

Home & Land Package

SA HOUSING CENTRE



\$483,894*

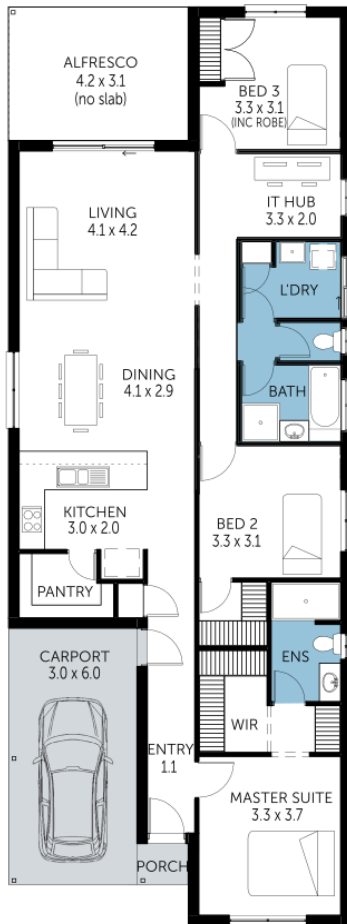
LOT 2005 KENNEDY AVENUE
HINDMARSH ISLAND

OREGON ALFRESCO

FACADE: Frontage Single Garage 16

3 2 2 1

BLOCK SIZE : 569M² HOUSE SIZE : 167M²



PACKAGE INCLUSIONS

- ✓ FIRST HOME BUYER OPPORTUNITY!
- ✓ Located in the beautiful Coorong Quays Estate
- ✓ \$10k off the build price included!
- ✓ 2.7 metre ceilings
- ✓ Ducted heating & cooling for year-round comfort
- ✓ Open plan kitchen with walk-in pantry
- ✓ Stainless steel appliances, including FREE dishwasher
- ✓ Carpets & timber laminate flooring
- ✓ Built in robes to bedrooms
- ✓ Ceramic basins & Kip chrome mixers
- ✓ Milan 1950 high shower screens
- ✓ Single garage with auto panel lift door
- ✓ Choice of front facade
- ✓ Modifications available for this floorplan
- ✓ Generous footings & siteworks allowance
- ✓ 25-year structural guarantee
- ✓ Contact Liane today: your Fleurieu Peninsula House & Land Expert!

Easy

ENQUIRIES: Liane Goldsmith M: 0408 280 055 E: lianeg@sahousingcentre.com.au

Visit us at sahousingcentre.com.au or call **1300 730 187**

*Conditions apply. Certain elevations may not match the particular floor plan published in this package and, as such, all floor plans and elevations are for illustration purposes only. Land subject to availability. The land referred to in this promotion is not owned by us. We make no representation and, to the extent permissible at law, we disclaim all liability, as to the suitability of the land to build on, or the suitability of any house design, or otherwise. You must satisfy yourself of that by inspection, or by taking professional advice, or otherwise. Pricing is indicative only and based on standard costings. Price may vary depending on selections, engineering, council and utility requirements and adjustments to allowances. All packages subject to final council approval. Alan Hickinbotham Pty Ltd ABN 13 007 567 222, RLA 230557. Construction Services Australia Pty Ltd ABN 99 007 641 787, Building Licence G8969.