

Live Happy

**Exciting
New Home
Designs**



Make yourself at home, sooner

**We think the path to home ownership should
be simple, seamless and super-affordable.**

**Whether you're stepping into your first place,
diving into property investment, or expanding
for a growing family - we'll work closely with
you to make your first home happen,
sooner rather than later.**

Lowest price guaranteed

We know that when it comes to building a home, you're laying more than just bricks and mortar. You're placing foundations for the kind of life you want to live.

We've collaborated with award winning architects Das Studio and other clever partners that care just as much as we do, and the result? A range of superior quality homes that look as good as they feel at the lowest price, guaranteed.

From 2700mm high ceilings, to instagram worthy kitchens featuring 900mm appliances, to the smartest everyday features to elevate your every day, we aim to make it easier to live happy.

★★★★★

**4.8 out
of 5 stars***

Your happiness is critical to ours. Our client reviews are consistently good and we like to keep it that way.



*Google Rating May 2024

**You're in
great company**





**We might be your first,
but you're not ours. We are proudly
part of SA's leading building and
development group. With over seven
decades of experience helping
thousands build the life of their
dreams, rest easy knowing you're
in the best hands to begin
building yours.**

Making space for great design

We're super excited to announce our collaboration with Adelaide based, husband and wife duo, Sara Horstmann and Dino Vrynios, the founders of award-winning architecture, interior design and landscape practice Das Studio — to make great design, even better.

Award-winning architect Dino and multi-talented designer Sara are a powerhouse team creating innovative spaces for modern living. Sara's expertise in interior and furniture design ensures a holistic approach, where every element seamlessly flows together. Dino, on the other hand, is an award-winning architect with an impressive collection of accolades including the prestigious Australian Institute of Architects National Emerging Architect Prize.

But accolades aside, it's their passion for architecture and its capacity to create a better world, that made Dino and Sara the perfect partners to re-imagine the potential of each of our designs.

Known for their ethos "make better" the Das Studio team have taken our best-selling homes and done just that—made them even better. With a knack for beautiful design and their second to none space optimisation skills, Das brought different ways of thinking and doing to the table, to ensure every inch of space is being used in the best possible way to live happier.

Creating new solutions to old problems, they have truly changed the game on our range of architecturally designed homes. With ten plans entirely designed by Das, and the rest of the range touched by their signature lens, every design pushes boundaries and goes beyond imaginations for a life well lived.



**Dino Vrynios and
Sara Horstmann
from Das Studio**



Designed for modern day living

We've brought in the big guns to make sure each inch of every home is super beautiful and supremely functional.

From free flowing, open-plan living areas to features with all the smarts, we know that great house design hinges on two things: smart use of space and flexibility to grow as you do. Our new range of homes includes designs by award winning, clever space gurus - Das Studio. The pair also collaborated with us to improve our best sellers.



The bees knees of inclusions

Affordable doesn't just mean the basics. Take a seat and a look at what we include.

Every home we build comes equipped with a list of features that are better-than-the-rest, right from the get-go. With 2700mm ceilings and 2340mm doors throughout, auto-remote panel-lift garage door, kitchens with 900mm appliances, master bedrooms to fit king-size beds, walk-in robes, a choice of inclusions that reflect your style and budget... and the list goes on. Safe as houses? You bet. We've even reinforced walls for safe and smooth TV installation. We mean it when we say, every detail has been considered from the ground up.



Express your best self

You only get one first home, so make it yours with the right style to match.

Take a cue from our dedicated selections team who will guide you and co-curate a space that speaks to your personality and personal taste. From the perfect bathroom tile to the latest designer tapware – with your vision and our eye for design, you are selections away from a home that is as unique and colourful as you are.



A home for all

From investors looking for low maintenance homes through to growing families seeking larger than life living, within our range there really is something for everyone (and every budget).

We understand ‘budget friendly’ means different things, to different people. While investors want to keep it low-key, young families want all the bells. So, we’ve worked closely with award winning duo, Dino Vrynios and Sara Horstmann from Das Studio, along with the best engineers and suppliers to develop a range of quality homes that give you the freedom to choose. A little luxury, or a lot? Let your budget decide.

Ask us about
our schemes
by top interior
designers and
stylists



Design schemes by leading interior designers and stylists

At SA Housing Centre, things just got even sweeter. We've partnered with some of SA's top interior designers and stylists, to create stunning design schemes to make your life even easier.

Our curated schemes have everything you need, from bricks to paint colours and flooring to tapware.

Forget the design stress! Just choose the scheme that speaks to your style, and voila – instant dream home!

Simple and easy. Just 3 steps!

From sorting finance, to finding the perfect block and choosing a dream design from our extensive range, our team will guide you every step of the way. With us in your corner, the path to home ownership is easier and more achievable than you think.

Finance



Step 1: Sort your finance

We get it. Navigating the world of finance can be overwhelming. But we'll take away all the confusing industry speak and get you finance literally in no time. Plus, with KeyStart Finance we can help you access government grants and flexible, low-finance options exclusive to us, moving you one step closer to the home of your dreams.



Land

Step 2: Secure your land

We have long standing partnerships with some of the state's leading land developers so now you can have the best house, and the best street. Schools, parks, shops and transport – we'll help you source a block that's surrounded by everything you could possibly need.

Home



Step 3: Bring your dream home to life

Once we've sorted your finance and secured your land, the fun can really begin. Our team will walk you through our extensive range of clever architecturally designed homes, suited to your budget and the lifestyle you want.



**We've got
your back**



It's not lost on us how overwhelming the path to home ownership can be. And it's the little things that make the most difference when it comes to the best of the best, customer service. Here's how we keep the standards high.

Stay in the loop

We keep the lines of communication open with regular updates all throughout the construction of your new home. The more you know, the less you worry so we'll keep you informed of what is happening and when, every step of the way.

We care what you think

Your satisfaction is our number one priority, so when you speak — we take the time to listen. So much so, that we regularly welcome feedback to make sure we are going above and beyond, from the first step to the last.

We don't budge on quality

We build every single home as if it was our own. Using the very best selection of market-leading quality materials, reliable, hardworking tradespeople, the highest quality control inspections and meticulous building supervision.

We care about your future

When it comes to energy efficiency our range has been designed to be more energy efficient than the current standards. The range is also cleverly designed so you and your family can age in-place. For example every home features an innovative bathroom or ensuite layout to enable wheelchair access.

We're here for a good time, and a long time

We are so confident in the quality of our builds; we offer a 25 year structural guarantee and a 3 month warranty to make sure the goodness lives on, long after the house warming.

SA HOUSING CENTRE

Reinventing home ownership

Keystart Finance

With us in your corner, you won't need a degree in finance to get into the housing market. We have our very own in-house finance team who will guide you through the entire journey

Market Leading Brands and Inclusions

Although we offer super - affordable home designs, we won't compromise on quality. Every single SAHC home comes equipped with the crème de la crème of quality brands and inclusions.

3 Month Maintenance Program

New houses sometimes take a minute to settle into their skin. So to cover any niggles that might pop up, we invite you to fill out a maintenance report at the 3 month mark. If you have any concerns? We'll take care of them for you.

25 Year Structural Guarantee

Our homes are built to last generations, and we are so confident of that we back each one with a 25-year structural guarantee. Safe as houses? Absolutely.



It's not just about the destination, the journey counts too

MEET WITH YOUR NEW HOME CONSULTANT



COMPLETE YOUR FINANCE HEALTH CHECK

FINALISE YOUR HOME SELECTION



SIGN CONTRACT AND PAY DEPOSIT

(Pre-Construction)

MASTERPLANS AND CONSTRUCTION FOOTING REPORT

READY TO SEE YOUR PROGRESS TAKE SHAPE? EXPLORE OUR ONLINE PORTAL

FILE ACCEPTANCE

SELECT FITTINGS AND FIXTURES WITH OUR STYLE TEAM



BANK PACK

BUILDING APPROVALS

FINANCE APPROVAL

LAND SETTLEMENT

SA HOUSING CENTRE



Your satisfaction is our top priority, so we will check in along the way to make sure you're smiling every step. Where you see this blue dot, we'll ask you to share your thoughts with a quick 5-minute survey.





Layers of luxury

Our inclusions are designed to meet you exactly where you are, with what luxe means to you.

From first homeowners looking to get into the market, to larger families who would like a place to grow — one thing that remains the same is our commitment to quality.

We have 3 levels of inclusions to cater for every budget, all with the same level of quality. Dial up the luxe as much or as little as you like.



Level 1

Featuring everything you need to get started, Level 1 is an entry level to rival most. This is the perfect base canvas and includes all the features necessary to start building the space of your dreams.

- Lofty 2700mm high ceilings and 2340mm doors
- Designer kitchen splashback tiles including mosaics
- Westinghouse 900mm kitchen appliances
- Stainless steel dishwasher
- Bathroom and ensuites include tiled ledges in showers, semi-framed shower screens, designer sanitaryware, tapware and bathroom accessories
- Clipsal Iconic light switches, television points, data points and double power points
- Walk-in robes with double shelf, hanging rail and drawers
- Remote controlled garage doors
- Plus so much more



Level 2

Level 2 is sitting pretty in the middle, with the same impressive, standard inclusions as Level 1, but with a few extra additions.

- Impressive kitchens with stunning 20mm solid surface benchtops, undermount kitchen sink and upgraded tapware
- Full height tiling in bathrooms and ensuites with 1200mm high tiling to separate WC/vanities
- Carpets to bedrooms, study and home theatres
- Timber-style flooring to front entry, rear hallway, family, kitchen and meals
- Laundries, store rooms, and mud rooms with joinery included
- Ducted reverse cycle air-conditioning with wi-fi controller
- Security screen doors
- Plus much more



Level 3

If it's luxury you're seeking, Level 3 includes everything from Level 1 and 2. Plus in addition, there's cutting edge specifications and exclusive features for the ultimate in contemporary home design.

- Stunning 20mm solid surface benchtops with slab ends to the island benchtop
- 609L French door refrigerator
- Luxe bathrooms and ensuites with designer pill shaped mirrors, feature mosaic wall tiles, semi-frameless shower screens and upgraded tapware and bathroom accessories
- Solid surface benchtops to ensuites and bathrooms
- Downlights throughout
- Integrated smart home technology such as a central tablet to control heating and cooling, video doorbell and garage door. Security system, NBN ready provisions, Google Nest Hub Max and Nest Wi-Fi, all providing unparalleled connectivity and security.
- Paved driveways and paths
- Plus much more

Our Designs

It's the quieter details that make the most difference when it comes to exceptional design. So, we've collaborated with the clever team at Das Studio to create an affordable range of artfully designed homes. With equal bearing for form and functionality, generous inclusions and impressive features as a standard, we've developed a beautiful range of super-affordable homes, that look as good as they feel.

**Designed for
9m+ wide blocks**

Alabaster 3.5 30

Alabaster 5 31

Indigo 3.5 32

Indigo 5 33

Ivory 3.5 34

Ivory 5 35

Onyx 3.5 36

Onyx 5 37

Pewter 3.5 38

Pewter 5 39

Sage 3.5 40

Sage 5 41

**Designed for
12.5m+ wide blocks**

Burgundy 3.5 44

Burgundy 5 45

Cobalt 3.5 46

Cobalt 5 47

Coral 3.5 48

Coral 5 49

Marigold 3.5 50

Marigold 5 51

Tangerine 3.5 52

Tangerine 5 53

Teal 3.5 54

Teal 5 55

Turquoise 3.5 56

Turquoise 5 57

Violet 3.5 58

Violet 5 59

**Designed for
14m+ wide blocks**

Cerulean 3.5 62

Cerulean 5 63

Cyan 3.5 64

Cyan 5 65

Mahogany 3.5 66

Mahogany 5 67

Scarlet 3.5 68

Scarlet 5 69

Sepia 3.5 70

Sepia 5 72

**Designed for
16m+ wide blocks**

Amber 3.5 74

Amber 5 75

Ebony 3.5 76

Ebony 5 77

Emerald 3.5 78

Emerald 5 79

Fuchsia 3.5 80

Fuchsia 5 81

Magenta 3.5 82

Magenta 5 83

DESIGNED FOR

9m+ wide blocks

Cleverly designed for modern, low-maintenance living, discover the freedom of our carefully considered, compact home designs. Delight in spacious, free-flowing layouts - perfectly suited for first home buyers, investors and empty nesters looking for smart design features.



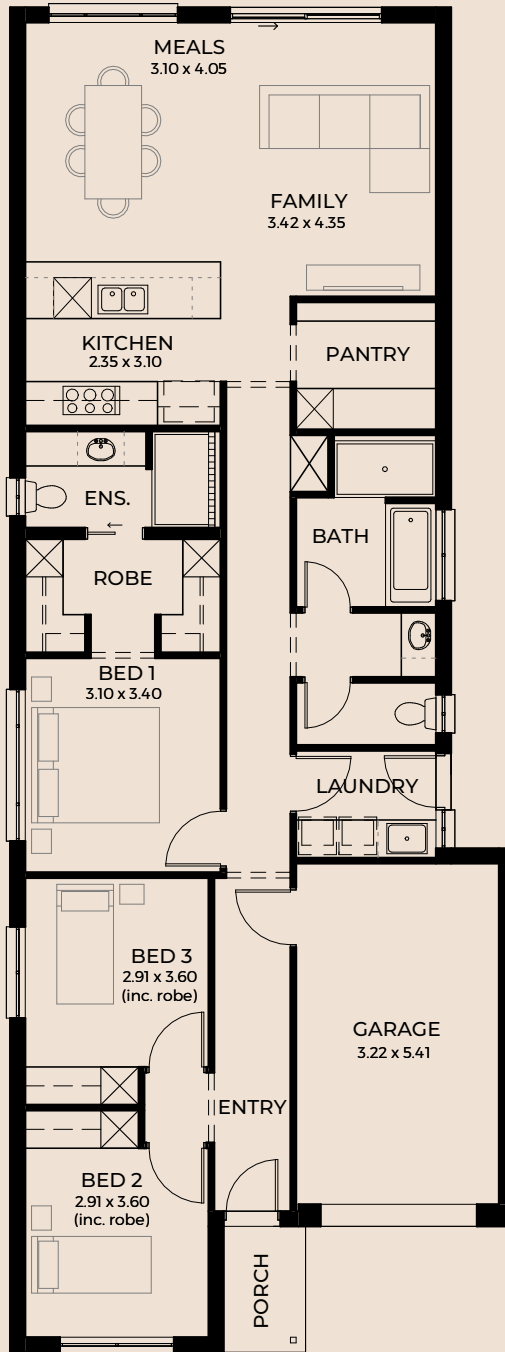


Alabaster 3.5

 3  1  2  1 SETBACK 3.5m

Width	8.00m
Depth	21.35m
Living	128.03m ²
Porch	2.60m ²
Garage	20.20m ²
Total	150.83m ²

Compact but carefully considered, the Alabaster offers three bedrooms, with a generous ensuite and walk in robe. Light, bright, and airy living awaits in this thoughtfully designed space.

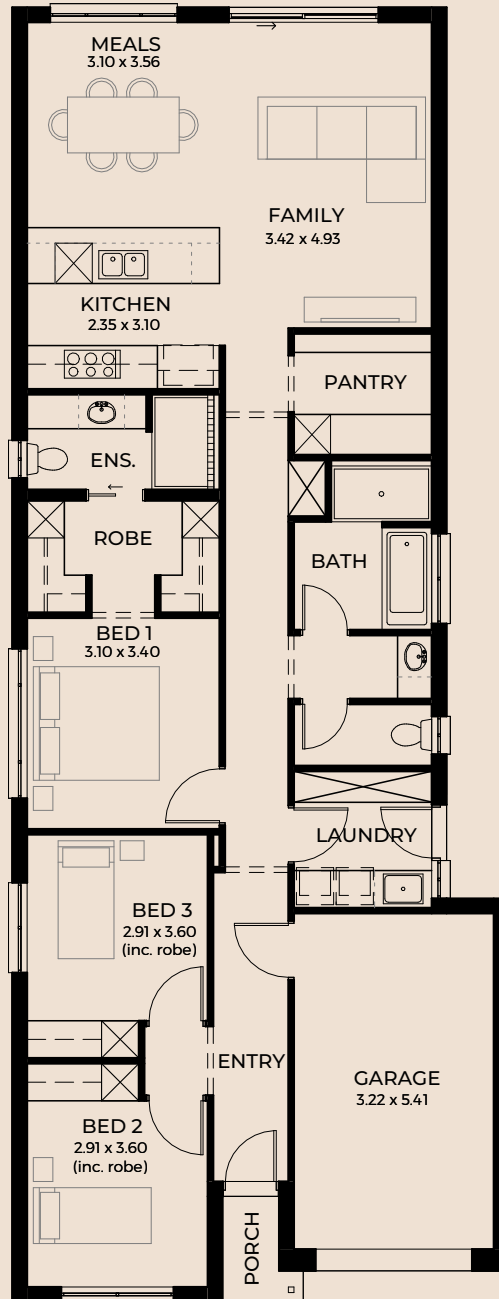


Alabaster 5

 3  1  2  1 SETBACK 5m

Width	8.00m
Depth	20.86m
Living	128.61m ²
Porch	1.74m ²
Garage	20.52m ²
Total	150.87m ²

Discover freedom and functionality, with ample storage in each bedroom to keep life in order, the Alabaster has been considerably designed to maximise the light and space in every single corner.

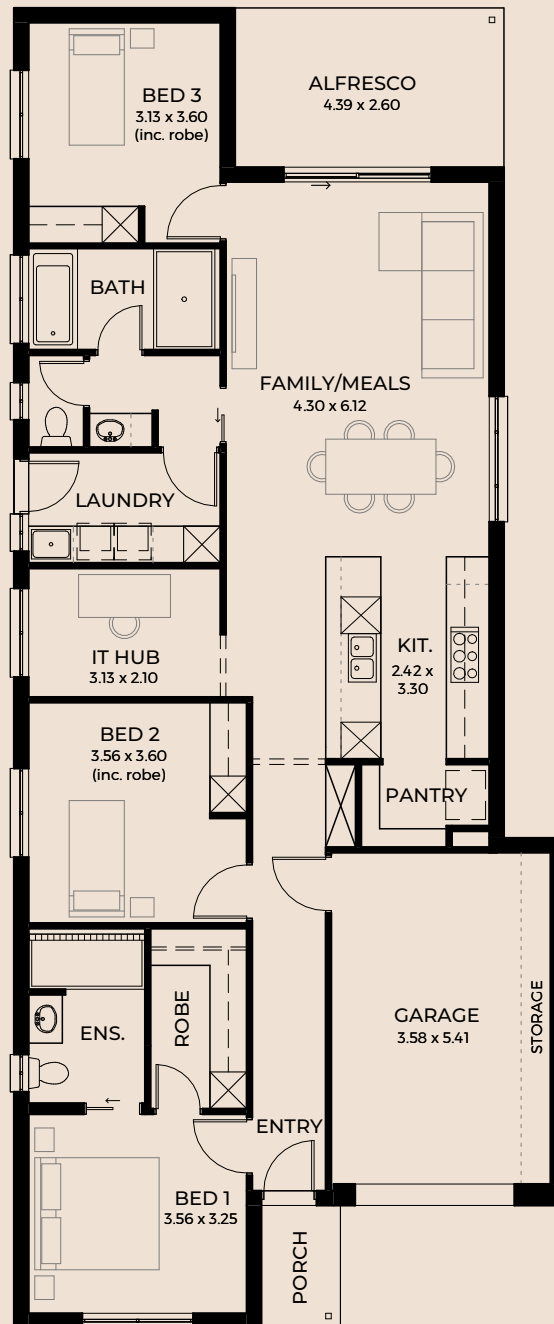


Indigo 3.5

 3
  1
  2
  1
 SETBACK 3.5m

Width	9.00m
Depth	21.55m
Living	136.79m ²
Alfresco	11.41m ²
Porch	2.58m ²
Garage	22.27m ²
Total	173.05m ²

Come home to better modern living, neatly packaged in a clever, compact design. Enjoy the flow of a spacious master suite, and ease of living with a luxurious three-way bathroom.

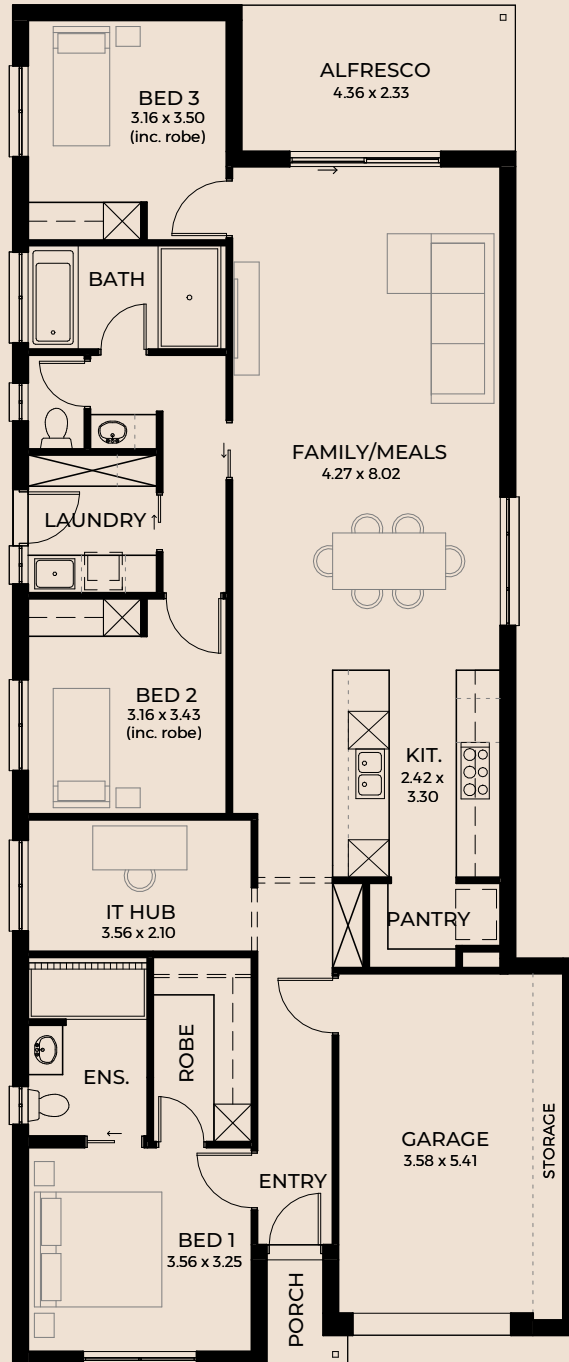


Indigo 5

 3
  1
  2
  1
 SETBACK 5m

Width	9.00m
Depth	21.68m
Living	143.63m ²
Alfresco	10.16m ²
Porch	1.73m ²
Garage	22.59m ²
Total	178.11m ²

Experience comfort in every corner of the Indigo. Step out for a warm breakfast, sunny side up in the undercover alfresco area or host the ultimate game night in your very own activities room.

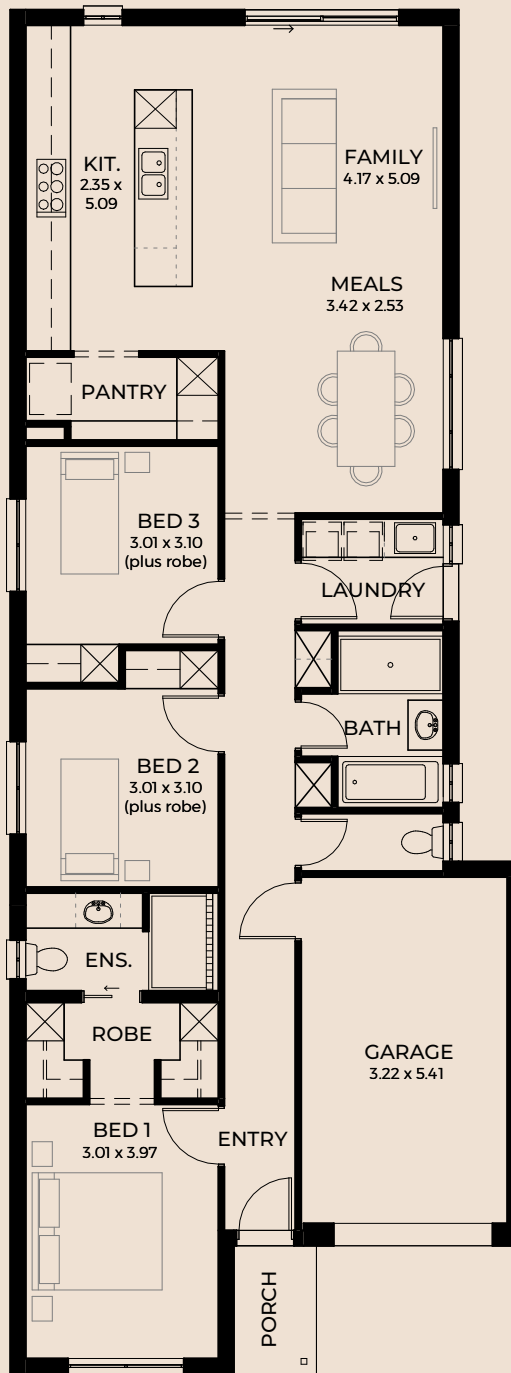


Ivory 3.5

 3  1  2  1 SETBACK 3.5m

Width	8.00m
Depth	21.30m
Living	127.86m ²
Porch	2.60m ²
Garage	20.20m ²
Total	150.66m ²

A real modern marvel, with a spacious master suite and contemporary kitchen design, the Ivory' offers all the compact yet clever luxuries you could ever hope for.

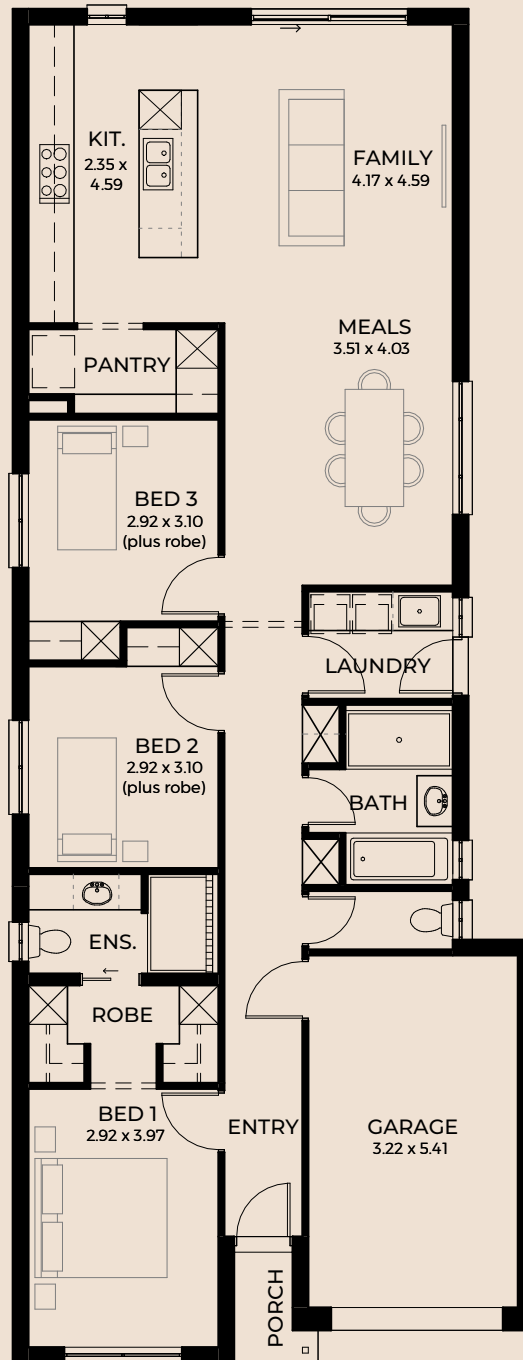


Ivory 5

 3  1  2  1 SETBACK 5m

Width	8.00m
Depth	20.80m
Living	128.20m ²
Porch	1.73m ²
Garage	20.52m ²
Total	150.45m ²

Designed with impressive features, this small but mighty home includes sleek kitchen design and a walk-in pantry, perfect for storing the late-night snacks.

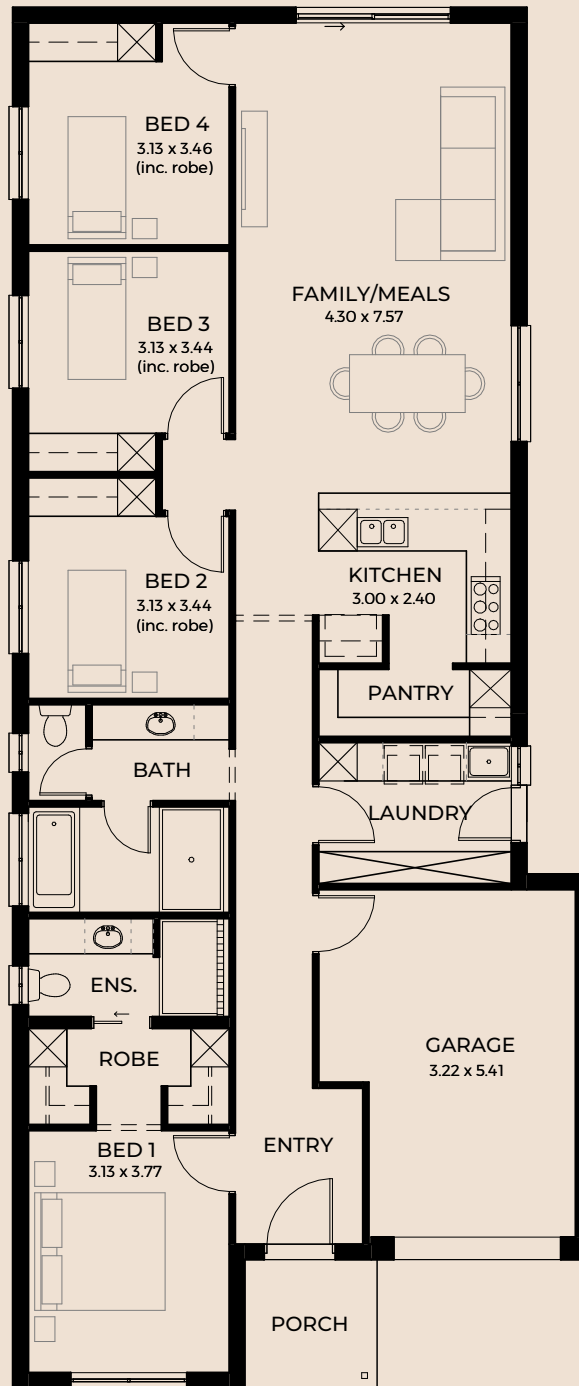


Onyx 3.5

 4  1  2  1 SETBACK 3.5m

Width	9.00m
Depth	21.49m
Living	146.60m ²
Porch	4.12m ²
Garage	22.54m ²
Total	173.26m ²

The Onyx is comfort and style in spades, with a well-equipped kitchen and walk-in pantry plus a super-sized laundry to cater for even the deepest washing baskets.

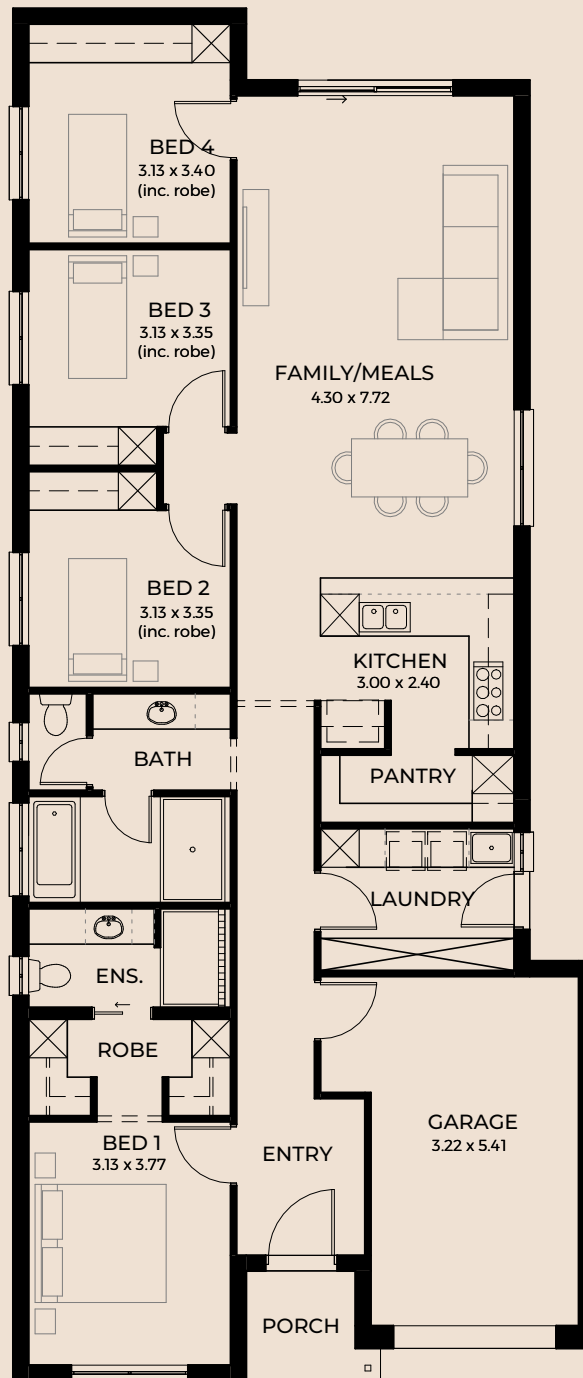


Onyx 5

 4  1  2  1 SETBACK 5m

Width	9.00m
Depth	21.25m
Living	144.98m ²
Porch	3.07m ²
Garage	21.92m ²
Total	169.97m ²

Step into liveable luxury with a master suite fit for a queen. The Onyx features four spacious bedrooms and the promise of a life well lived, growing as you do.

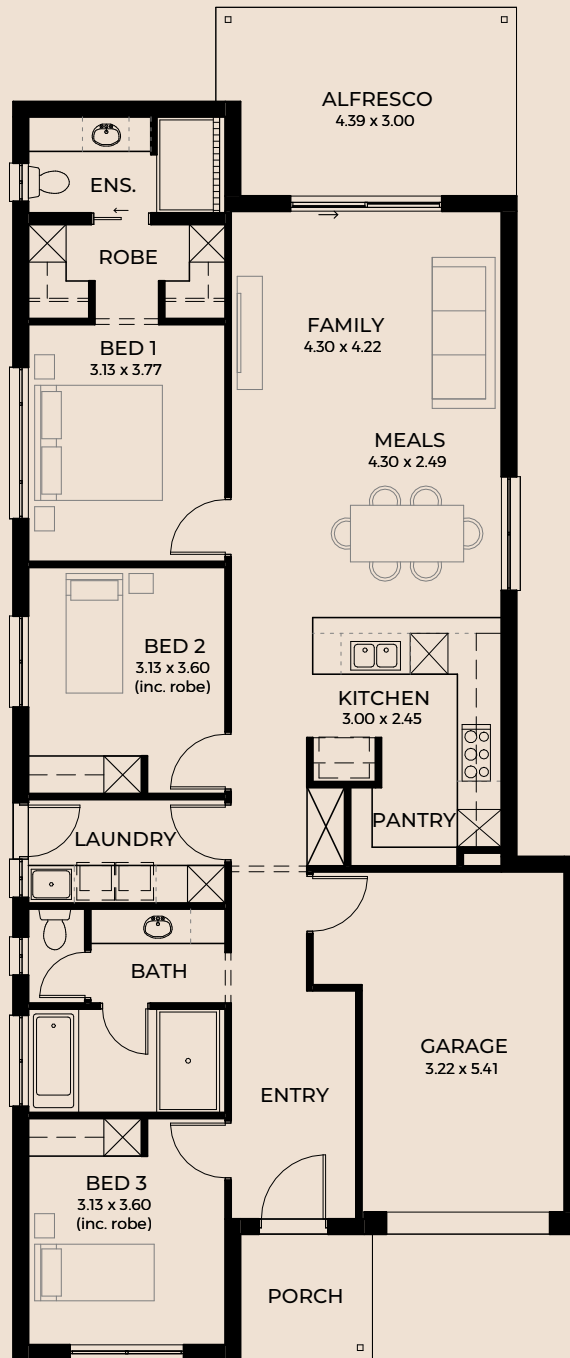


Pewter 3.5

 3  1  2  1 SETBACK 3.5m

Width	9.00m
Depth	21.50m
Living	129.03m ²
Alfresco	13.75m ²
Porch	4.20m ²
Garage	21.60m ²
Total	168.58m ²

Perfectly proportioned for first home buyers or anyone on the hunt for low maintenance living, the Pewter features a generous master suite you'll love coming home to.

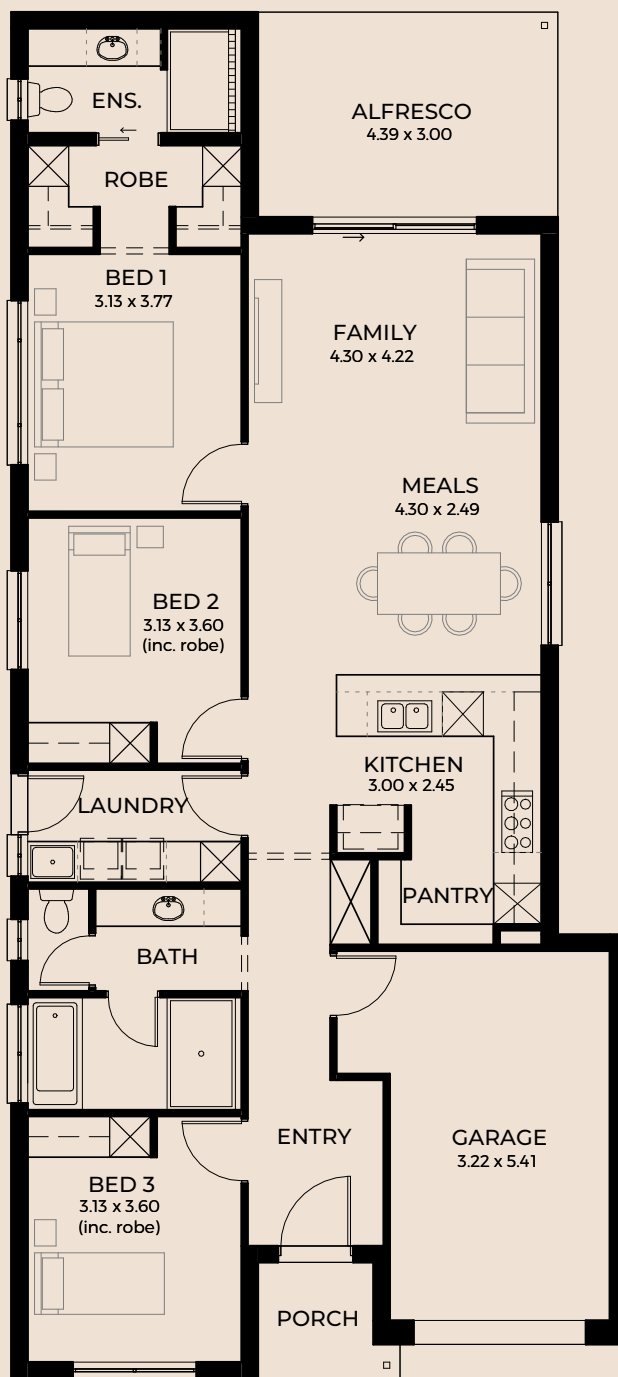


Pewter 5



 3
  1
  2
  1
 SETBACK 5m

Width	9.00m
Depth	20.00m
Living	126.69m ²
Alfresco	13.17m ²
Porch	3.07m ²
Garage	21.92m ²
Total	164.85m ²

Spend less time maintaining your home and more time living in it with this beautifully contemporary home, designed for an easy breezy lifestyle.

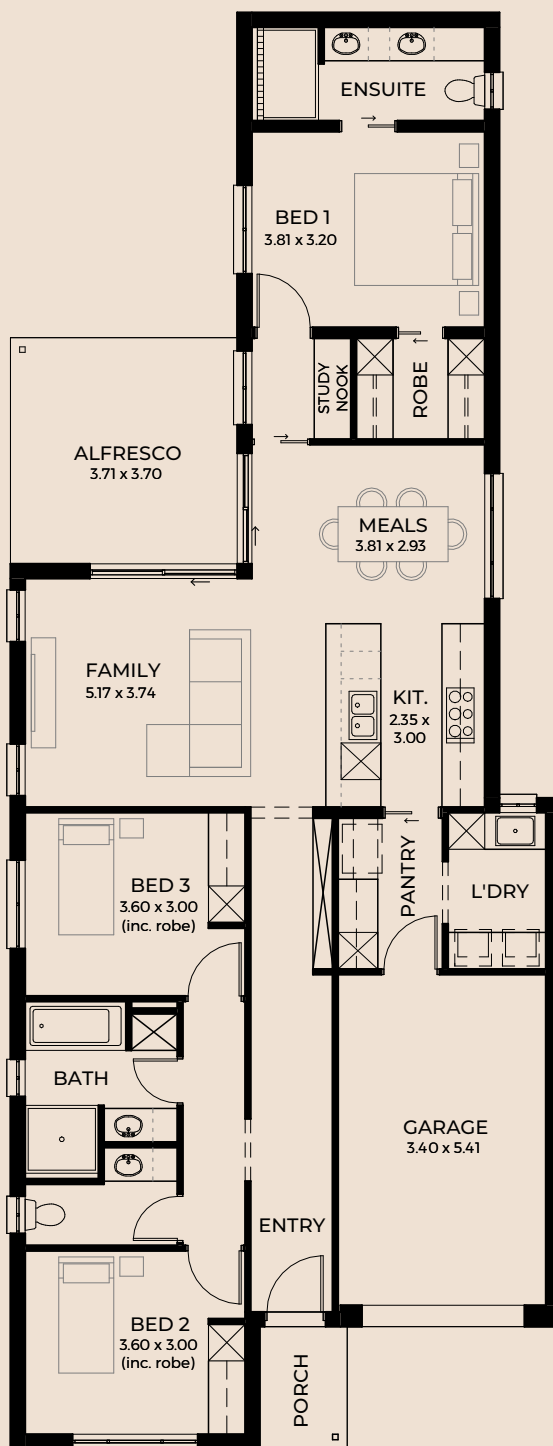


Sage 3.5

 3
  1
  2
  1
 SETBACK 3.5m

Width	9.00m
Depth	23.50m
Living	134.38m ²
Alfresco	13.73m ²
Porch	2.86m ²
Garage	20.97m ²
Total	171.94m ²

The Sage, cleverly designed by Das Studio features a master suite intentionally set away from the street for an easy night's sleep. Wake up to nature with dreamy garden views and a perfectly positioned study nook, to find the ultimate work-life balance.

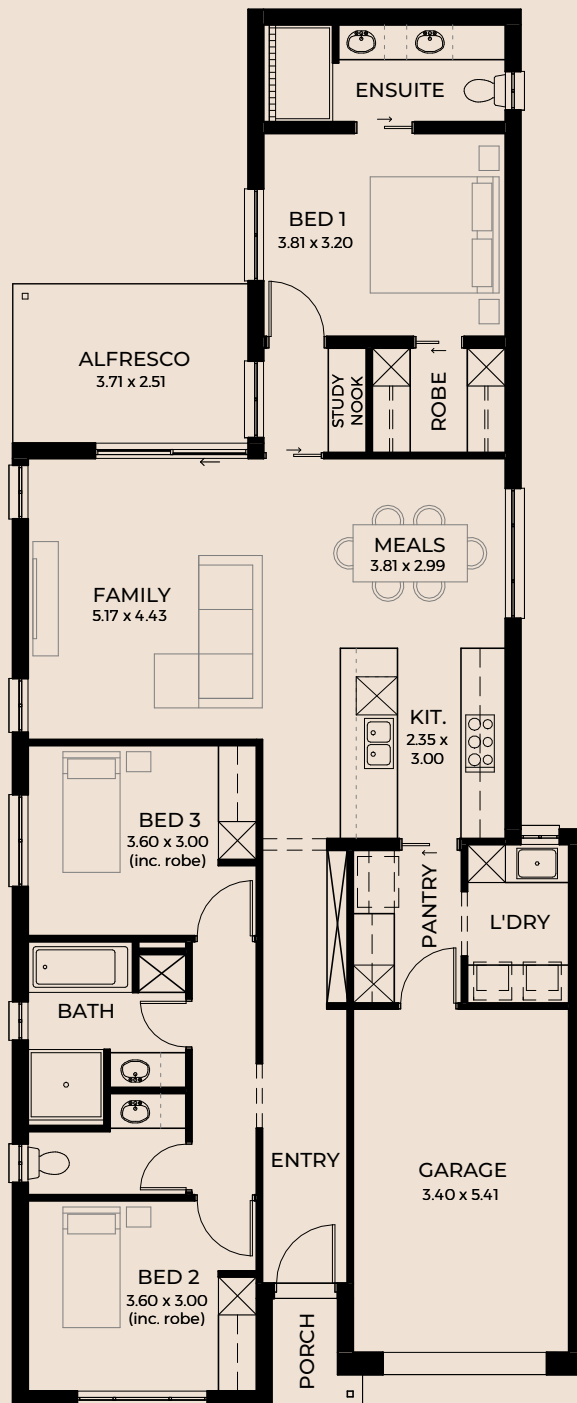


Sage 5

 3  1  2  1 SETBACK 5m

Width	9.00m
Depth	22.00m
Living	134.76m ²
Alfresco	9.31m ²
Porch	1.96m ²
Garage	21.28m ²
Total	167.31m ²

Crafted by Das Studio, no space is wasted in our Sage design. With a thoughtfully placed layout, and undercover alfresco for seamless indoor-outdoor transitions, designed the way you love to live.



DESIGNED FOR

12.5m+ wide blocks

Enjoy the perfect blend of low maintenance living and smart designs, flexible enough to grow and evolve as you do. These superbly spacious homes include a walk-through robe plus home theatre or a fun room to play. Step out of your butler's pantry and into a generous kitchen, rich with bench space to prepare a delicious meal for old friends. It's living made simple, just the way you like it.



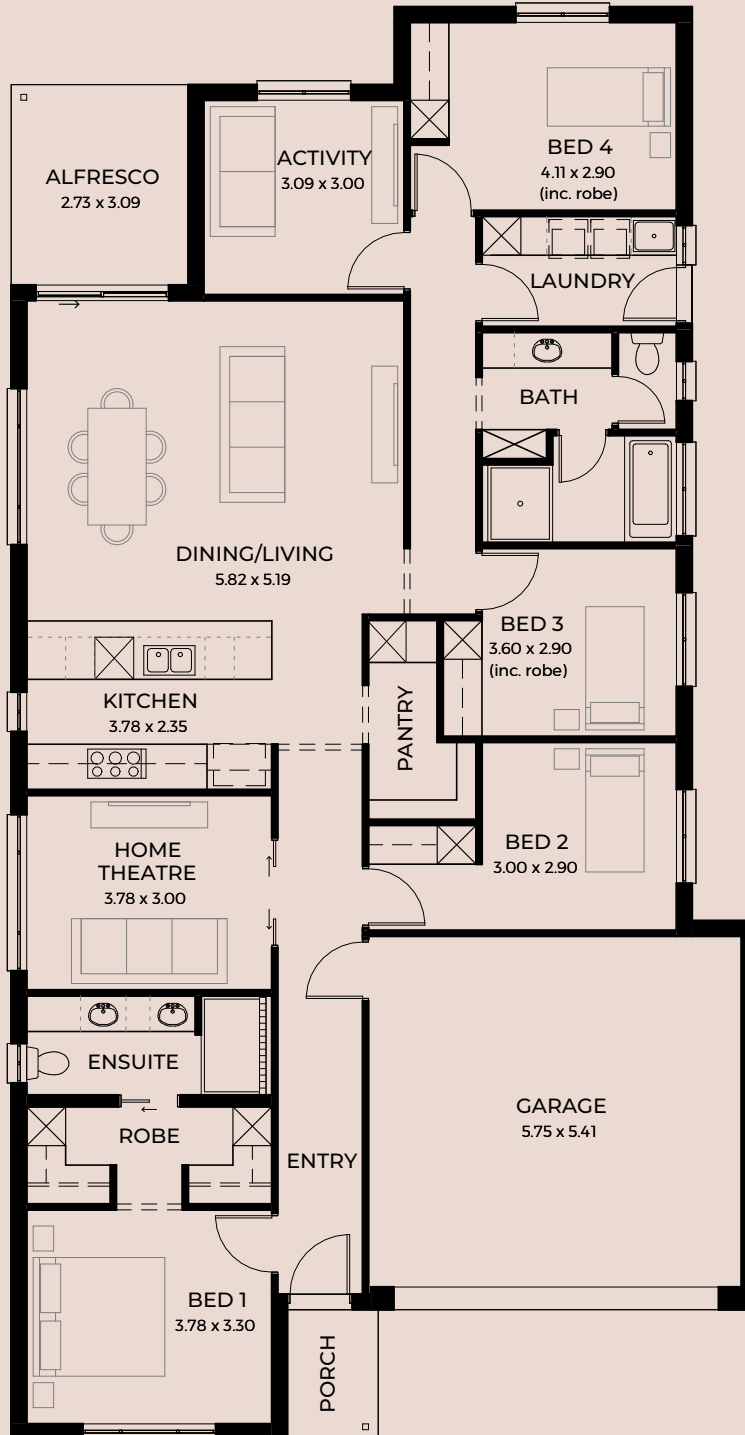


Burgundy 3.5

 4  3  2  2 SETBACK 3.5m

Width	11.50m
Depth	22.09m
Living	175.17m ²
Alfresco	8.44m ²
Porch	2.80m ²
Garage	34.77m ²
Total	221.18m ²

Step into relaxed living with the Burgundy. Featuring a separate home theatre and four generous bedrooms, you'll enjoy the comfort of space in every corner.

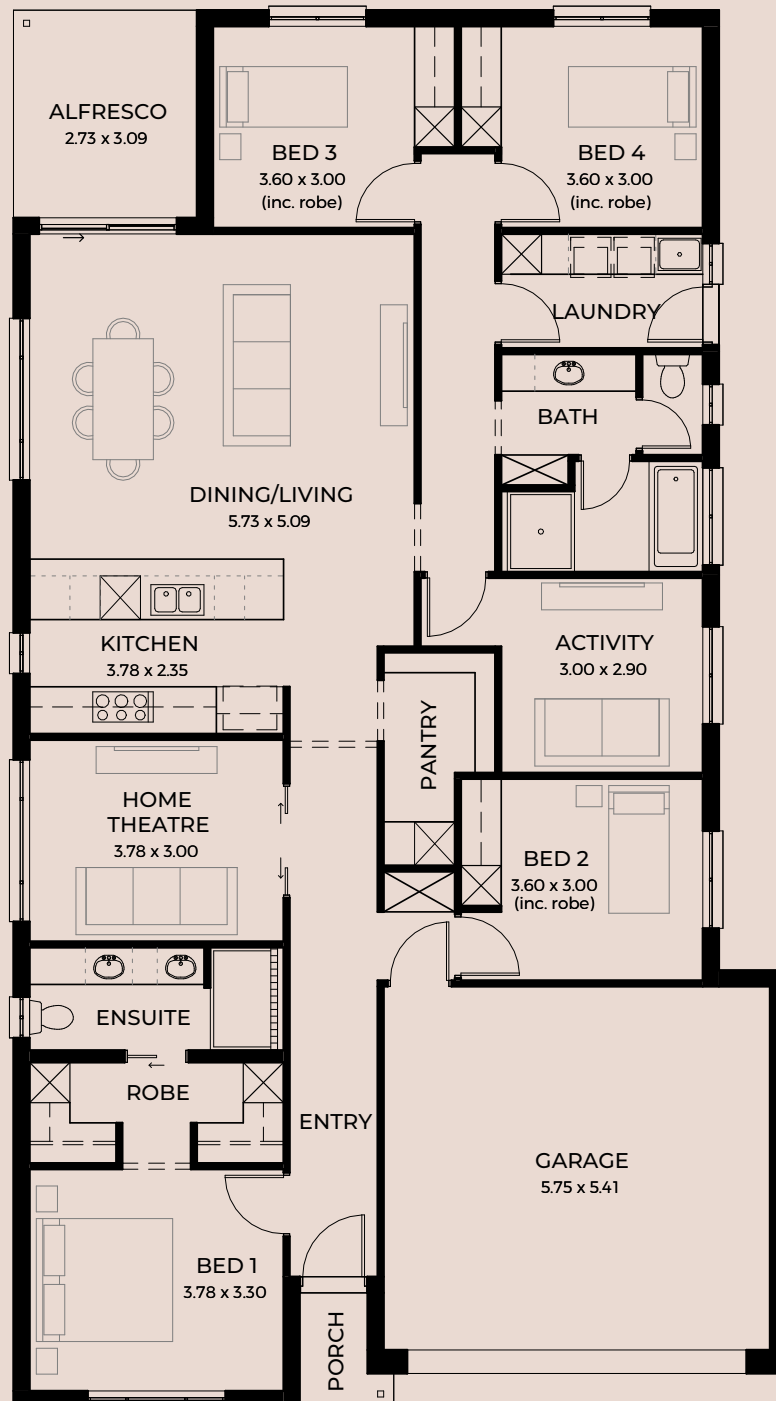


Burgundy 5


 4
  3
  2
  2
 SETBACK 5m

Width	11.50m
Depth	20.79m
Living	176.44m ²
Alfresco	8.44m ²
Porch	1.91m ²
Garage	35.09m ²
Total	221.88m²

Burgundy is equal parts handsome and homey featuring large 'his and hers' robes, a delightful living space and separate activity room perfect for the growing needs of a young family.



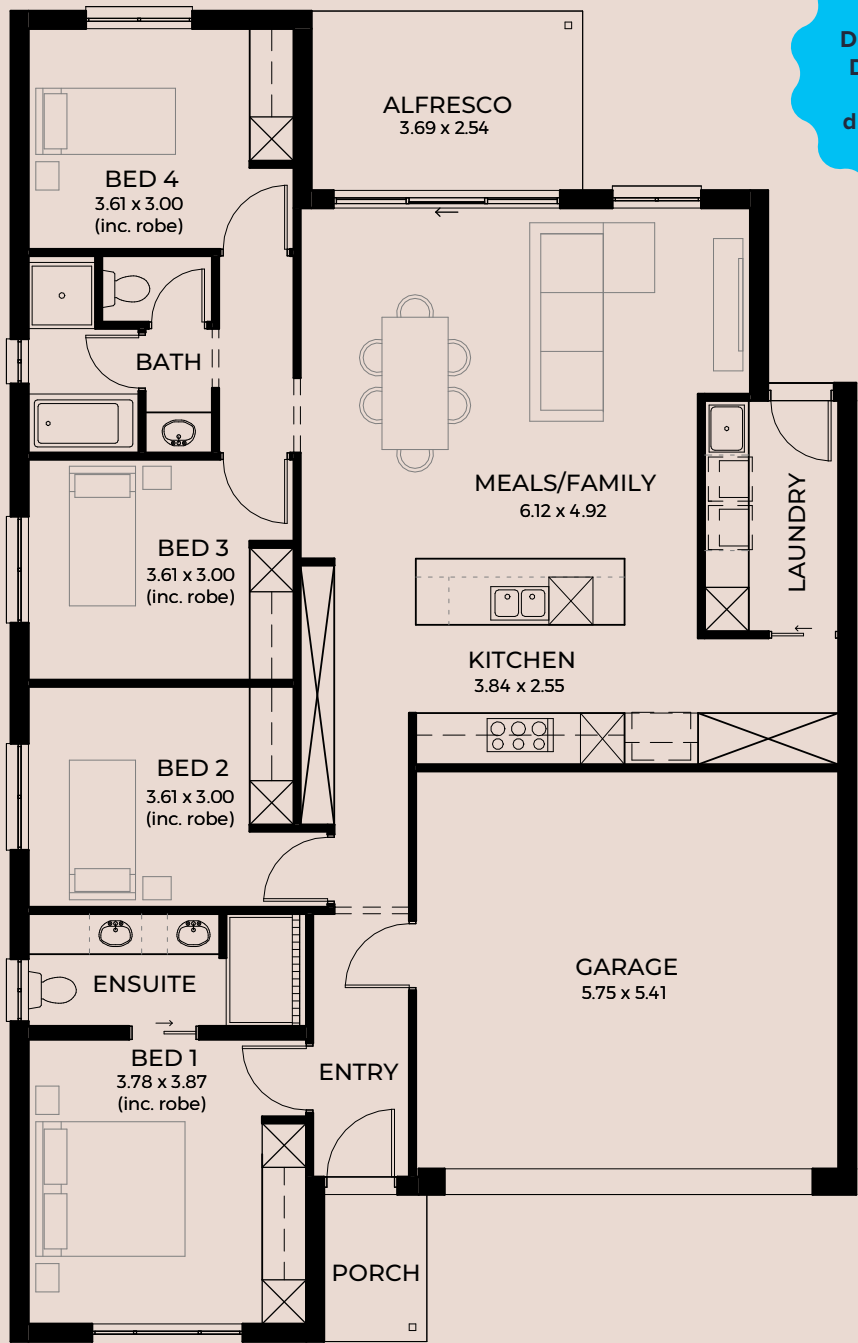
Cobalt 3.5

 4
  1
  2
  2
 SETBACK 3.5m

Width	11.50m
Depth	18.10m
Living	137.32m ²
Alfresco	9.37m ²
Porch	2.80m ²
Garage	34.50m ²
Total	183.99m ²

Das Studio intended the Cobalt to be as clever as it is convenient, with four generous bedrooms and an intuitively designed kitchen and laundry close by for easy accessibility.

Designed by Das Studio for 25m deep blocks



Cobalt 5

 4
  1
  2
  2
 SETBACK 5m


Width	11.50m
Depth	18.20m
Living	136.57m ²
Alfresco	9.37m ²
Porch	1.91m ²
Garage	34.82m ²
Total	182.67m ²

The Cobalt by Das Studio creates an oasis of simplicity and ease with clever features intended to make you feel the comfort and convenience in every corner.

Designed by
Das Studio
for 27m
deep blocks

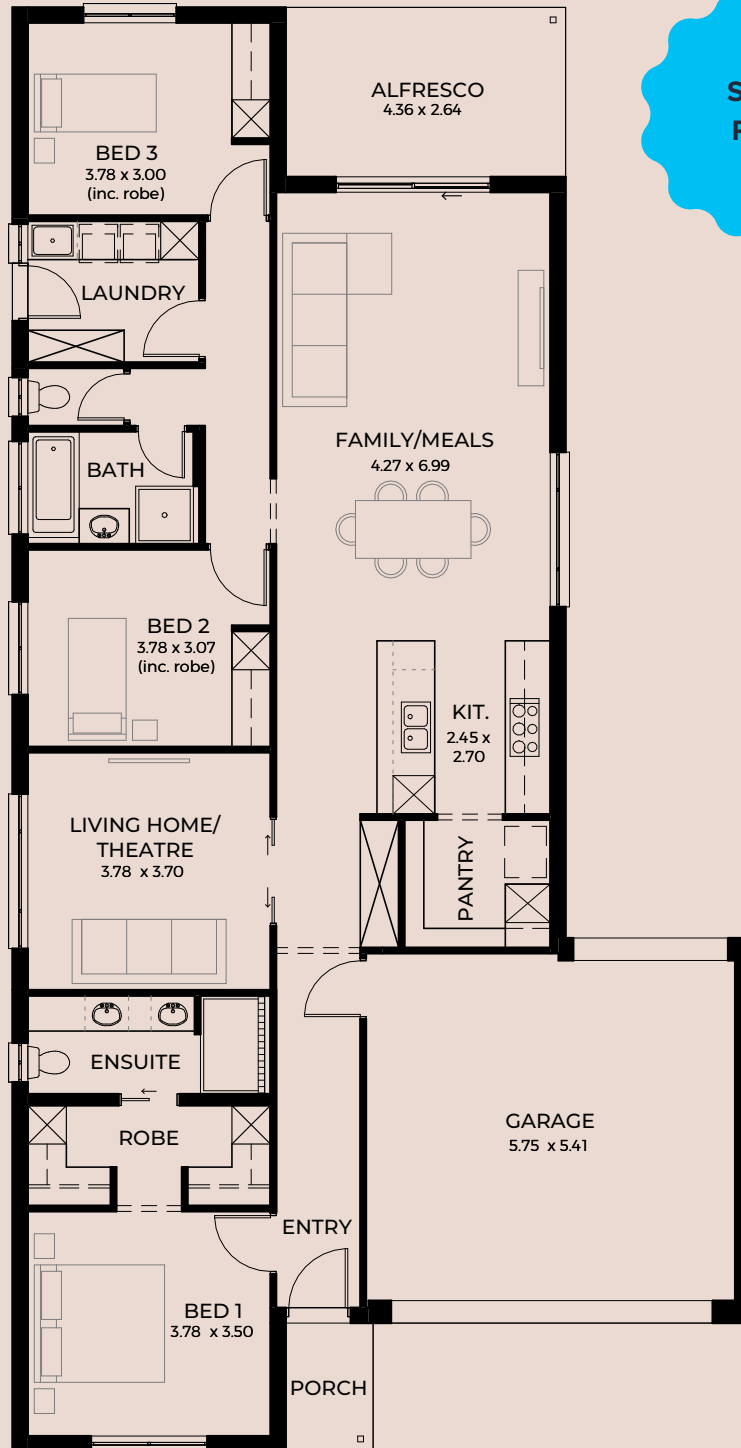


Coral 3.5

 3
  2
  2
  2
 SETBACK 3.5m

Width 11.50m
Depth 22.50m
Living 155.78m²
Alfresco 11.51m²
Porch 2.72m²
Garage 35.22m²
Total 205.23m²

Step into the Coral's spacious pantry, undercover alfresco, and indulgent master robe with plenty of storage, this is a home designed to grow as you do.

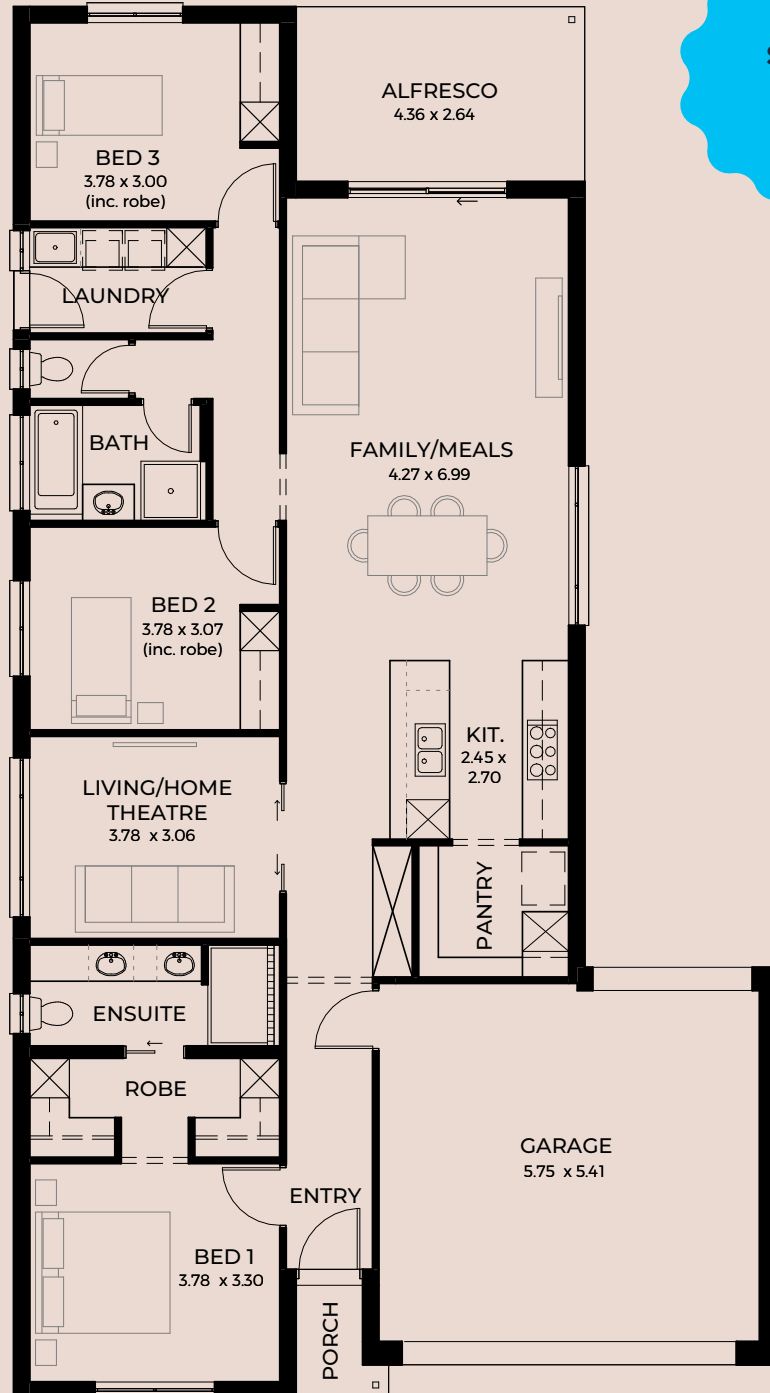


Coral 5



 3
  2
  2
  2
 SETBACK 5m

Width	11.50m
Depth	21.00m
Living	147.86m ²
Alfresco	11.51m ²
Porch	1.91m ²
Garage	35.54m ²
Total	196.82m ²

Clean lines are the bread and butter of any great home and the Coral packs a design punch. With an inviting living room to anchor contemporary living at its finest, you'll love coming home to the Coral.

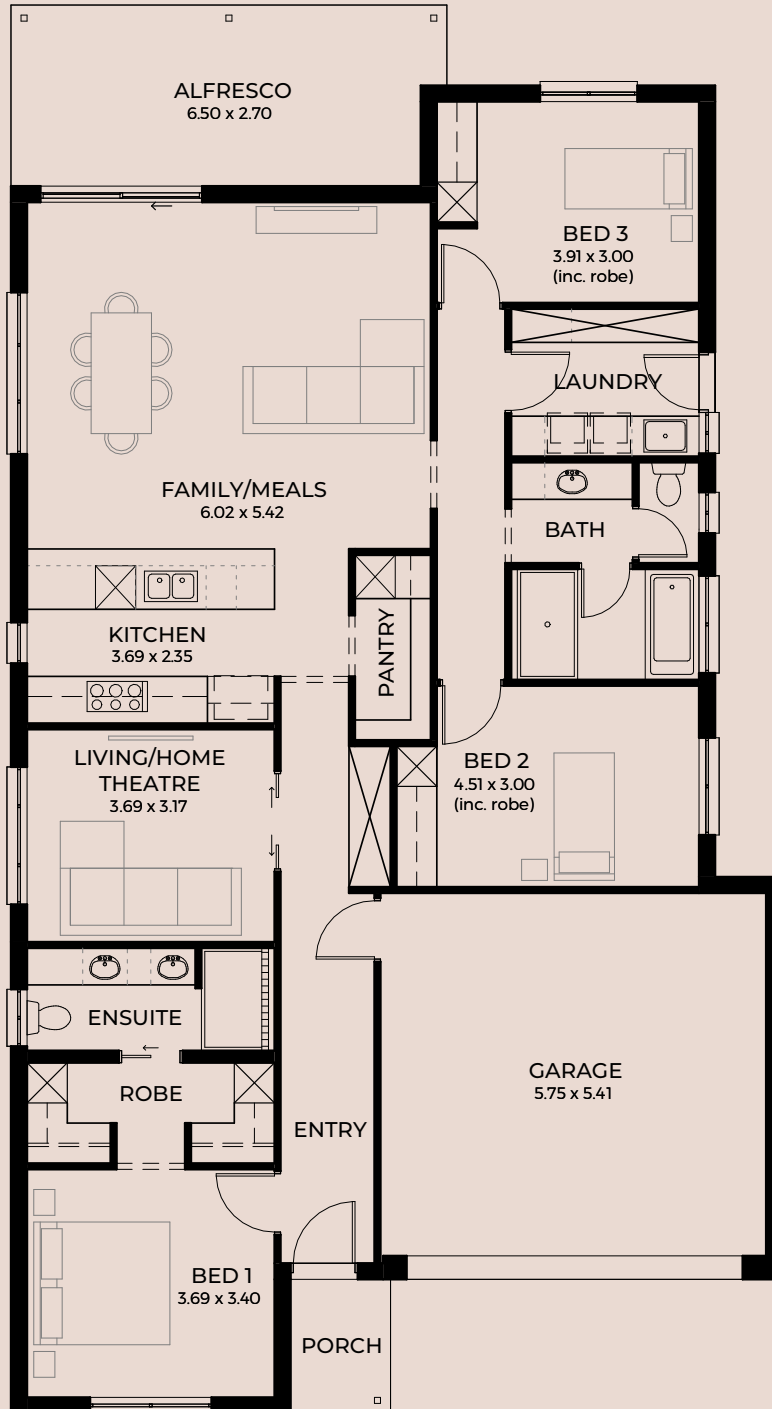


Marigold 3.5

 3
  2
  2
  2
 SETBACK 3.5m

Width	11.50m
Depth	21.00m
Living	157.30m ²
Alfresco	16.97m ²
Porch	2.98m ²
Garage	34.77m ²
Total	212.02m ²

Discover the perfect blend of comfort and functionality in the Marigold. With a large undercover alfresco and spacious walk-in pantry, it's the place for modern living.

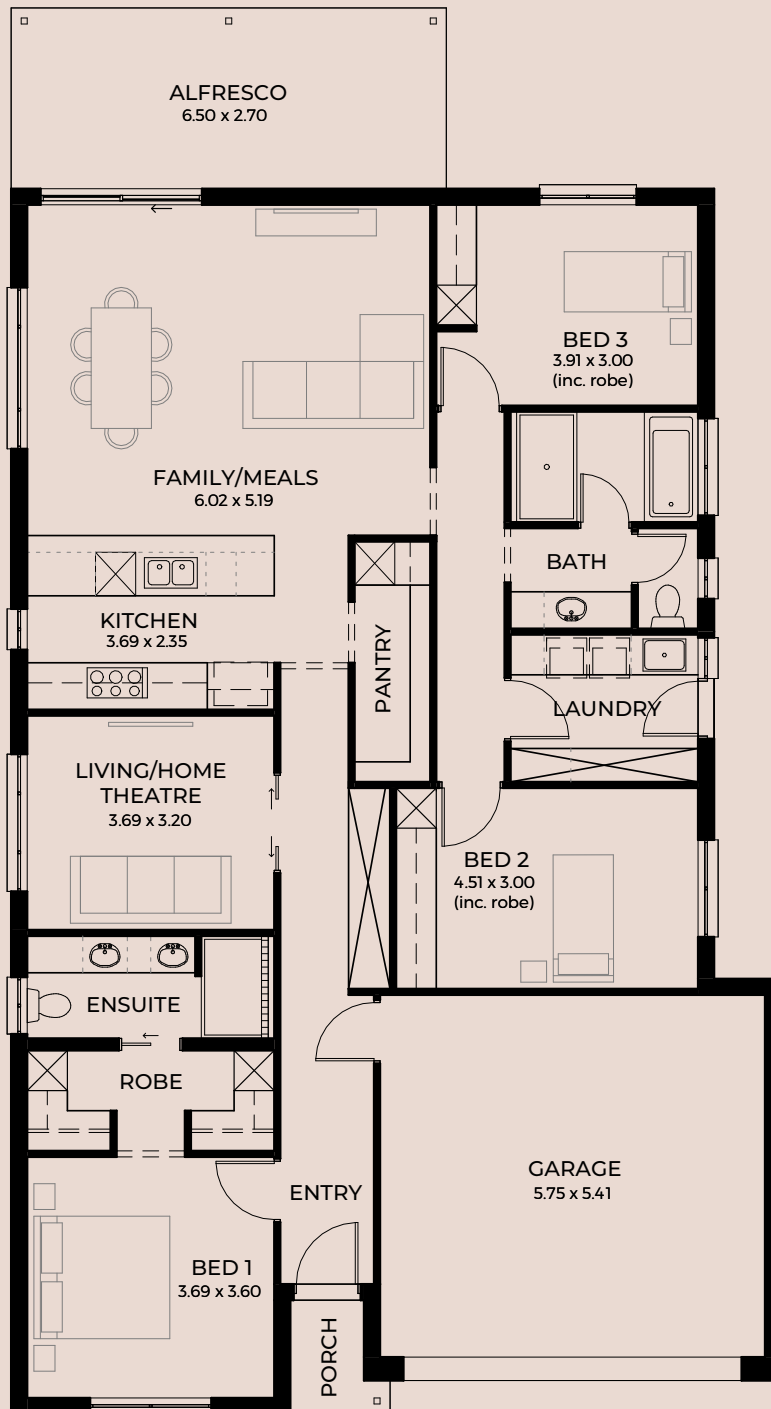


Marigold 5

 3
  2
  2
  2
 SETBACK 5m

Width	11.50m
Depth	21.00m
Living	158.58m ²
Alfresco	17.55m ²
Porch	2.07m ²
Garage	35.09m ²
Total	213.29m ²

The Marigold's clever design is ideal for first home buyers or discerning empty nesters, with a separate living area and home theatre encouraging informal living that is as refined as it is comfortable.



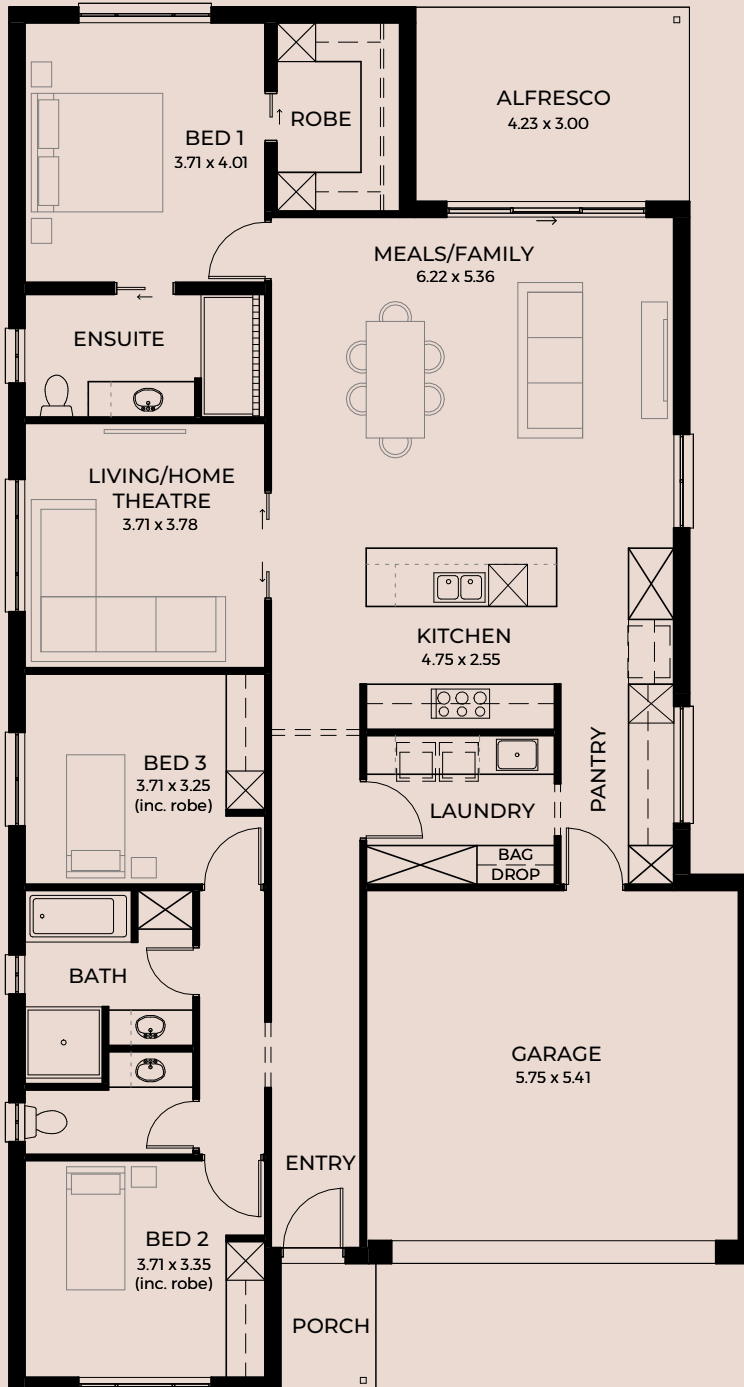
Tangerine 3.5

 3  2  2  2 SETBACK 3.5m

Width 11.50m
Depth 21.39m
Living 170.51m²
Alfresco 12.69m²
Porch 2.94m²
Garage 34.77m²
Total 220.91m²

If you love a movie night in, the Tangerine is yet another clever Das Studio design with a separate home theatre room to please the biggest family of film buffs. All the space you could ever want to stretch out and soak in the cinematic wonders.

Designed by
Das Studio

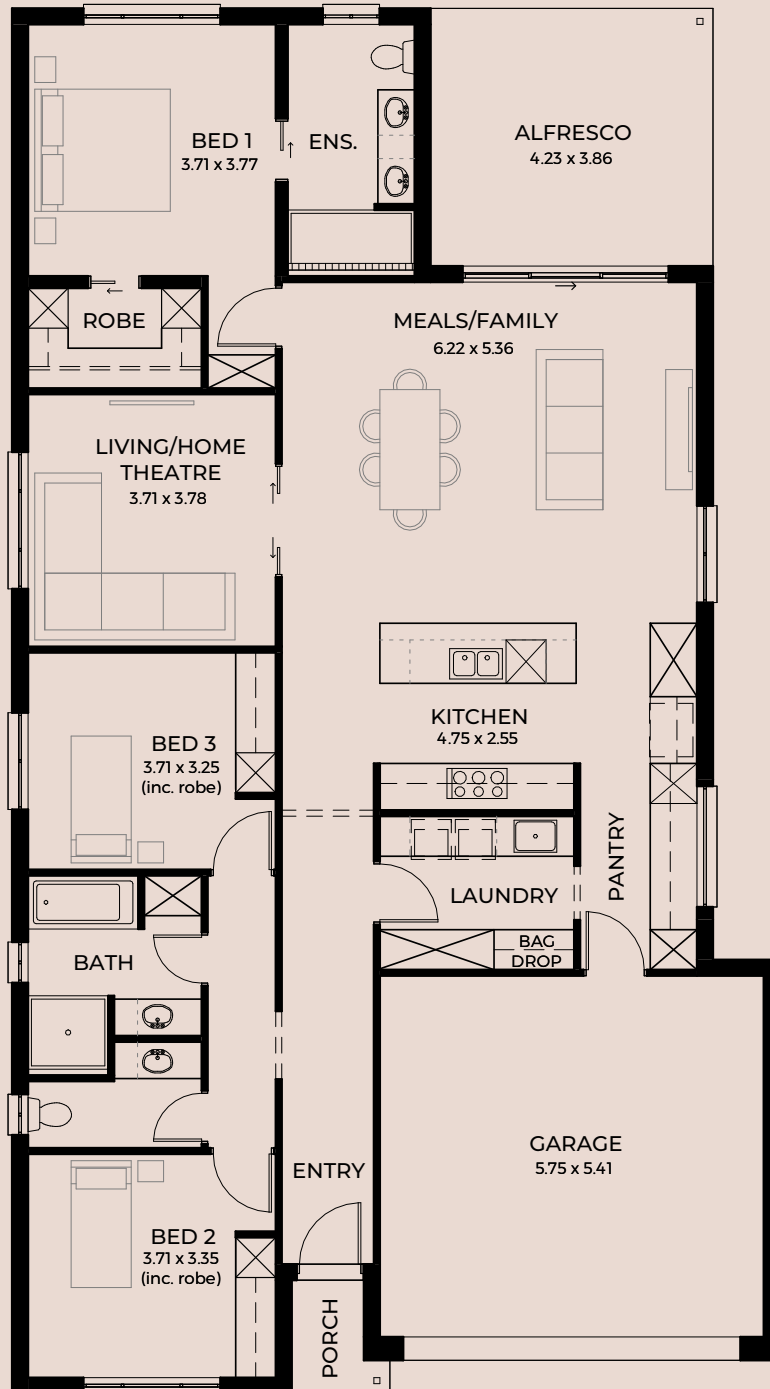


Tangerine 5


 3
  2
  2
  2
 SETBACK 5m

Width	11.50m
Depth	20.75m
Living	168.01m ²
Alfresco	16.33m ²
Porch	2.03m ²
Garage	35.09m ²
Total	221.46m²

Designed by Das Studio with comfort and convenience in mind, the Tangerine is the home of dreams. With a master suite at the rear, a spacious ensuite and undercover alfresco area it's the ideal space for relaxation and entertainment.

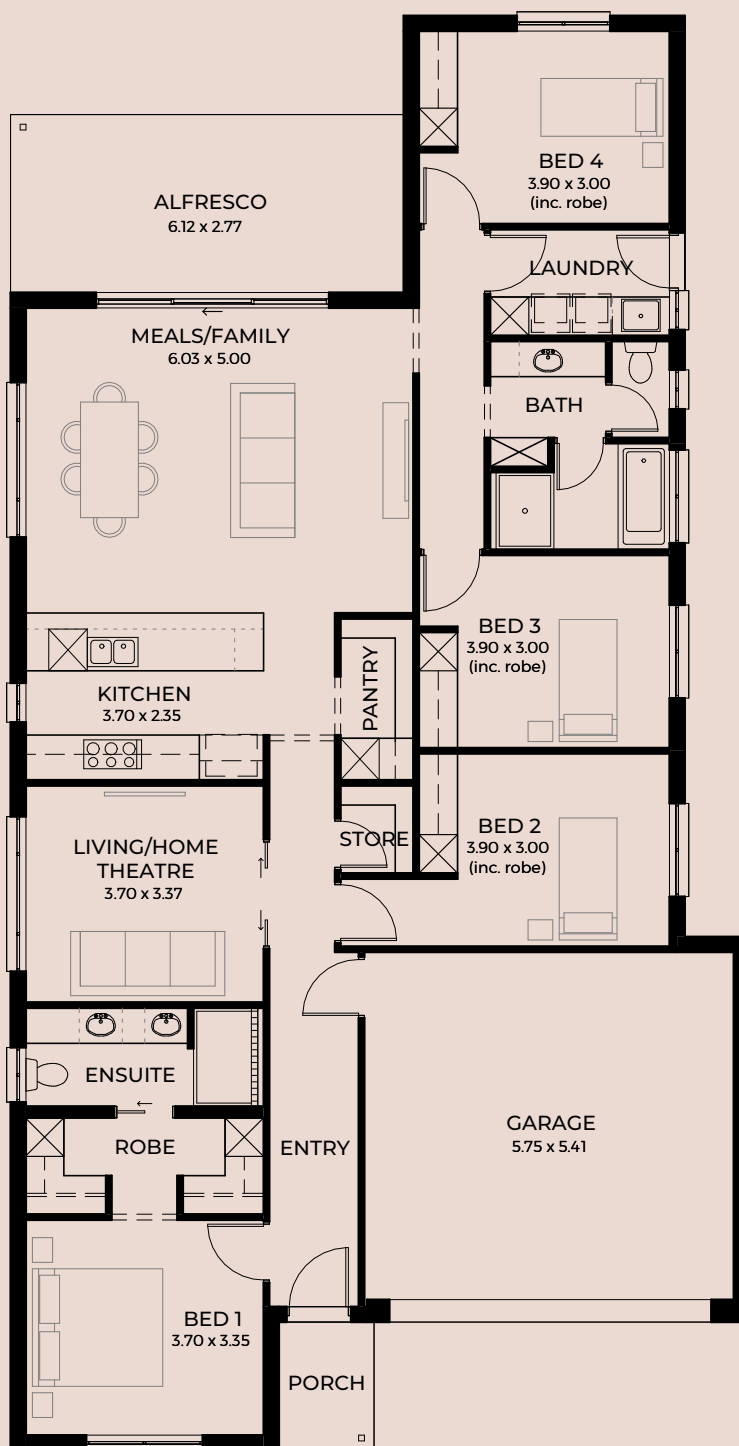


Teal 3.5


 4
  2
  2
  2
 SETBACK 3.5m

Width	11.50m
Depth	22.34m
Living	166.78m ²
Alfresco	16.95m ²
Porch	2.96m ²
Garage	34.77m ²
Total	221.46m ²

With a dedicated home theatre space, four roomy bedrooms, a luxury ensuite and walk-in robe, the Teal is designed for more than comfortable living, it's laid-back luxury at its best.

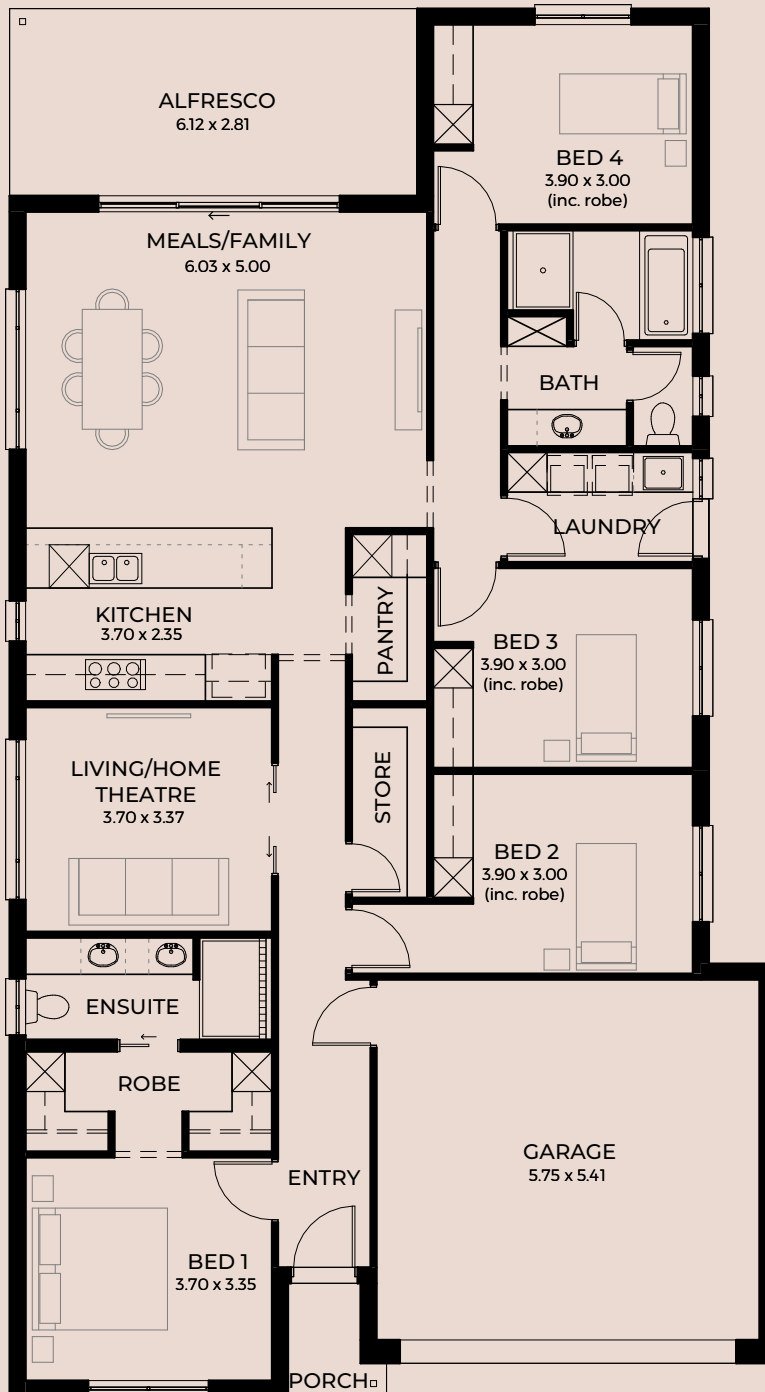


Teal 5

 4
  2
  2
  2
 SETBACK 5m

Width	11.50m
Depth	20.84m
Living	168.07m ²
Alfresco	17.20m ²
Porch	2.05m ²
Garage	35.09m ²
Total	222.41m ²

Every master chef's, the Teal features an expansive walk-in pantry and the perfect kitchen to prepare big bowls of pasta to share in the under cover alfresco area.

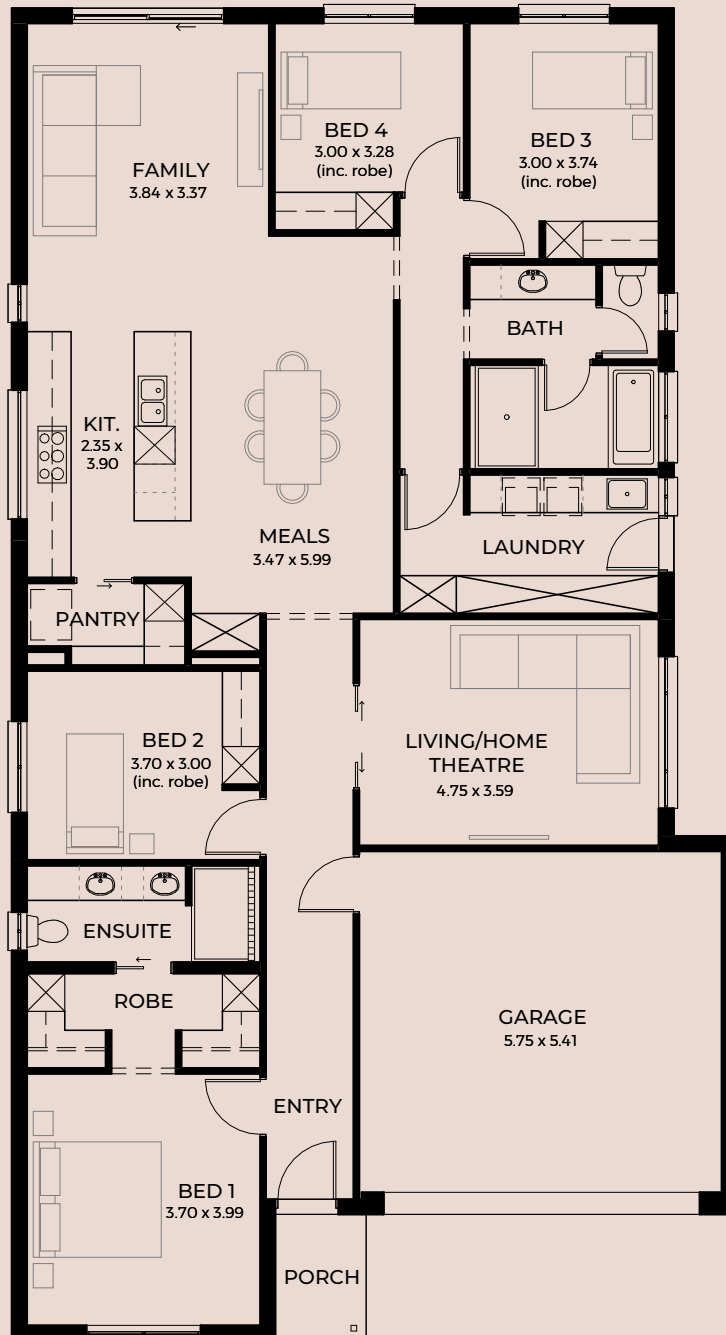


Turquoise 3.5

 4  2  2  2 SETBACK 3.5m

Width 11.50m
Depth 21.13m
Living 180.45m²
Porch 2.88m²
Garage 34.77m²
Total 218.10m²

With four bedrooms and fantastic storage, the Turquoise offers a luxury robe and ensuite for organic ambience that is simple and well-defined.



Turquoise 5

 4
  2
  2
  2
 SETBACK 5m

Width	11.50m
Depth	19.95m
Living	175.92m ²
Porch	2.05m ²
Garage	35.09m ²
Total	213.06m ²

A separate living area sets the scene for fabulous face-to-face time with loved ones. And you'll never fight over drawer space again, with spacious 'his and hers' robe, the Turquoise hits the sweet spot between luxe and lived in.

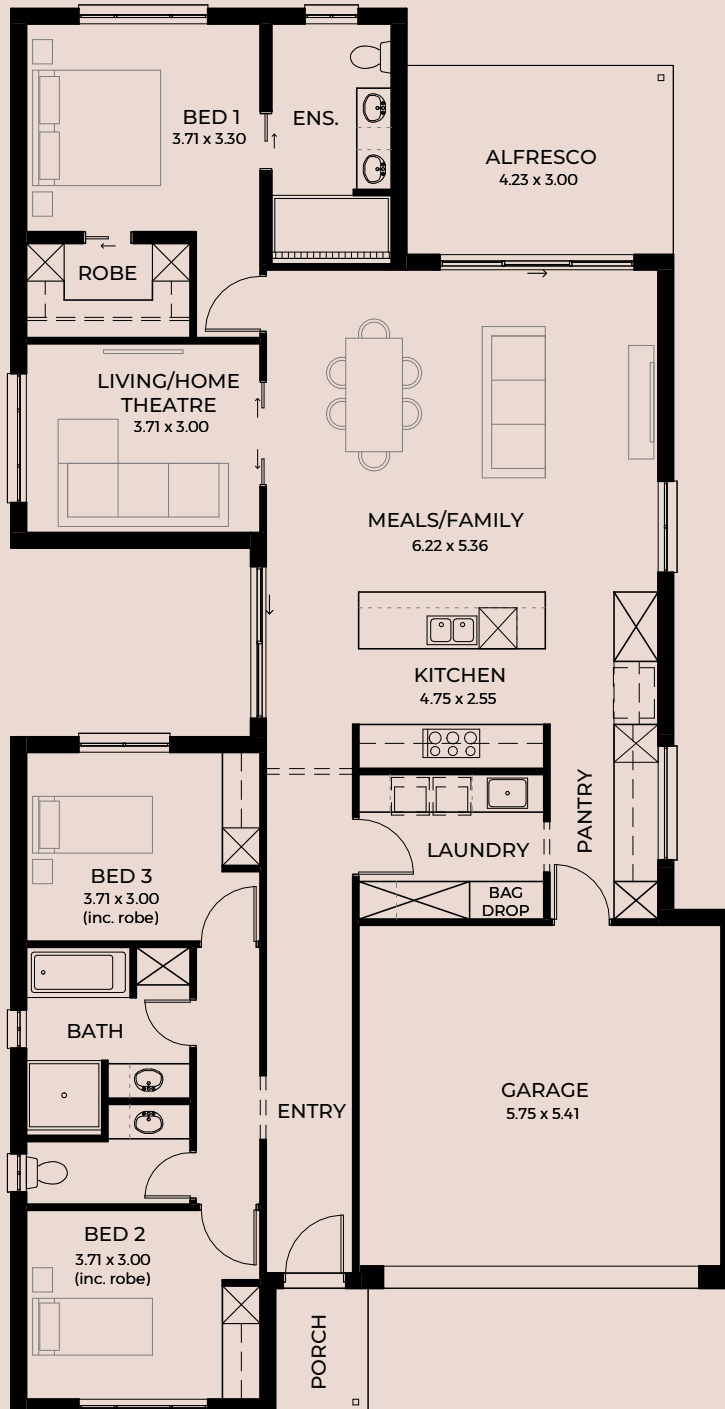


Violet 3.5

 3
  2
  2
  2
 SETBACK 3.5m

Width	11.50m
Depth	22.29m
Living	164.76m ²
Alfresco	12.69m ²
Porch	2.94m ²
Garage	34.77m ²
Total	215.16m ²

Cleverly designed by Das Studio, the internal courtyard is certainly Violet's crown jewel, perfectly positioned to bounce the light around just right. Every detail has been considered with a convenient shopper's entry from the garage to pantry in this beautifully appointed home.

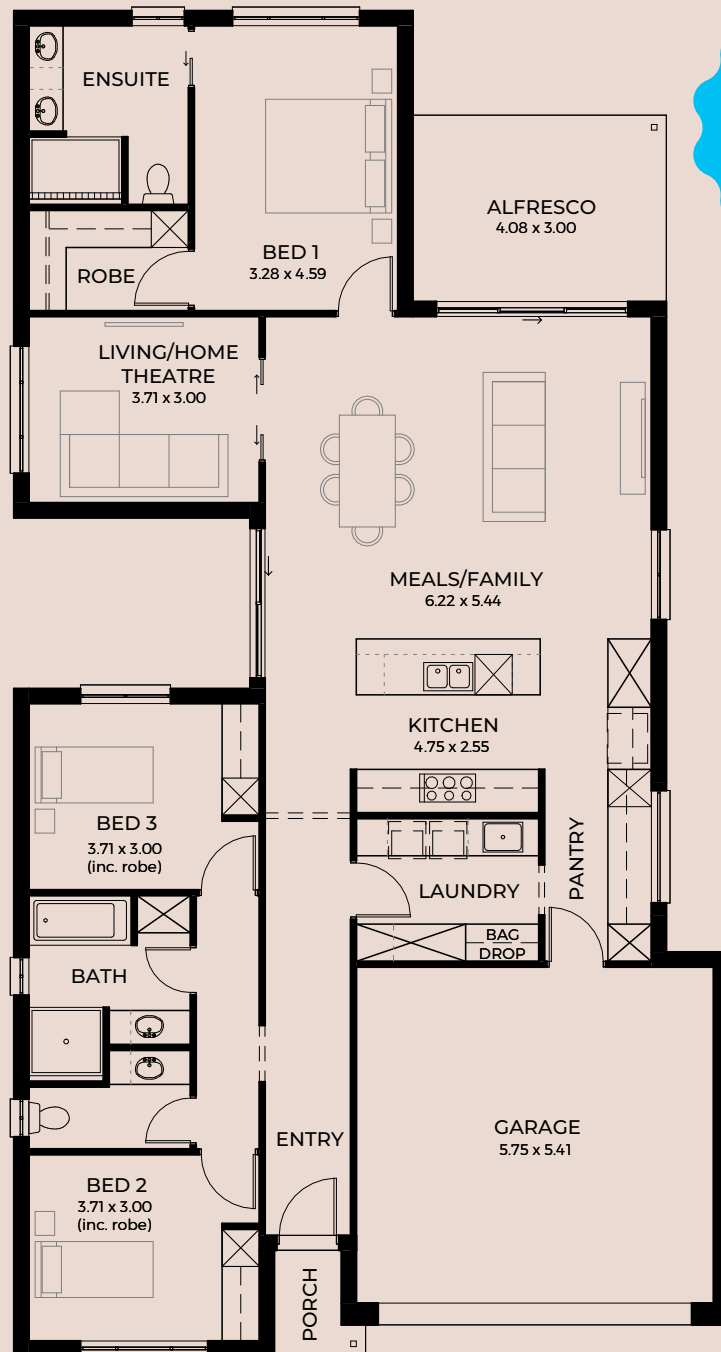


Violet 5

 3
  2
  2
  2
 SETBACK 5m

Width	11.50m
Depth	21.65m
Living	164.24m ²
Alfresco	12.24m ²
Porch	2.03m ²
Garage	35.09m ²
Total	213.60m ²

The Violet doubles as a delightfully spacious oasis with light, bright and airy rooms and a master suite cleverly positioned at the rear for a peaceful retreat.



Designed by
Das Studio

DESIGNED FOR

14m+ wide blocks







Say hello to functional layouts with no constraints on space—experience the freedom of multiple breakout areas, gifting everyone their own place to be. Generous family-friendly kitchen, dining, and entertainment spaces set the stage for memories made on nights to remember and shared moments between friends. In every corner, for every family member—feel free to live and grow the way you want.



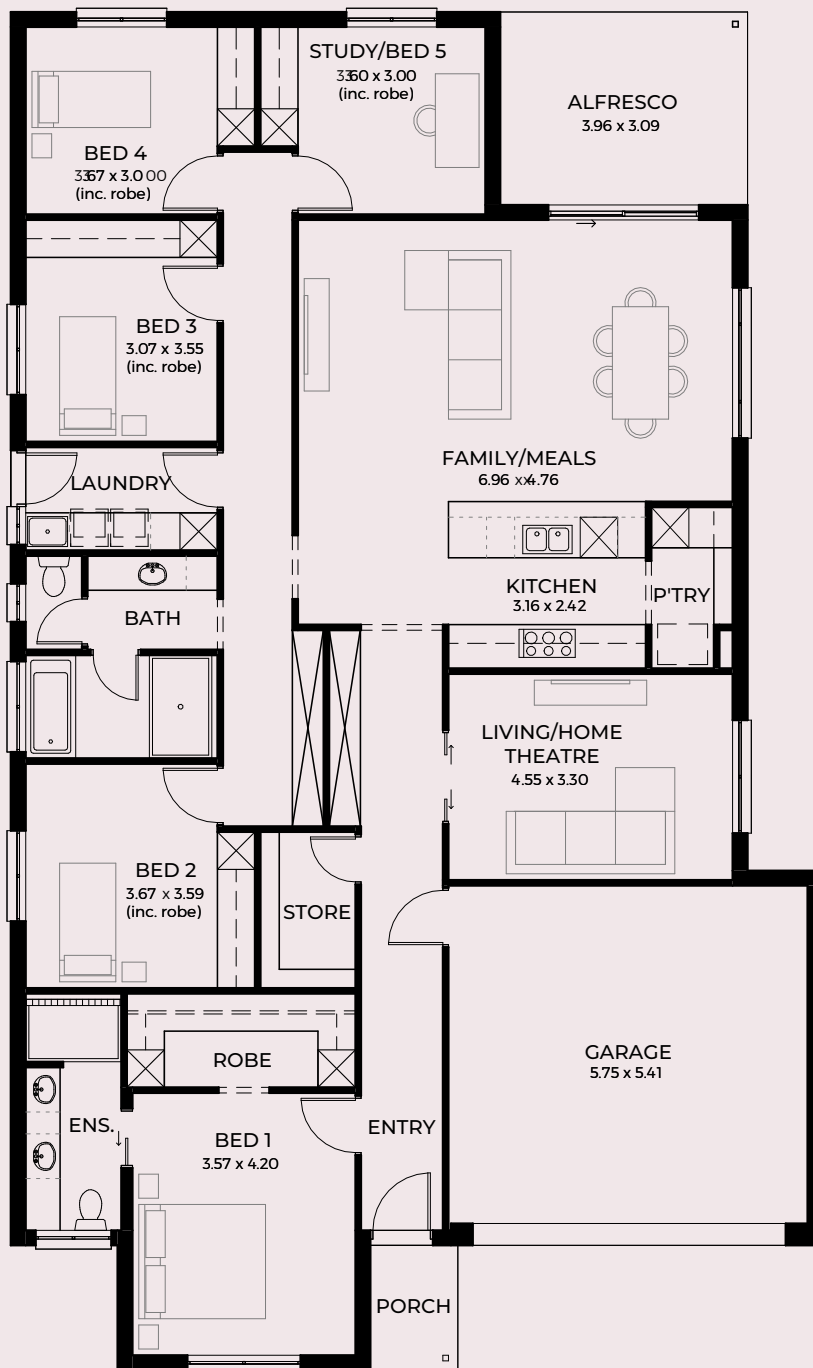


Cerulean 3.5





 5
  2
  2
  2
 SETBACK 3.5m

Width	13.00m
Depth	21.75m
Living	201.29m ²
Alfresco	12.24m ²
Porch	2.80m ²
Garage	34.82m ²
Total	251.15m ²

The Cerulean is the pinnacle of modern family living. With five generous bedrooms (or four plus a study) and a handy three-way bathroom, Friday night sleepovers and Saturday morning pancakes will be a welcomed weekend treat.

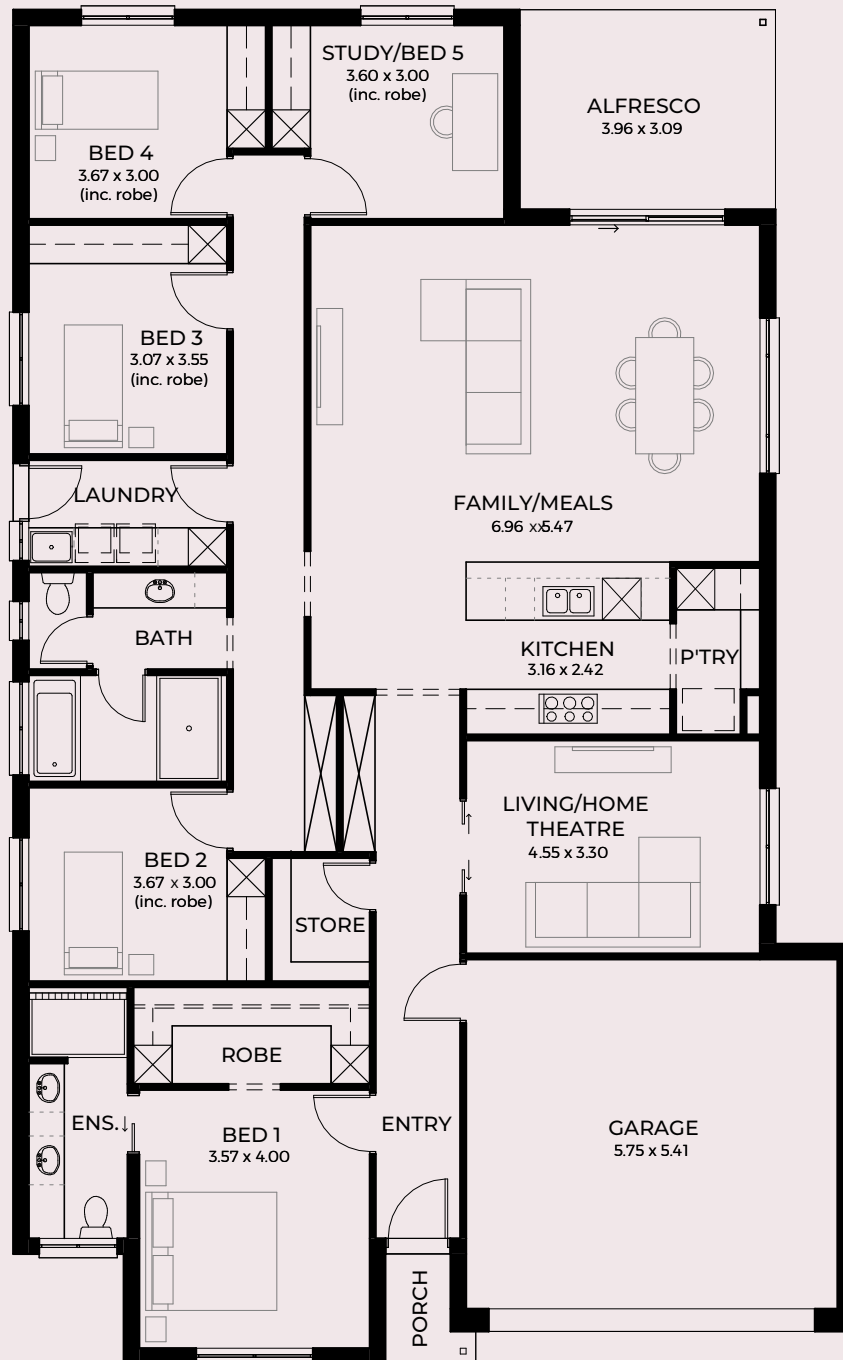


Cerulean 5

 5
  2
  2
  2
 SETBACK 5m

Width	13.00m
Depth	20.96m
Living	200.02m ²
Alfresco	12.24m ²
Porch	1.91m ²
Garage	35.14m ²
Total	249.31m ²

A parent's paradise, the Cerulean has plenty of clever storage, intelligently placed just off the hallway, a separate home theatre for cosy nights in. A master suite makes for the perfect peaceful quarters, begging for a sleepy resident to take up space within.

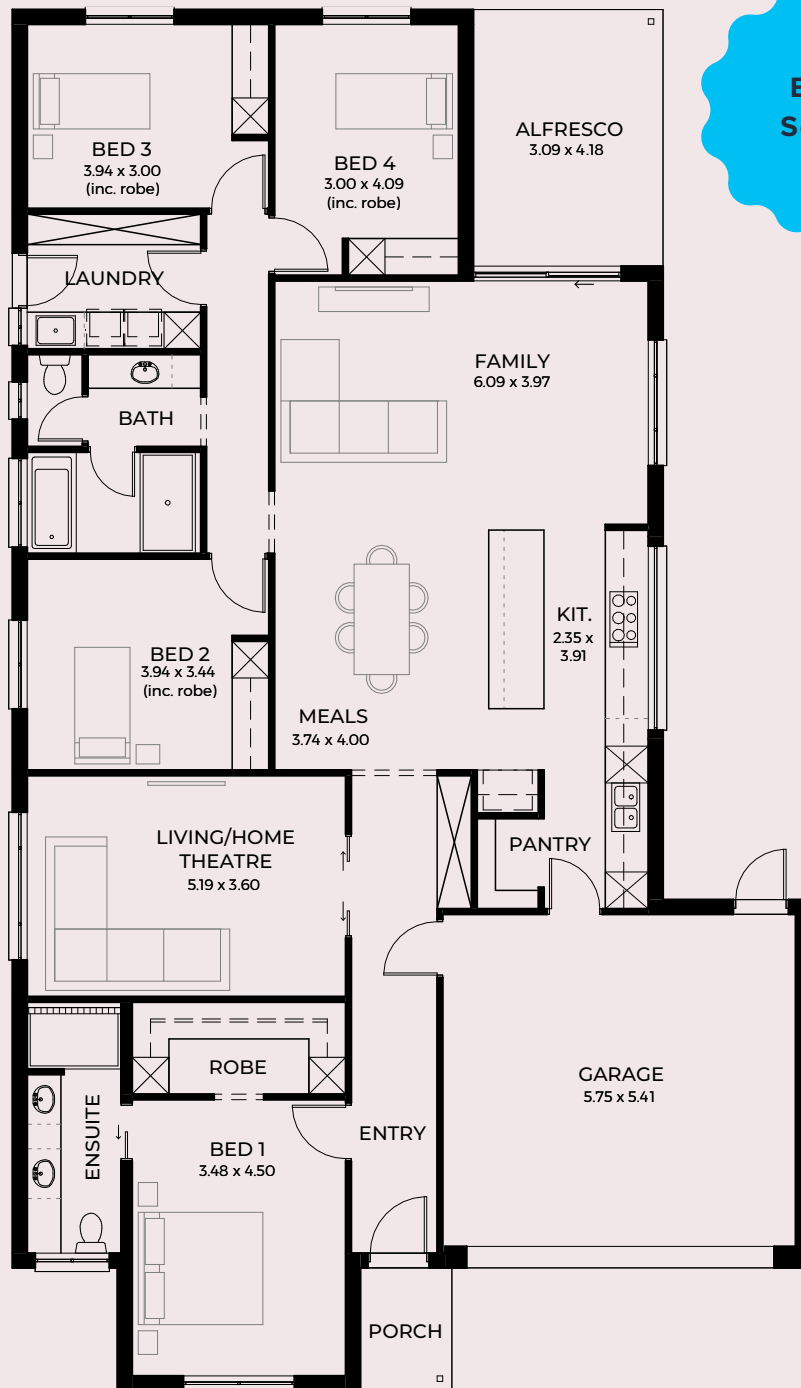


Cyan 3.5

 4
  2
  2
  2
 SETBACK 3.5m

Width 13.00m
Depth 22.50m
Living 191.60m²
Alfresco 12.92m²
Porch 2.98m²
Garage 35.11m²
Total 242.61m²

The four bedroom Cyan has everything you need with a generous pantry off the gourmet kitchen, this cleverly designed home takes contemporary living to the next level.

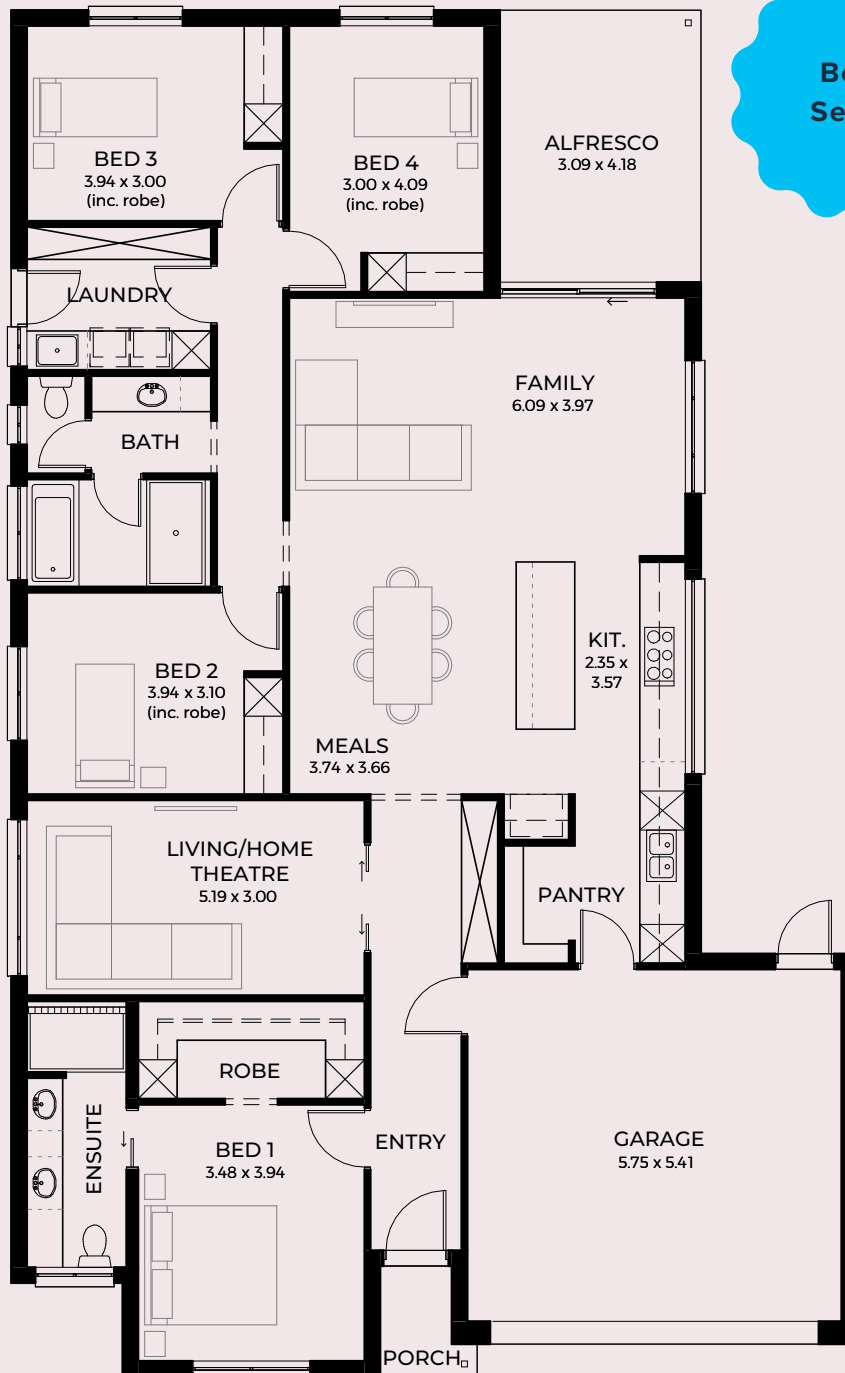


Cyan 5

 4
  2
  2
  2
 SETBACK 5m

Width	13.00m
Depth	21.00m
Living	182.41m ²
Alfresco	12.92m ²
Porch	2.07m ²
Garage	35.42m ²
Total	232.82m ²

Experience the beauty of shared mornings flooded with natural light. With a generous separate living space and luxury master suite, the Cyan is the light, bright home you'll be proud to wake up in.

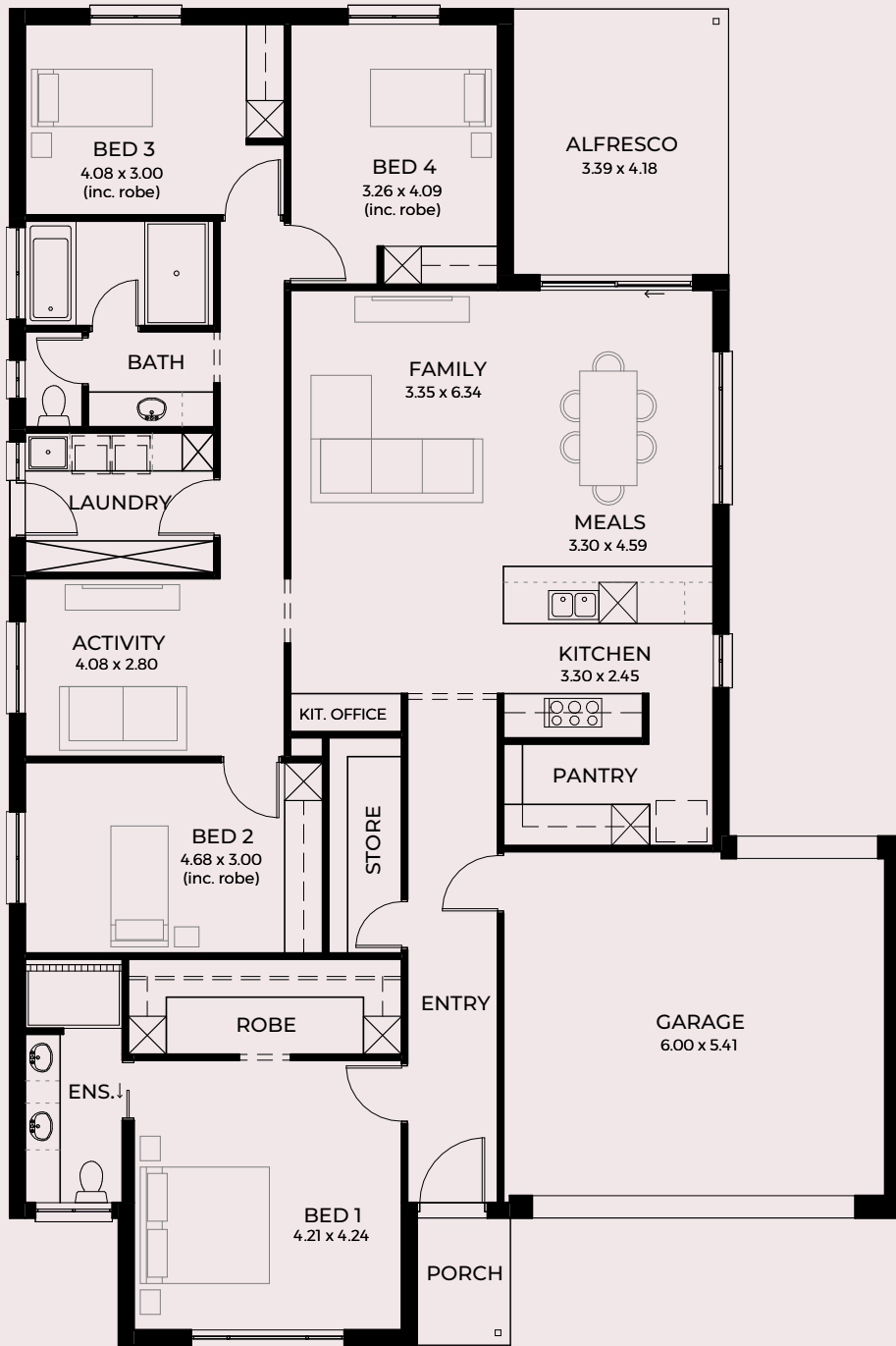


Mahogany 3.5

 4
  2
  2
  2
 SETBACK 3.5m

Width	14.00m
Depth	21.00m
Living	189.49m ²
Alfresco	14.17m ²
Porch	2.94m ²
Garage	36.62m ²
Total	243.22m ²

Featuring an impressive executive master suite and more than enough storage in every bedroom, it's easy to maintain the mess of life with the Mahogany.

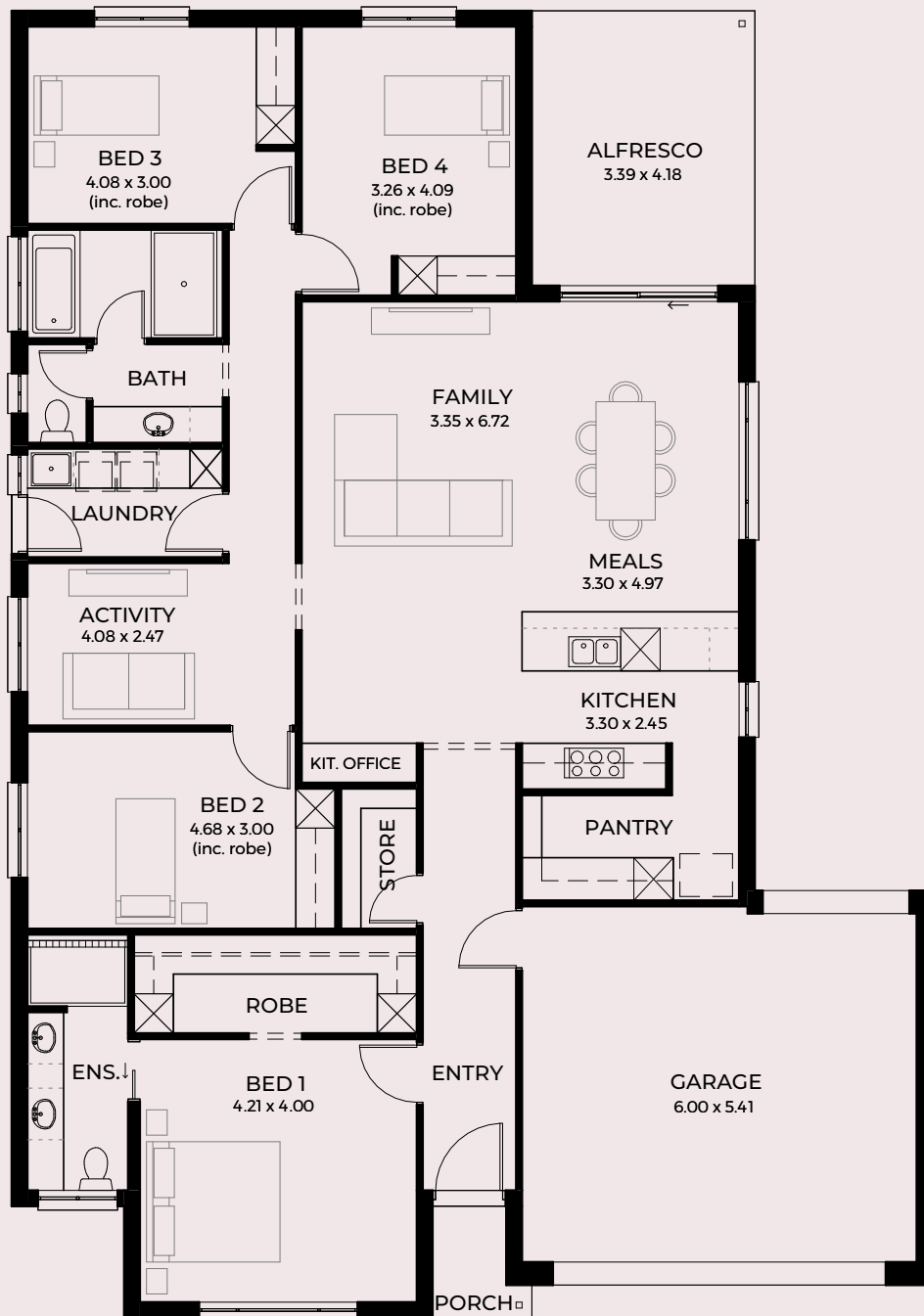


Mahogany 5





 4
  2
  2
  2
 SETBACK 5m

Width	14.00m
Depth	19.88m
Living	183.04m ²
Alfresco	14.17m ²
Porch	2.10m ²
Garage	36.94m ²
Total	236.25m ²

Enjoy a fuss free life with a home that's truly a joy to live in. Featuring an undercover alfresco area, the Mahogany is a clever balance between comfort, style and functionality.



Scarlet 3.5





 4
  2
  2
  2
 SETBACK 3.5m

Width	14.00m
Depth	21.58m
Living	181.23m ²
Alfresco	17.43m ²
Porch	2.80m ²
Garage	35.24m ²
Total	236.70m ²

The Scarlet has everything you could ever need in a modern four bedroom family home. Spend days adventuring knowing a good night's sleep is always ahead, with a dedicated kid's zone and a luxury master set away from street noise.



Scarlet 5


 4
  2
  2
  2
 SETBACK 5m

Width	14.00m
Depth	20.08m
Living	175.93m ²
Alfresco	17.43m ²
Porch	1.91m ²
Garage	35.56m ²
Total	230.83m ²

Perfect for sports loving families on the move, the Scarlet features a huge undercover alfresco that backyard dreams are made from. Multi-tasking is made easy with the Scarlet's cleverly designed layout, complete with mud room to stash the spill of school bags.

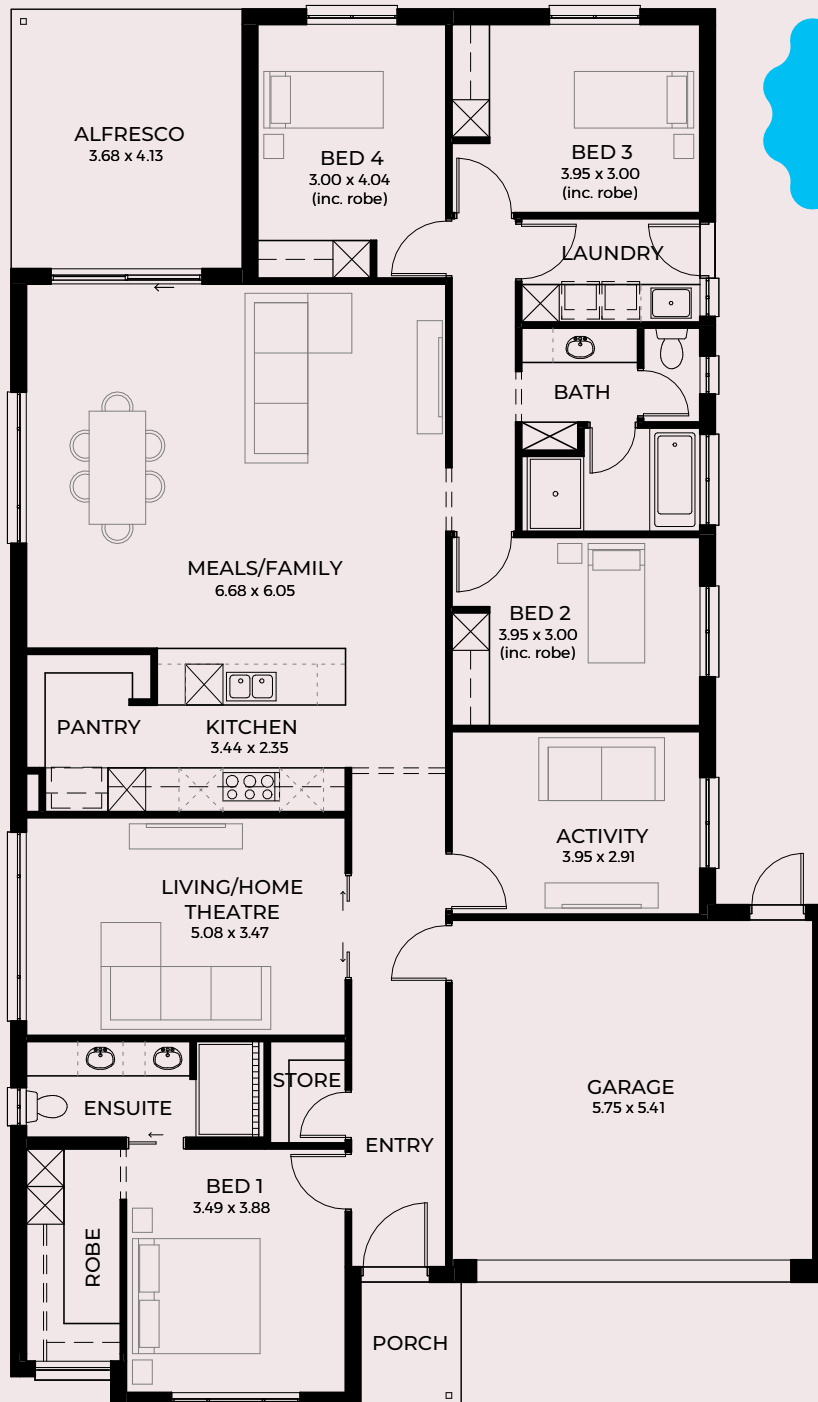


Sepia 3.5



 4
  3
  2
  2
 SETBACK 3.5m

Width	13.00m
Depth	22.25m
Living	197.76m ²
Alfresco	15.20m ²
Porch	3.20m ²
Garage	34.96m ²
Total	251.12m ²

A home with features a plenty, the Sepia features an executive master suite, four generous bedrooms and an abundance of storage to cater for even the fullest family life.



Sepia 5

 4
  3
  2
  2
 SETBACK 5m

Width	13.00m
Depth	21.35m
Living	195.99m ²
Alfresco	13.58m ²
Porch	2.25m ²
Garage	35.28m ²
Total	247.10m ²

The spacious Sepia family home is packed with impressive features including an undercover alfresco area, walk in pantry and separate living areas to ensure everyone has a space to call their own.



DESIGNED FOR

16m+ wide blocks

For the ones who always have an extra plate at the ready, our designs for 16+ metre wide blocks are built with room for the whole family and then some. Custom-built for the growing family or an entertainer's happiest days, enjoy a free-flowing indoor-outdoor lifestyle, with multiple living spaces, generous bedrooms, a mud room off the garage and a relaxing kitchen layout.





Amber 3.5





 5
  3
  2
  2
 SETBACK 3.5m

Width	16.00m
Depth	22.15m
Living	215.33m ²
Alfresco	15.33m ²
Porch	2.80m ²
Garage	40.40m ²
Total	273.86m ²

The Amber was designed with big, beautiful families in mind. With five gloriously generous bedrooms, clever storage just off the garage, this expansive beauty is ready to be filled with the sounds of home.



Amber 5

 5
  3
  2
  2
 SETBACK 5m

Width	16.00m
Depth	21.55m
Living	215.72m ²
Alfresco	15.33m ²
Porch	1.91m ²
Garage	40.40m ²
Total	273.36m ²

Whether you're looking for a much-needed meditation moment or throwing a raucous dinner party, there's something for everyone in this cleverly designed home. Featuring a generous butler's pantry and handy mud room.



Ebony 3.5

 4
  2
  2
  2
 SETBACK 3.5m


Width	16.00m
Depth	18.95m
Living	192.68m ²
Alfresco	16.42m ²
Porch	2.80m ²
Garage	40.37m ²
Total	252.27m ²

The Ebony is a beautiful spacious four bedroom home designed to grow with you and your family. Keep clutter and chaos at bay with a cleverly appointed bag drop, convenient three-way bathroom and a mudroom to park even the messiest mini feet.

Designed for 27m deep blocks



Ebony 5

 4
  2
  2
  2
 SETBACK 5m

Width	16.00m
Depth	17.40m
Living	182.81m ²
Alfresco	17.42m ²
Porch	1.91m ²
Garage	40.37m ²
Total	242.51m ²

The Ebony makes it easy to opt for quiet night in with your nearest and dearest or get ready for a loud night out with friends in your luxury ensuite. With undercover alfresco and an indoor-outdoor quality, it's easy to kick back and relax in this family friendly home.

Designed for 27m deep blocks



Emerald 3.5



 4
  3
  2
  2
 SETBACK 3.5m

Width	16.00m
Depth	21.96m
Living	221.51m ²
Alfresco	25.45m ²
Porch	2.92m ²
Garage	40.37m ²
Total	290.25m²

An entertainer's delight, a beautifully designed chef's kitchen beats as the heart of this free-flowing home. Space for activities and a spacious separate study, makes for a dreamy home to work rest and play.



Emerald 5

 4
  3
  2
  2
 SETBACK 5m

Width	16.00m
Depth	21.46m
Living	220.46m ²
Alfresco	26.55m ²
Verandah	6.60m ²
Garage	40.69m ²
Total	294.30m ²

Designed with functionality and flow in mind, the Emerald has ample room for every family member to stretch out and shared warm spaces to come back together. The forever home that will grow as you do.



Fuchsia 3.5

 4
  2
  2
  2
 SETBACK 3.5m



Width	15.00m
Depth	18.60m
Living	190.89m ²
Porch	2.80m ²
Garage	35.25m ²
Total	228.94m ²

This remarkable four bedroom home has a convenient mud room, to drop your bags and your worries at the end of a busy day. The shoppers' entry directly from the garage leads you straight into the walk-in pantry, makes it easy to get organised for the week ahead.

Designed for 27m deep blocks



Fuchsia 5

 4
  2
  2
  2
 SETBACK 5m

Width	15.00m
Depth	18.90m
Living	204.57m ²
Porch	1.91m ²
Garage	35.25m ²
Total	241.73m ²

Packed with everything needed for effortless living. Enjoy movie nights in the separate home theatre, plus a thoughtfully designed three-way bathroom makes mornings a breeze for the whole family.

Designed for 27m deep blocks



Magenta 3.5





 5
  3
  2
  2
 SETBACK 3.5m

Width	17.00m
Depth	22.50m
Living	244.46m ²
Alfresco	25.33m ²
Porch	2.90m ²
Garage/Store	44.95m ²
Total	317.64m ²

Brimming with personality and possibilities, this stunning five bedroom home was designed for a whole lot of living. With an enormous, casual living, dining and games room plus a three-way bathroom – there’s enough space for even the biggest personalities to stretch out.



Magenta 5

 5
  3
  2
  2
 SETBACK 5m

Width	17.00m
Depth	21.80m
Living	246.89m ²
Alfresco	25.33m ²
Porch	2.22m ²
Garage/Store	44.95m ²
Total	319.39m ²

Mum and dad will love stepping into their own master suite retreat for a moment of meditation at the end of a busy day. Spend less time unloading groceries and more uploading memories, with a conveniently placed store just off the garage and shoppers' entry.



Slim but stylish: designer elevations for narrow blocks



Explore an extensive range of elevations, crafted for smaller frontages these designs are slight on width, not on style.

SA HOUSING CENTRE



From traditionalists through to contemporary connoisseurs, we have something to suit every taste, personality and budget.

Broadly beautiful: designer elevations for wide blocks



Nothing speaks more to who you are, than the face of your home. Discover our extensive range of elevations meticulously crafted for wider frontages.

SA HOUSING CENTRE



With larger than life street appeal, each design is generous in space and rich in style — from modern details or classic cues there's something for everyone.



SA HOUSING CENTRE

Display homes

Our beautiful SA Housing Centre display homes are the perfect place to visit to find all the info and inspiration you need to build a first home you can truly be proud of.

Scan the QR code to find a location near you.



SA HOUSING CENTRE

**Ditch the rent
Build your dream!**



**Visit sahousingcentre.com.au to find a display home near you.
Open 1 - 5pm Monday, Wednesday, Saturday, Sunday and Public Holidays
25 North Terrace Hackney SA 5069 Call 1300 730 187
sahousingcentre.com.au**

*The floorplans and/or elevations contained within this document are for illustration purposes only and products subject to change without notice. If a product is sold out or superseded, SA Housing Centre reserves the right to substitute a suitable replacement. Please speak to an SA Housing Centre Building Consultant for further information. Please refer to the working drawings you receive upon signing a contract for precise measurements. To the extent that there is any conflict between the material contained in this publication and contract of sale, the purchaser acknowledges that the terms of the contract of sale will at all times prevail. ACN 007641787 Builder's Licence No G8969 RLA 230557 EO&E. © Copyright 2024. Publication date: June 2024.