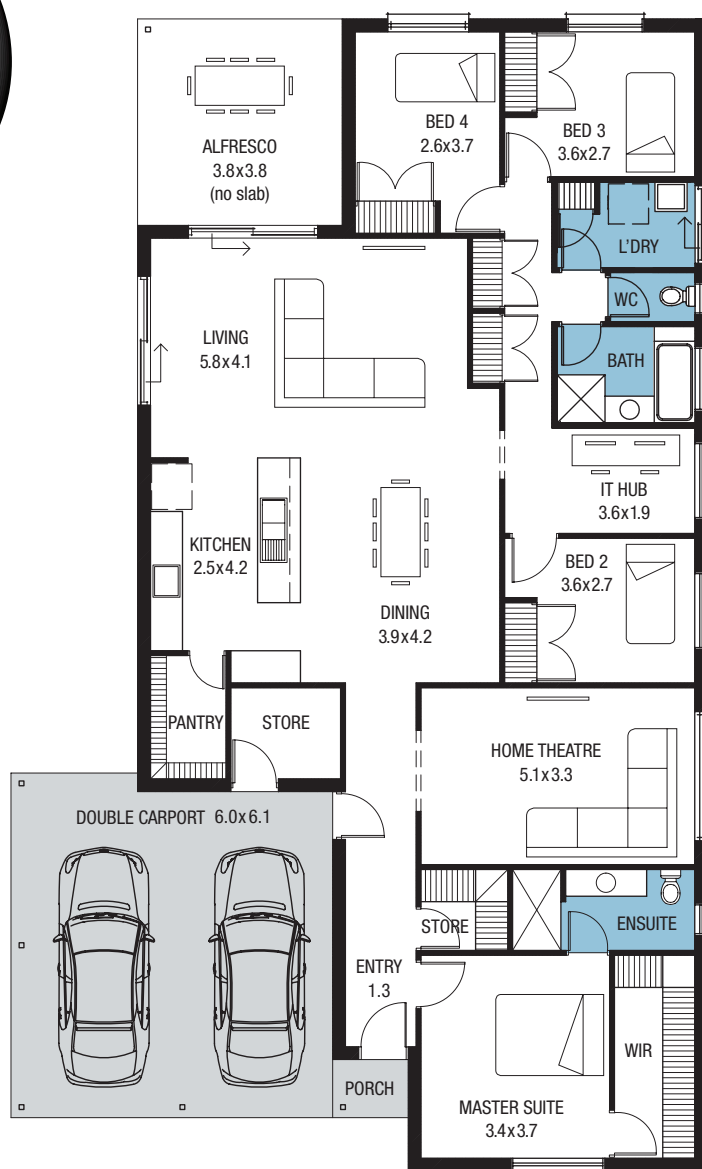




Stay connected with an IT hub in the spacious 4 bedroom Kentucky Alfresco Mk2. Clever storage, a huge home theatre, a luxurious master suite and an alfresco area means this home really works well for the whole family.

Home width	13.14m
Home depth	21.47m
Living	185.91m ²
Double carport	38.05m ²
Total area	240.24m ²



With 4 bedrooms, each with a walk-in robe, a large walk-in pantry and 2 storage areas, the Nevada Alfresco Mk2 has plenty of storage for the whole family! With a large open plan living area that spills out onto the alfresco, entertaining has never been easier!

Home width	17.00m
Home depth	20.00m
Living	211.82m ²
Double carport	35.21m ²
Total area	266.12m ²





25 North Terrace
Hackney SA 5069
Call 1300 730 187
sahousingcentre.com.au

On Display at Liberty Estate
Jefferson Boulevard, Two Wells

Open 1-5pm Mon, Wed, Sat, Sun
and Public Holidays