



\*T&C's Apply

# TOM & CALLUM



## Exclusive to First Home Buyers

- Brand new SA Housing Centre home in Clover Wood, Mt Barker, proudly developed by Lanser
- Fixed Price\*. No surprises!
- No Stamp Duty\*
- Turnkey. Ready to move in early 2027\*

**Fixed Price**  
**\$749,000\***



# Potential First Home Buyer Benefit

**\$15K\***  
First Home  
Owner Grant



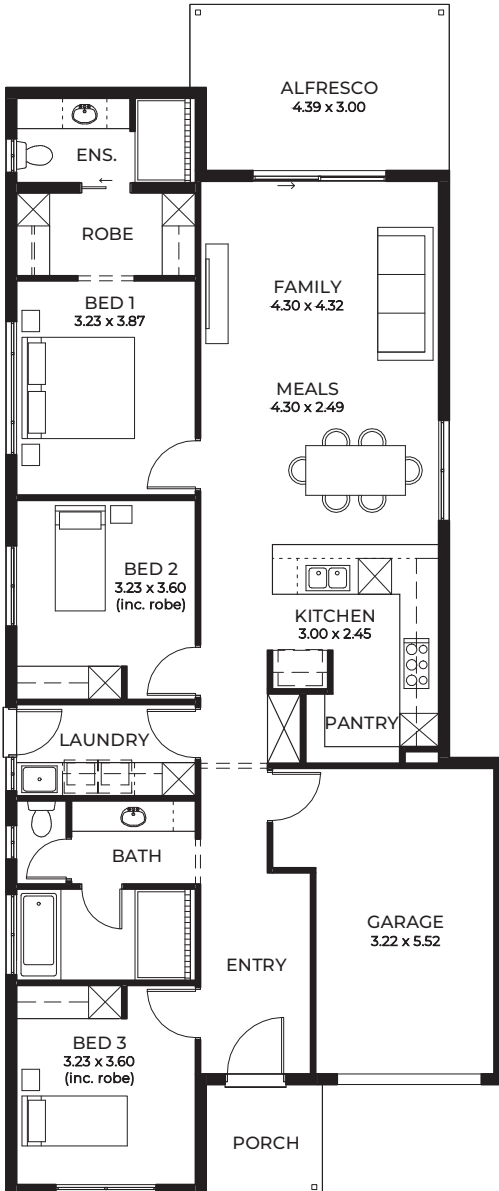
**\$35K\***  
Stamp Duty  
Exemption



**\$35K\***  
Potential  
LMI Savings



**\$85K\***  
Total  
Potential  
Benefit



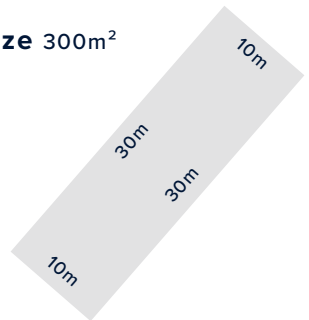
**The Pewter by  
SA Housing Centre  
Picked by the  
Fresh Brekkie Team**



## House size

Width	9.00m
Depth	21.50m
Living	129.45m <sup>2</sup>
Alfresco	13.60m <sup>2</sup>
Porch	4.20m <sup>2</sup>
Garage	21.08m <sup>2</sup>
Total	168.33m <sup>2</sup>

Block size 300m<sup>2</sup>



[admin@fresh927.com.au](mailto:admin@fresh927.com.au)  
[fresh927.com.au](http://fresh927.com.au)



\* T&C's apply scan for details