

# Home & Land Package

# SA HOUSING CENTRE

## \$462,674\*

LOT 750 LAUREN CLOSE  
VIRGINIA GROVE

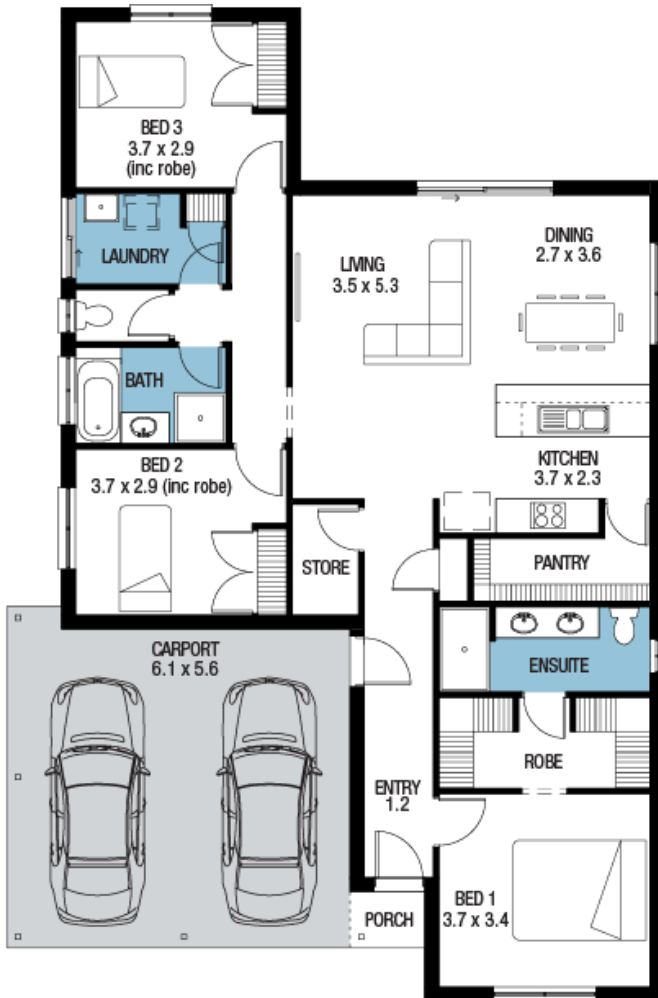
(Virginia Grove)

WILLIAMSBURG

FACADE: Frontage Double Garage 15

3 1 2 2

BLOCK SIZE : 413M<sup>2</sup> HOUSE SIZE : 164M<sup>2</sup>



### PACKAGE INCLUSIONS

- ✓ 10K promotional discount applied
- ✓ Frontage as selected or your choice, including slab and tiles.
- ✓ Upgraded double garage with auto single span panel-lift door
- ✓ Upgraded to 2700mm ceiling height
- ✓ Flooring included (Carpets to rooms/Timber laminate to living, kitchen)
- ✓ Ducted reverse cycle air-conditioning
- ✓ Flyscreens & locks to windows
- ✓ Insulation to external & ceiling
- ✓ 900mm high mirror to Ensuite & Bath
- ✓ Colorbond roof included
- ✓ Stain steel appliances to Kitchen
- ✓ Flat breakfast bar to Kitchen
- ✓ Overhead cupboards to Kitchen
- ✓ Dishwasher provision & microwave provision to kitchen
- ✓ FREE Square Set Cornices to Entry, Living and Dining
- ✓ FREE Milan Semi-Framed Shower Screens
- ✓ 3 Month Maintenance & 25 Year Structural Guarantee
- ✓ Generous site works and footings allowances

## Easy

Visit us at [sahousingcentre.com.au](http://sahousingcentre.com.au) or call **1300 730 187**

ENQUIRIES:

M: E:

\*Conditions apply. Certain elevations may not match the particular floor plan published in this package and, as such, all floor plans and elevations are for illustration purposes only. Land subject to availability. The land referred to in this promotion is not owned by us. We make no representation and, to the extent permissible at law, we disclaim all liability, as to the suitability of the land to build on, or the suitability of any house design, or otherwise. You must satisfy yourself of that by inspection, or by taking professional advice, or otherwise. Pricing is indicative only and based on standard costings. Price may vary depending on selections, engineering, council and utility requirements and adjustments to allowances. All packages subject to final council approval. Alan Hickenbotham Pty Ltd ABN 13 007 567 222, RLA 230557. Construction Services Australia Pty Ltd ABN 99 007 641 787, Building Licence G8969.