

# Home & Land Package

**SA** HOUSING CENTRE

**\$424,000\***

LOT 221 VALENTINE STREET  
VIRGINIA

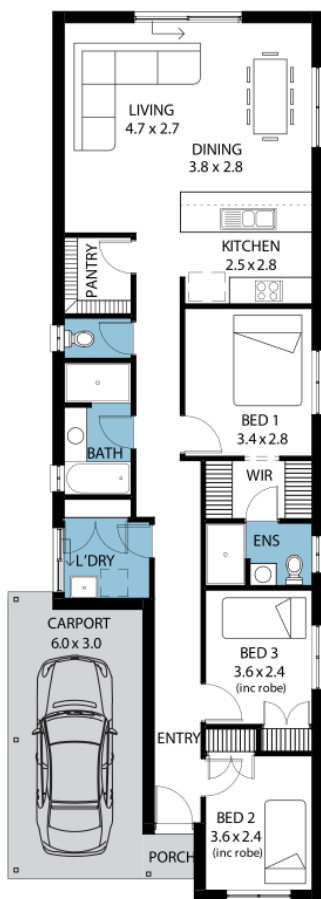
DETROIT

FACADE: **Frontage Single Garage**

06

 **3**  **1**  **2**  **1**

BLOCK SIZE : **240M<sup>2</sup>** HOUSE SIZE : **123M<sup>2</sup>**



## PACKAGE INCLUSIONS

- ✓ Rare block in Sunflowers Estate, Virginia
- ✓ Titles early next year move in 12 months after
- ✓ Customisable floorplan upgrades available
- ✓ All electrical water gas NBN connected
- ✓ Walking distance to bus & shops
- ✓ Extensive range of selections to interior
- ✓ Garage not carport as pictured
- ✓ Timber frame home taller 2.7m ceilings
- ✓ Footings price included to engineer specs
- ✓ Builders promotional package included\*
- ✓ \*\$12,000 discount applied\*
- ✓ Air con system ducted w/ touch panel
- ✓ All flooring & tiling
- ✓ Kitchens & bathrooms as per display finish
- ✓ Dishwasher included limited time only
- ✓ Butlers pantry option for extra storage!
- ✓ Colorbond roof
- ✓ Finance with your Broker OR ours
- ✓ Fully turn key option add only \$20,000
- ✓ For fast updates contact Leonardo

**Easy**

ENQUIRIES: **Leo Murray-Walpole** M: 0402 016 847 E: leom@sahousingcentre.com.au

Visit us at **sahousingcentre.com.au** or call **1300 730 187**

\*Conditions apply. Certain elevations may not match the particular floor plan published in this package and, as such, all floor plans and elevations are for illustration purposes only. Land subject to availability. The land referred to in this promotion is not owned by us. We make no representation and, to the extent permissible at law, we disclaim all liability, as to the suitability of the land to build on, or the suitability of any house design, or otherwise. You must satisfy yourself of that by inspection, or by taking professional advice, or otherwise. Pricing is indicative only and based on standard costings. Price may vary depending on selections, engineering, council and utility requirements and adjustments to allowances. All packages subject to final council approval. Alan Hickinbotham Pty Ltd ABN 13 007 567 222, RLA 230557. Construction Services Australia Pty Ltd ABN 99 007 641 787, Building Licence G8969.