

# Home & Land Package

**SA** HOUSING CENTRE

**\$499,148\***

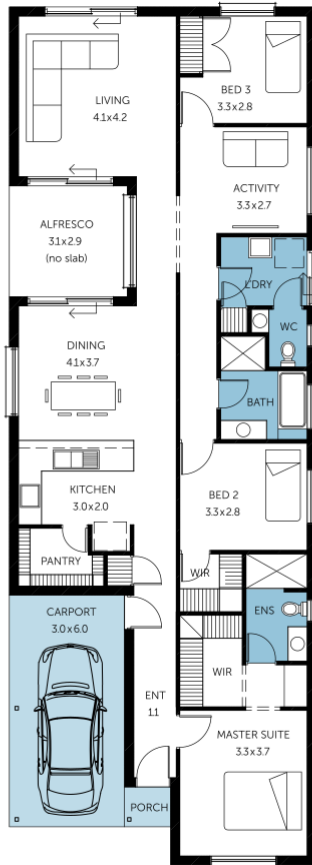
LOT 5004 KENNEDY AVENUE  
HINDMARSH ISLAND

ORLANDO ALFRESCO

FACADE: **Frontage Single Garage** 06

 **3**  **2**  **2**  **1**

BLOCK SIZE : **442M<sup>2</sup>** HOUSE SIZE : **175M<sup>2</sup>**



## PACKAGE INCLUSIONS

- ✓ Generous Footings Allowance
- ✓ Upgrade to Double Garage: Single Panel Lift Door
- ✓ Choice of Applied \$10k Discount or \$18k Free Luxury Upgrades Pack
- ✓ Associated Regional Travel Costs of \$12k+ Included
- ✓ Multiple Frontage Design Choices (Option 6 selected)
- ✓ Choose your own External/Internal Colour Schemes
- ✓ Fully Customisable Internal Floor Plan
- ✓ 2.7m Ceilings Throughout
- ✓ Stainless Steel Appliances to Kitchen
- ✓ Ducted Reverse Cycle Air Conditioning
- ✓ Flooring - Bedroom Carpet & Timber Laminate Living
- ✓ R6.0 Insulation to Ceilings
- ✓ 6 Star Energy Rating & Assessment Requirement Fee
- ✓ Wind Speed N3 Safety Compliant
- ✓ 25 Year Structural Guarantee
- ✓ \*\*Plus Many More Standard Inclusions\*\*

**Easy**

ENQUIRIES: **Luke Shah** M: 0477 396 801 E: [lukes@sahousingcentre.com.au](mailto:lukes@sahousingcentre.com.au)

Visit us at [sahousingcentre.com.au](http://sahousingcentre.com.au) or call **1300 730 187**

\*Conditions apply. Certain elevations may not match the particular floor plan published in this package and, as such, all floor plans and elevations are for illustration purposes only. Land subject to availability. The land referred to in this promotion is not owned by us. We make no representation and, to the extent permissible at law, we disclaim all liability, as to the suitability of the land to build on, or the suitability of any house design, or otherwise. You must satisfy yourself of that by inspection, or by taking professional advice, or otherwise. Pricing is indicative only and based on standard costings. Price may vary depending on selections, engineering, council and utility requirements and adjustments to allowances. All packages subject to final council approval. Alan Hickinbotham Pty Ltd ABN 13 007 567 222, RLA 230557. Construction Services Australia Pty Ltd ABN 99 007 641 787, Building Licence G8969.