

# Home & Land Package

**SA** HOUSING CENTRE

**\$471,500\***

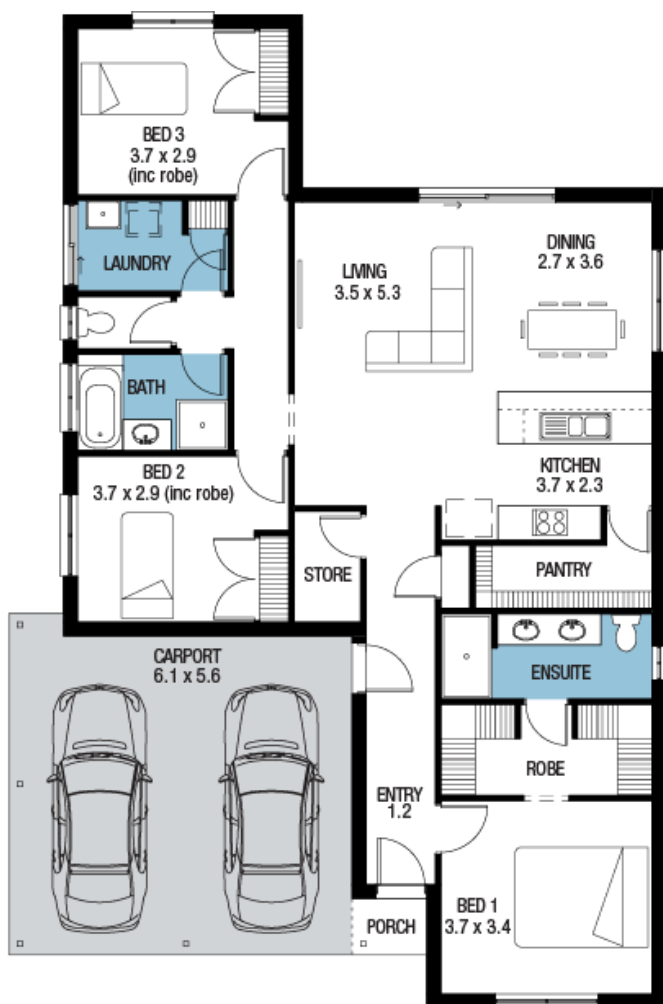
LOT 31 SIR SIDNEY KIDMAN BOULEVARD  
KAPUNDA

WILLIAMSBURG

FACADE: **Frontage Double Garage** **17**

 **3**  **1**  **2**  **2**

BLOCK SIZE : **437M<sup>2</sup>** HOUSE SIZE : **164M<sup>2</sup>**



## PACKAGE INCLUSIONS

- ✓ Fully Turn-Key Package!
- ✓ 437sqm of Flat, Rectangular land in Kidman Rise Estate
- ✓ FREE Ducted Reverse Cycle Air Con
- ✓ \$3,500 Bonus Discount
- ✓ Fully Paved Driveway & Perimeter Paths
- ✓ 2700mm Ceilings
- ✓ Frontage 17, as pictured (or of your choice)
- ✓ Carpet & Timber Laminate Flooring
- ✓ Panel Lift Door & Remotes to Double Garage
- ✓ Overhead Cupboards to Kitchen, including over fridge
- ✓ Stainless steel kitchen appliances
- ✓ Free Dishwasher
- ✓ 25-degree Roof Pitch
- ✓ Highly Upgraded Insulation throughout
- ✓ All Travel Costs
- ✓ Colorbond Roof, Fascias & Gutters
- ✓ NBN Cabling, LPG Gas Provision
- ✓ Generous Siteworks & Footings Allowance

**Easy**

ENQUIRIES: **Dominic Weakley** M: 0449 514 059 E: [dominicw@sahousingcentre.com.au](mailto:dominicw@sahousingcentre.com.au)

Visit us at **[sahousingcentre.com.au](http://sahousingcentre.com.au)** or call **1300 730 187**

\*Conditions apply. Certain elevations may not match the particular floor plan published in this package and, as such, all floor plans and elevations are for illustration purposes only. Land subject to availability. The land referred to in this promotion is not owned by us. We make no representation and, to the extent permissible at law, we disclaim all liability, as to the suitability of the land to build on, or the suitability of any house design, or otherwise. You must satisfy yourself of that by inspection, or by taking professional advice, or otherwise. Pricing is indicative only and based on standard costings. Price may vary depending on selections, engineering, council and utility requirements and adjustments to allowances. All packages subject to final council approval. Alan Hickinbotham Pty Ltd ABN 13 007 567 222, RLA 230557. Construction Services Australia Pty Ltd ABN 99 007 641 787, Building Licence G8969.