

Home & Land Package

SA HOUSING CENTRE

\$544,000*

LOT 122 NEW ROAD
ANGLE VALE

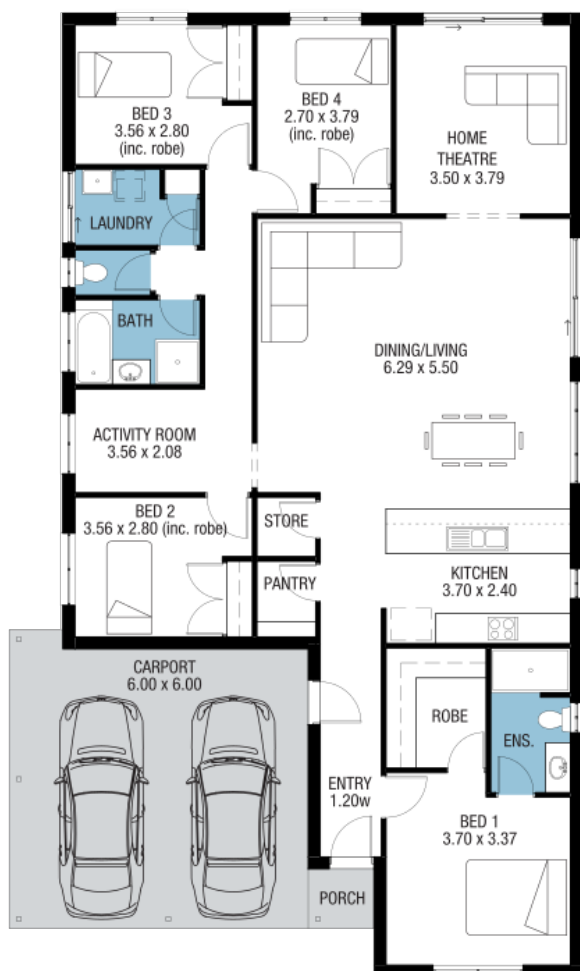
UTAH

FACADE: Frontage Double Garage

01

4 1 2 2

BLOCK SIZE : 375M² HOUSE SIZE : 201M²



PACKAGE INCLUSIONS

- ✓ ***LAND READY AUGUST 2024!!!
- ✓ Another great house & land package bought to you by Jason Keiller selling homes in the north since 2007!
- ✓ This Homes Top 10. (Ask me for a free dishwasher!) * Terms and conditions apply
- ✓ 2.7 Metre ceilings throughout
- ✓ Ducted Ceiling Reverse Cycle heating Cooling
- ✓ Walk in Pantry
- ✓ Walk in robe
- ✓ Ensuite
- ✓ Stainless Steel appliances
- ✓ Colorbond roof
- ✓ Help with Mortgage
- ✓ Help with Buying Process
- ✓ Adelaide's Number One Builder with the Best Buying Power!

Easy

ENQUIRIES: Jason Keiller M: 0451 166 006 E: jasonk@sahousingcentre.com.au

Visit us at sahousingcentre.com.au or call **1300 730 187**

*Conditions apply. Certain elevations may not match the particular floor plan published in this package and, as such, all floor plans and elevations are for illustration purposes only. Land subject to availability. The land referred to in this promotion is not owned by us. We make no representation and, to the extent permissible at law, we disclaim all liability, as to the suitability of the land to build on, or the suitability of any house design, or otherwise. You must satisfy yourself of that by inspection, or by taking professional advice, or otherwise. Pricing is indicative only and based on standard costings. Price may vary depending on selections, engineering, council and utility requirements and adjustments to allowances. All packages subject to final council approval. Alan Hickinbotham Pty Ltd ABN 13 007 567 222, RLA 230557. Construction Services Australia Pty Ltd ABN 99 007 641 787, Building Licence G8969.