

# Home & Land Package

**SA** HOUSING CENTRE

**\$470,113\***

LOT 149 MILL AVENUE  
TWO WELLS

(Liberty)

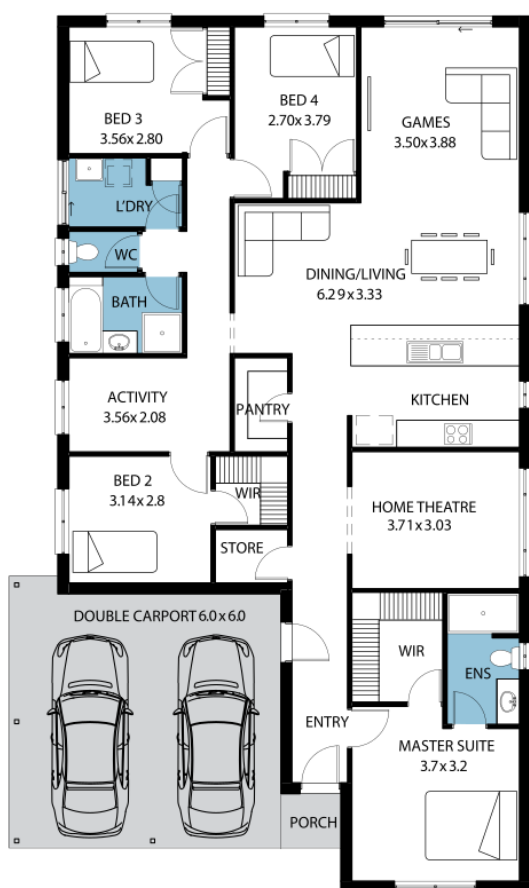
MAINE

FACADE: Frontage Double Garage

06

4 3 2 2

BLOCK SIZE : 438M<sup>2</sup> HOUSE SIZE : 202M<sup>2</sup>



## PACKAGE INCLUSIONS

- ✓ HIGHLY SOUGHT AFTER LIBERTY ESTATE!
- ✓ UNBEATABLE PRICE! \*conditions apply
- ✓ 2.7m ceilings
- ✓ Stainless steel appliances
- ✓ Carpets and timber laminate flooring
- ✓ Milan 1950 high shower screens
- ✓ Ducted heating and cooling
- ✓ Double garage with auto panel lift door
- ✓ Fencing and landscaping
- ✓ Perimeter paving and driveway
- ✓ Rainwater tank
- ✓ Siteworks and footings
- ✓ 25 year structural guarantee

**Easy**

ENQUIRIES: Liane Goldsmith M: 0408 280 055 E: [lianeg@sahousingcentre.com.au](mailto:lianeg@sahousingcentre.com.au)

Visit us at [sahousingcentre.com.au](http://sahousingcentre.com.au) or call **1300 730 187**

\*Conditions apply. Certain elevations may not match the particular floor plan published in this package and, as such, all floor plans and elevations are for illustration purposes only. Land subject to availability. We make no representation and, to the extent permissible at law, we disclaim all liability, as to the suitability of the land to build on, or the suitability of any house design, or otherwise. You must satisfy yourself of that by inspection, or by taking professional advice, or otherwise. Pricing is indicative only and based on standard costings. Price may vary depending on selections, engineering, council and utility requirements and adjustments to allowances. All packages subject to final council approval. Alan Hickinbotham Pty Ltd ABN 13 007 567 222, RLA 230557. Construction Services Australia Pty Ltd ABN 99 007 641 787, Building Licence G8969.