

Home & Land Package

SA HOUSING CENTRE

\$796,610*

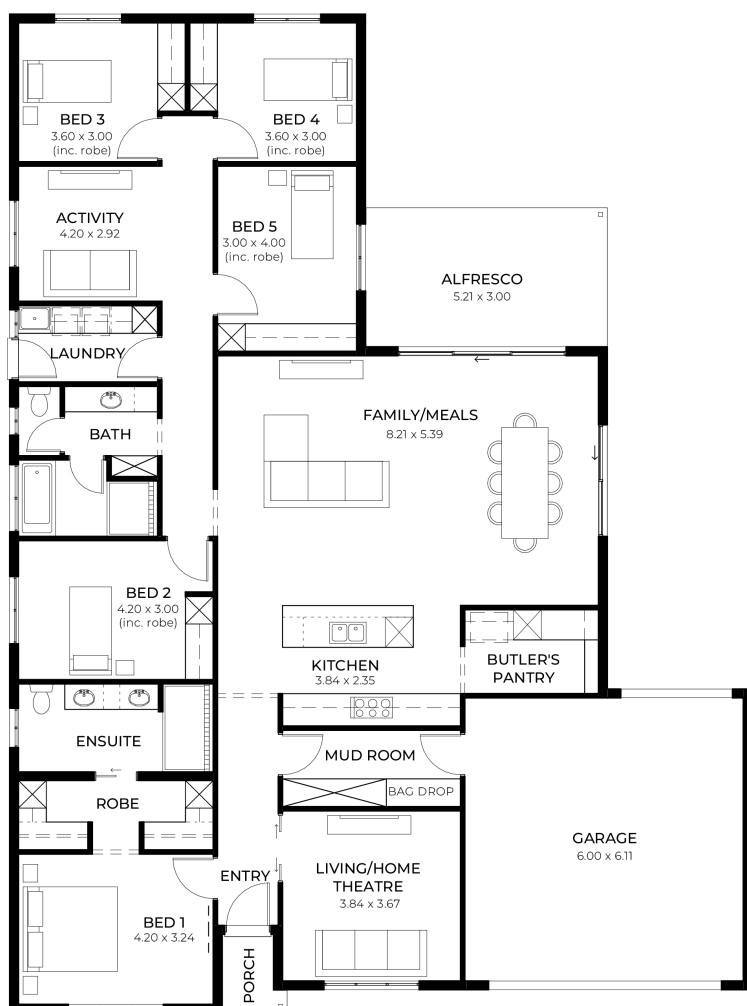
LOT 193 PESCARA WAY
ANGLE VALE

AMBER 5.0

FACADE:

5 3 2 2

BLOCK SIZE : 658M² HOUSE SIZE : 272M²



PACKAGE INCLUSIONS

- ✓ Stunning 5-bedroom design with Butlers pantry
- ✓ Ducted reverse cycle air conditioning with wifi controller
- ✓ 2700mm high ceilings & 2340mm high internal doors + Carpet and Timber flooring
- ✓ Stainless Steel Cooktop, 900mm Oven & Westinghouse Retractable Rangehood
- ✓ 400mm deep overhead cupboards to Kitchen+700mm deep kitchen cupboards
- ✓ Designer joinery handles to kitchen, laundry, bathroom & ensuite
- ✓ Vinyl/mirror sliding robes with drawer units & drawer units to walk-in-robe
- ✓ Clipsal Iconic light switches, television points, data points and double power points
- ✓ Colourbond roof, fascias and gutters & NBN connection
- ✓ Flyscreens to all windows (excludes sliding doors) & Termite barrier treatment to whole house
- ✓ Milan Semi-Framed Shower Screens + 900mm high mirror to ensuite & bath
- ✓ 45 litre inset trough, broom cupboard and bin to laundry
- ✓ 3 month warranty period + 25 year structural guarantee

Easy

Visit us at sahousingcentre.com.au or call **1300 730 187**

ENQUIRIES:

M: E:

*Conditions apply. Certain elevations may not match the particular floor plan published in this package and, as such, all floor plans and elevations are for illustration purposes only. Land subject to availability. The land referred to in this promotion is not owned by us. We make no representation and, to the extent permissible at law, we disclaim all liability, as to the suitability of the land to build on, or the suitability of any house design, or otherwise. You must satisfy yourself of that by inspection, or by taking professional advice, or otherwise. Pricing is indicative only and based on standard costings. Price may vary depending on selections, engineering, council and utility requirements and adjustments to allowances. All packages subject to final council approval. Alan Hickinbotham Pty Ltd ABN 13 007 567 222, RLA 230557. Construction Services Australia Pty Ltd ABN 99 007 641 787, Building Licence G8969.