

# Home & Land Package

# SA HOUSING CENTRE

## \$275,949\*

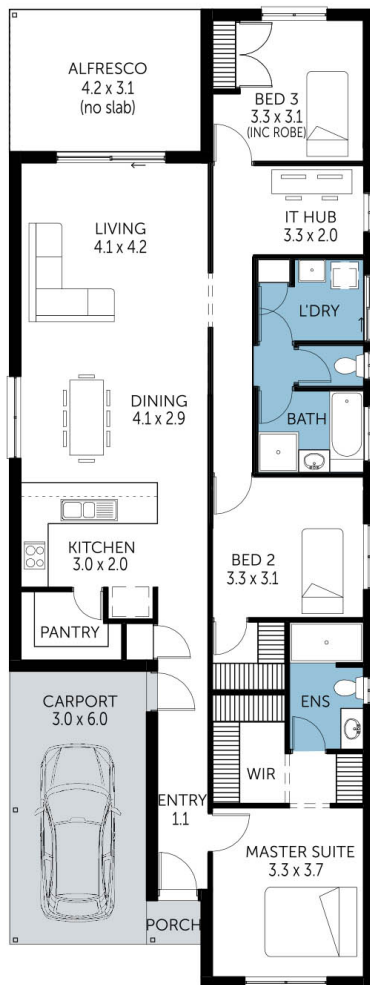
LOT 1003 WHITINGTON ROAD  
DAVOREN PARK

OREGON MK2

FACADE: **Frontage Single Garage** 03

 3  2  2  1

BLOCK SIZE : 298M<sup>2</sup> HOUSE SIZE : 167M<sup>2</sup>



### PACKAGE INCLUSIONS

- ✓ Fully Turn-Key package!
- ✓ \$10,000 House Discount!
- ✓ \$10,000 Playford Alive Bonus Pack
- ✓ Paved Driveway and Perimeter Paths
- ✓ Frontage 3, as pictured
- ✓ 25-degree Roof Pitch
- ✓ Ducted Reverse Cycle Air Conditioning
- ✓ Carpet to Bedrooms
- ✓ Timber Laminate to remainder of flooring
- ✓ Roller Door & Auto Unit to Garage
- ✓ Dishwasher Provision
- ✓ NBN Provision
- ✓ Stormwater Allowance
- ✓ Colorbond Roof
- ✓ Overhead cupboards to Kitchen, including over fridge
- ✓ Westinghouse Retractable Rangehood
- ✓ Robes to all bedrooms included
- ✓ Rainwater Bypass System
- ✓ FREE Milan Semi-Frameless Shower Screens
- ✓ Insulation R 2.5 to External Walls R 5.0 to Ceiling
- ✓ Generous Siteworks and Footings Allowance
- ✓ 3 Months Maintenance
- ✓ 25 Year Structural Guarantee

# Easy

ENQUIRIES: **Dominic Weakley** M: 0449 514 059 E: dominicw@sahousingcentre.com.au

Visit us at **sahousingcentre.com.au** or call **1300 730 187**

\*Conditions apply. Certain elevations may not match the particular floor plan published in this package and, as such, all floor plans and elevations are for illustration purposes only. Land subject to availability. The land referred to in this promotion is not owned by us. We make no representation and, to the extent permissible at law, we disclaim all liability, as to the suitability of the land to build on, or the suitability of any house design, or otherwise. You must satisfy yourself of that by inspection, or by taking professional advice, or otherwise. Pricing is indicative only and based on standard costings. Price may vary depending on selections, engineering, council and utility requirements and adjustments to allowances. All packages subject to final council approval. Alan Hickinbotham Pty Ltd ABN 13 007 567 222, RLA 230557. Construction Services Australia Pty Ltd ABN 99 007 641 787, Building Licence G8969.