

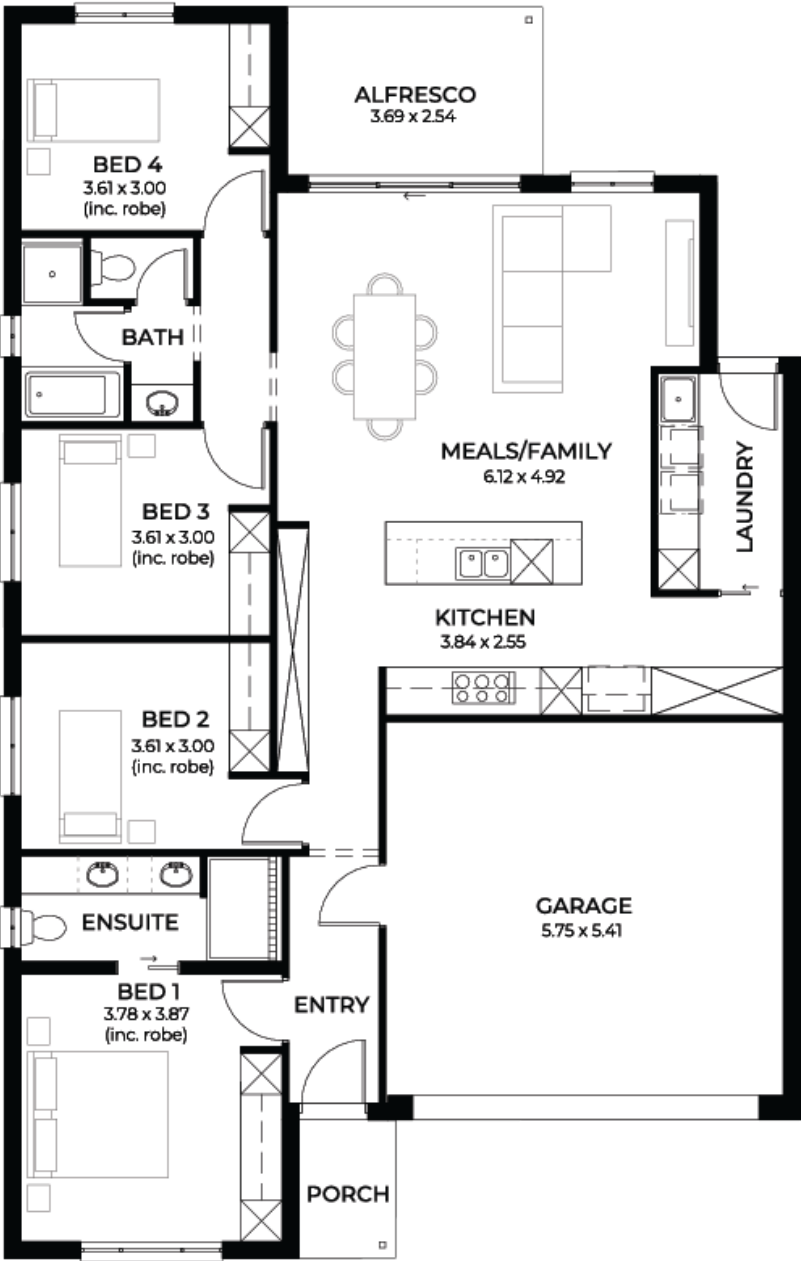
House
and Land
from
\$590,390*

LOT 332
Bouneville Way
Gawler Belt
'Cobalt 3.5'

Lot Size 400.00m²
Design Cobalt 3.5
Block Size 400m²
House Size 183m² / 19.80sqsq
Width 11.50m



4 1 2 2





**Lucky you,
all these
impressive
features are
included with
this home**

Builders promotional discount applied

Liveable Housing Standards with 7
star energy efficiency

Solar power system

2.7m ceiling throughout /25 degree
roof pitch /450mm eaves

2.3m high doors (external and
Internal)

Insulation throughout including R 6.0
to Ceiling

900mm Westinghouse Appliances to
kitchen

Built in robes with mirror finish,
drawers and shelving set

1.95m high Milan Semi-Framed
Shower Screens

45 litre inset trough to laundry with
floorunits and tiling behind

400mm deep Overhead cupboards
and Dishwasher to Kitchen

Auto single span panel to garage

Data based Footing and Site works
allowance

Premium Facade as selected or your
choice, including slab and tiles

Slab and Tiles to Alfresco as per plan

3 Month Maintenance and 25 Year
Structural Guarantee