

House and Land

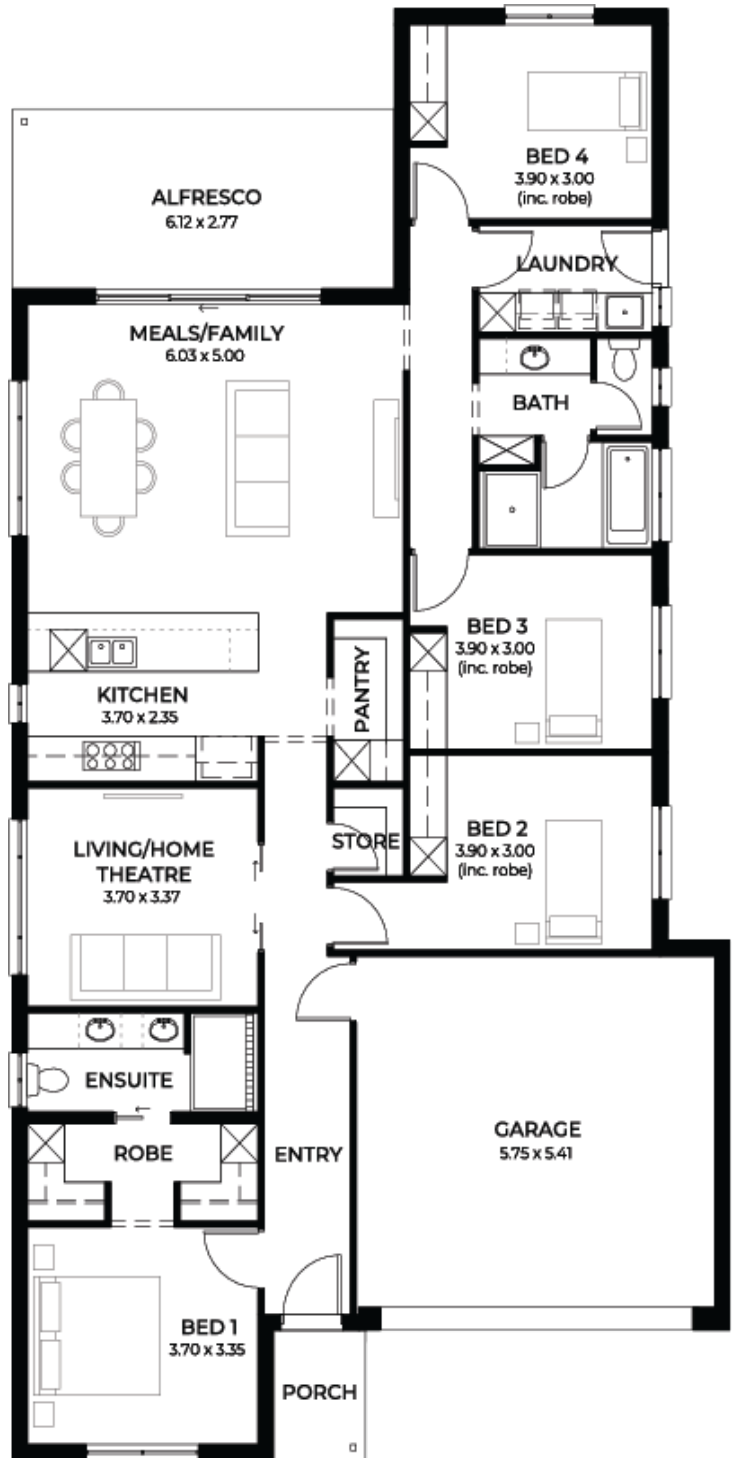
from **\$667,158***

LOT 6
Aravalle Way
Gawler Belt
'Teal 3.5'

Lot Size 525.00m²
Design Teal 3.5
Block Size 525m²
House Size 221m² / 23.84sqgs
Width 11.50m



 4
  2
  2
  2



SA HOUSING CENTRE

Rick Chen 0434 619 975

rickc@sahousingcentre.com.au sahousingcentre.com.au

* Terms and Condition's apply. For full details go to sahousingcentre.com.au/terms-and-conditions/



**Lucky you,
all these
impressive
features are
included with
this home**

Builders promotional discount applied

Titled block, ready to build

Liveable Housing Standards with 7 star energy efficiency

Solar power system

2.7m ceiling throughout /25 degree roof pitch /450mm eaves

2.3m high doors (external and Internal)

Insulation throughout including R 6.0 to Ceiling

900mm Westinghouse Appliances to kitchen

Built in robes with mirror finish, drawers and shelving set

1.95m high Milan Semi-Framed Shower Screens

45 litre inset trough to laundry with floorunits and tiling behind

400mm deep Overhead cupboards and Dishwasher to Kitchen

Auto single span panel to garage

Data based Footing and Site works allowance

Premium Facade as selected or your choice, including slab and tiles

Slab and Tiles to Alfresco as per plan

Flooring included (Carpets to rooms/Timber laminate to living, kitchen)

Ducted reverse cycle air-conditioning with WIFI control

3 Month Maintenance and 25 Year Structural Guarantee