

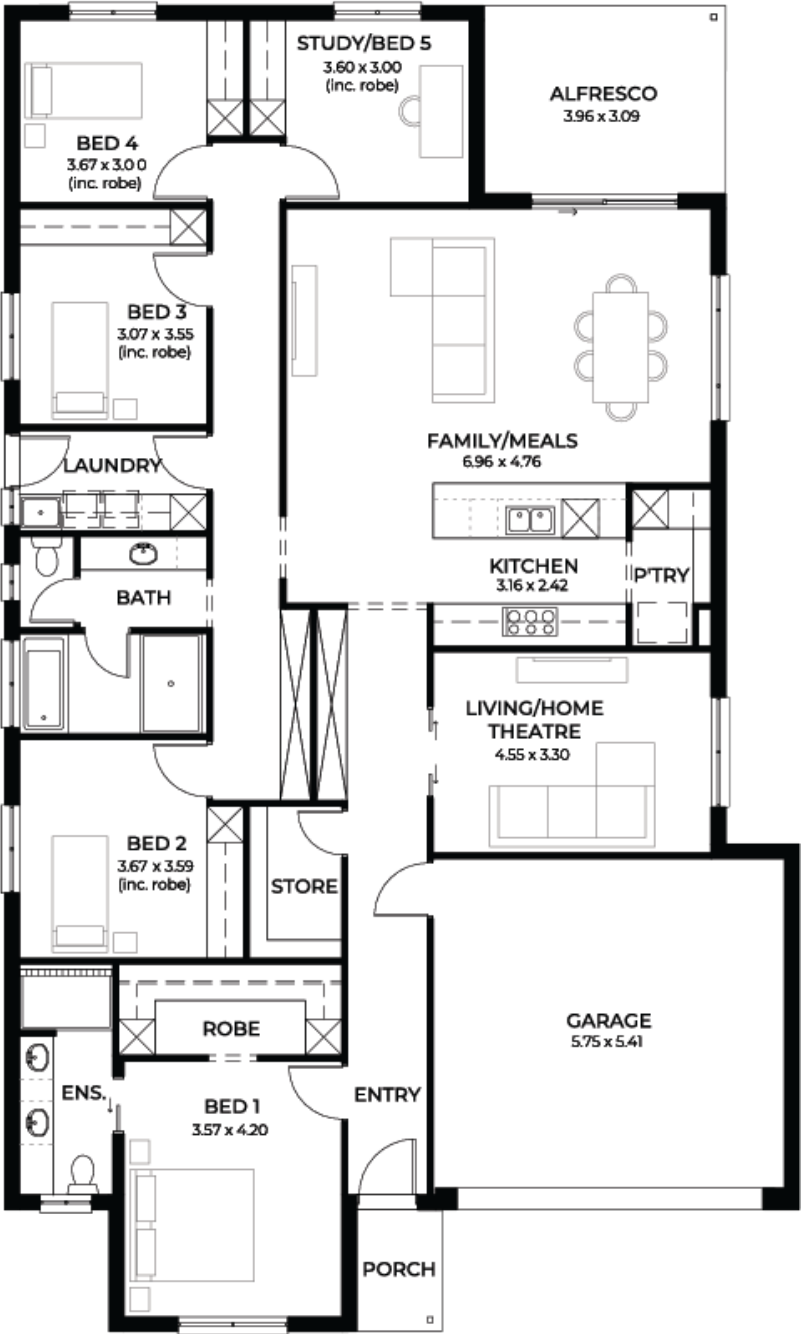
House  
and Land  
from  
\$693,050\*

LOT 234  
Ashbourne Drive  
Gawler Belt  
'Cerulean 3.5'

Lot Size 516.00m<sup>2</sup>  
Design Cerulean 3.5  
Block Size 516m<sup>2</sup>  
House Size 251m<sup>2</sup> / 27.03sqsq  
Width 13.00m



5 2 2 2





**Lucky you,  
all these  
impressive  
features are  
included with  
this home**

Builders promotional discount applied

Liveable Housing Standards with 7  
star energy efficiency

Solar power system

2.7m ceiling throughout /25 degree  
roof pitch /450mm eaves

2.3m high doors (external and  
Internal)

Insulation throughout including R 6.0  
to Ceiling

900mm Westinghouse Appliances to  
kitchen

Built in robes with mirror finish,  
drawers and shelving set

45 litre inset trough to laundry with  
floorunits and tiling behind

400mm deep Overhead cupboards  
and Dishwasher to Kitchen

Auto single span panel to garage

Data based Footing and Site works  
allowance

Premium Facade as selected or your  
choice, including slab and tiles

Slab and Tiles to Alfresco as per plan

Flooring included (Carpets to  
rooms/Timber laminate to living,  
kitchen)

Ducted reverse cycle air-conditioning  
with WIFI control

3 Month Maintenance and 25 Year  
Structural Guarantee