

House and Land

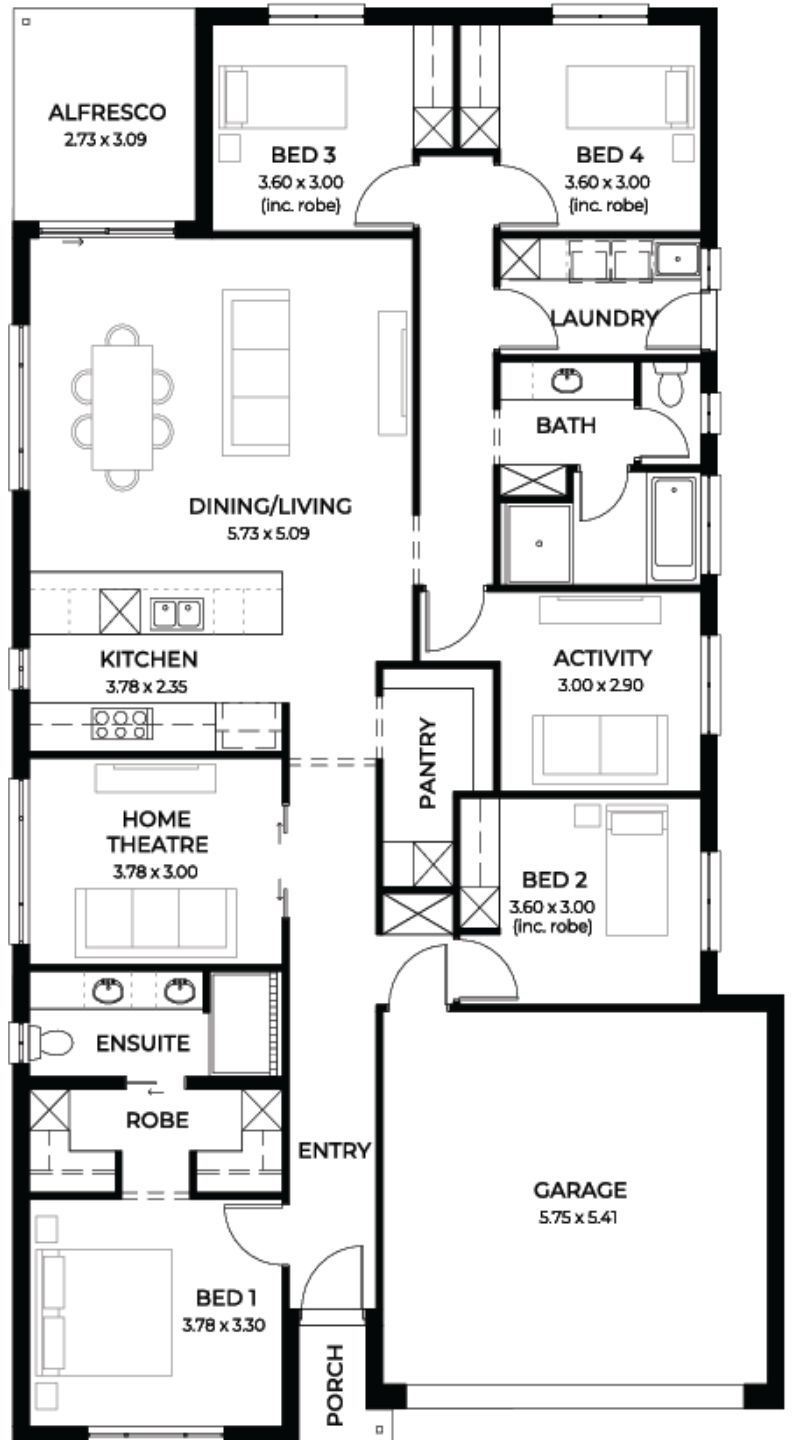
from **\$672,130***

LOT 13
Irvine Drive
Gawler Belt
'Burgundy 5.0'

Lot Size 702.00m²
Design Burgundy 5.0
Block Size 702m²
House Size 221m² / 23.88sq
Width 11.50m



 4
  3
  2
  2





**Lucky you,
all these
impressive
features are
included with
this home**

Great family design with titled block,
ready to build

Builders promotional discount applied

NCC Liveable Housing Standards with
7 star energy efficiency

Solar power system

2.7m ceiling throughout /25 degree
roof pitch /450mm eaves

2.3m high doors (external and
Internal)

Insulation throughout including R 6.0
to Ceiling

900mm Westinghouse Appliances to
kitchen

Built in robes with mirror finish,
drawers and shelving set

1.95m high Milan Semi-Framed
Shower Screens

45L inset trough to laundry with
floorunits and tiling behind

400mm deep Overhead cupboards
and Dishwasher to Kitchen

Auto single span panel to garage

Data based Footing and Site works
allowance

Premium Facade as selected or your
choice, including slab and tiles

3 Month Maintenance and 25 Year
Structural Guarantee