

House and Land

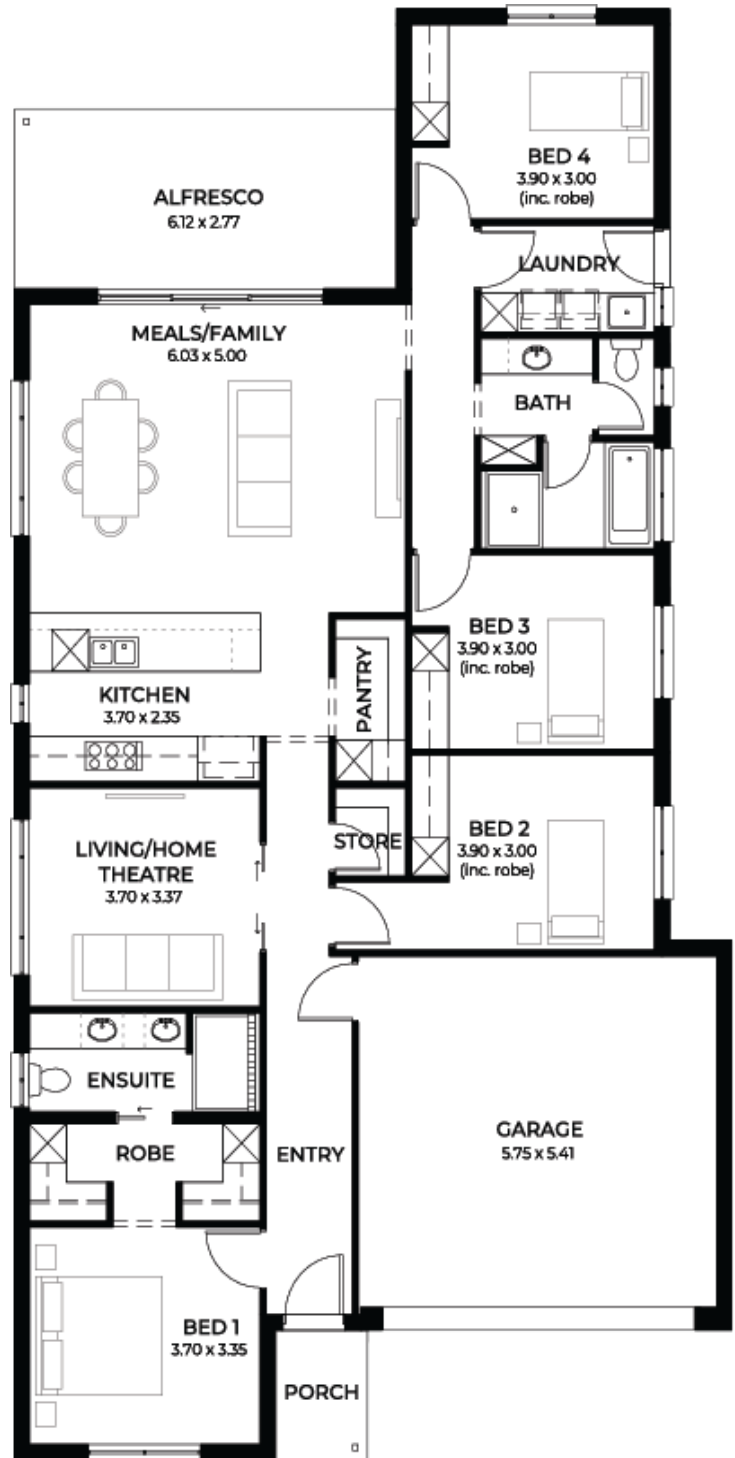
from **\$580,256***

LOT 6889
Pickworth Crescent
Munno Para
'Teal 3.5'



Lot Size 375.00m²
Design Teal 3.5
Block Size 375m²
House Size 221m² / 23.84sqgs
Width 11.50m

 4
  2
  2
  2





**Lucky you,
all these
impressive
features are
included with
this home**

Builders promotional discount applied

New Liveable Housing Standards with
7 star energy efficiency

All electrical pack with solar power
system

2.7m ceiling throughout /25 degree
roof pitch /450mm eaves

2.3m high doors (external and
Internal)

Insulation throughout including R 6.0
to Ceiling

900mm Westinghouse Appliances to
kitchen

Built in robes with mirror finish,
drawers and shelving set

Tiled ledge to showers with 1.95m
high Milan Semi-Framed Shower
Screens

45 litre inset trough to laundry with
floorunits and tiling behind

400mm deep Overhead cupboards
and Dishwasher to Kitchen

Auto single span panel to garage

Data based Footing and Site works
allowance

Premium Facade as selected or your
choice, including slab and tiles

Ducted reverse cycle air-conditioning
with WIFI control

3 Month Maintenance and 25 Year
Structural Guarantee