

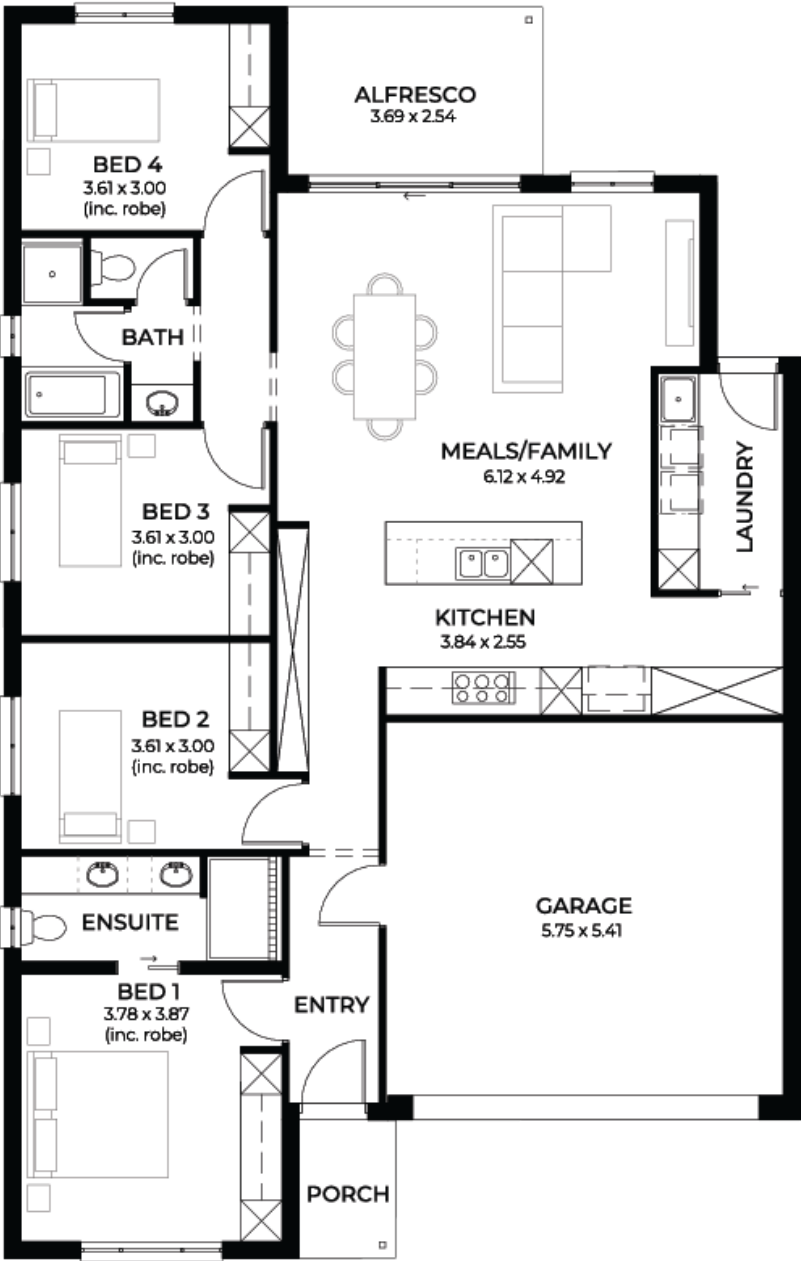
House
and Land
from
\$699,000*

LOT 13
Irvine Drive Gawler Belt
Gawler Belt
'Cobalt 3.5'

Lot Size 709.00m²
Design Cobalt 3.5
Block Size 709m²
House Size 183m² / 19.80sq
Width 11.50m



4 1 2 2





**Lucky you,
all these
impressive
features are
included with
this home**

Titled & ready to build on, spacious
705m2 allotment

A stones throw from The 'Lakehouse'

Level 1 premium package included

Generous footings & site works
allowance

Ducted reverse cycle air conditioner

Tier 3 timber laminate flooring or up
upgrade to tiles

Solid surface benchtop to kitchen,
LED strip lighting to cooktop run

Clark Polar double bowl (undermount)
kitchen sink

Tiled ledges & recessed kickers to
bathroom & ensuite

4kW solar system & 7 star energy
rating

900mm Westinghouse Appliances

Feature mosaic splashback tiles to
kitchen

NCC compliant

2700mm ceilings with 2340mm floor
heights