

House and Land

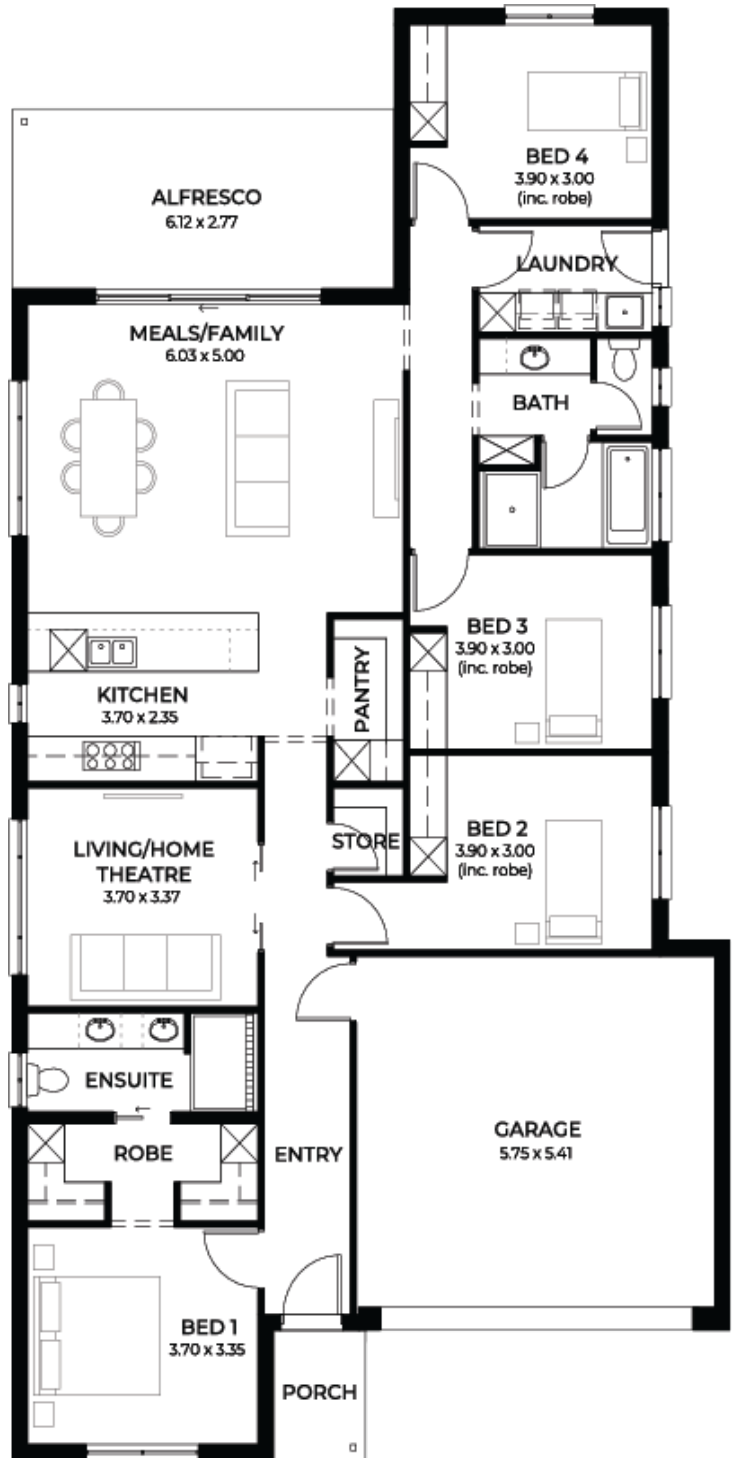
from **\$587,165***

LOT 407
Wilbury Street
Gawler Belt
'Teal 3.5'

Lot Size 375.00m²
Design Teal 3.5
Block Size 375m²
House Size 221m² / 23.84sqs
Width 11.50m



 4
  2
  2
  2





**Lucky you,
all these
impressive
features are
included with
this home**

Builders promotional discount applied

New Liveable Housing Standards with
7 star energy efficiency

Solar power system

2.7m ceiling throughout / 25 degree
roof pitch / 450mm eaves

2.3m high doors (external and internal)

Insulation throughout including R 6.0
to ceiling

900mm Westinghouse appliances to
kitchen

Built in robes with mirror finish,
drawers and shelving set

Tiled ledge to showers with 1.95m
high Milan semi-framed shower
screens

45 litre inset trough to laundry with
floorunits and tiling behind

400mm deep overhead cupboards and
dishwasher to kitchen

Auto single span panel to garage

Data based footing and site works
allowance

Premium facade as selected or your
choice, including slab and tiles

Slab and tiles to alfresco as per plan

Flooring included (Carpets to
rooms/Timber laminate to living,
kitchen)

Ducted reverse cycle air-conditioning
with WIFI control

3 Month fast track process

3 Month Maintenance

25 Year Structural Guarantee