

# House and Land

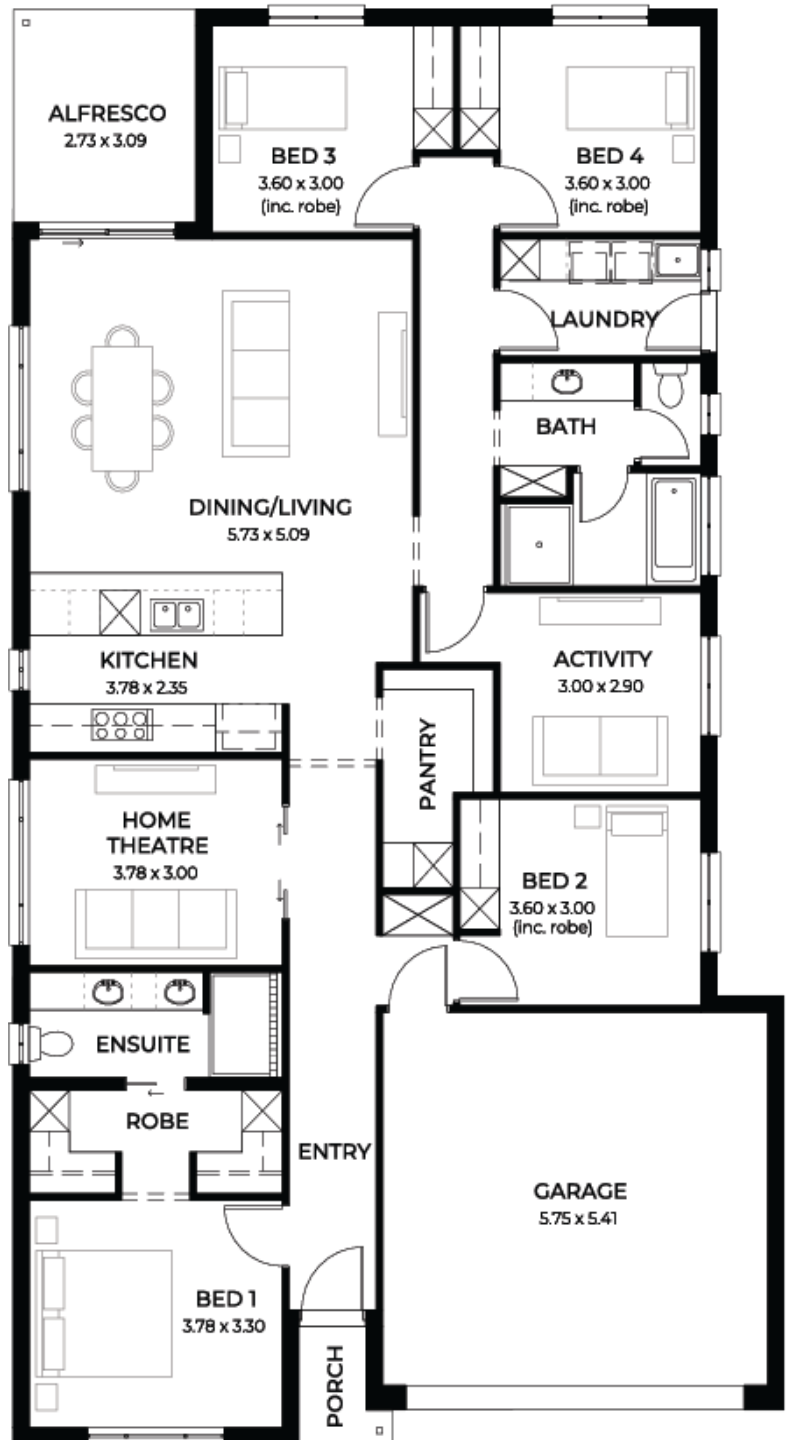
from **\$680,000\***

LOT 1  
New Rd  
Andrews Farm  
'Burgundy 5.0'

Lot Size 375.00m<sup>2</sup>  
Design Burgundy 5.0  
Block Size 375m<sup>2</sup>  
House Size 221m<sup>2</sup> / 23.88sqgs  
Width 11.50m



 4
  3
  2
  2





**Lucky you,  
all these  
impressive  
features are  
included with  
this home**

Move in ready floorplan everything included!

Close proximity to train bus & shops

Block nearby estate park & walking trail

Premium range front elevation

Kitchen complete w/ overheads, pot drawers, 900mm appliances & dishwasher

butlers pantry w/ undermount mic provision, benchtop, shelving, plumbed fridge point

level 3 laundry w/ bench, linen closet, 45l sink + cupboard & overheads

drawers to all wardrobes, double shelf & rail, mirror sliding doors

ens & bathrooms w/ shower ledges, heat lamps, XL mirror & vanity drawers

Level 3 flooring upgrade timber + carpets

Air-con fully ducted system H+C w/ wifi

Upgraded 2.7m ceilings w/ Trilock door bolt

Timber frame brick external fully insulated

Finance with your broker OR Ours

Fully turn key options available for paved driveway, perimeter & stormwater

Footings price included to engineer specs

All services electrical water NBN connected

Solar panel system + 7 star energy rating\*

Fast track simple process to home building

\$17k discount INC for limited time only!