

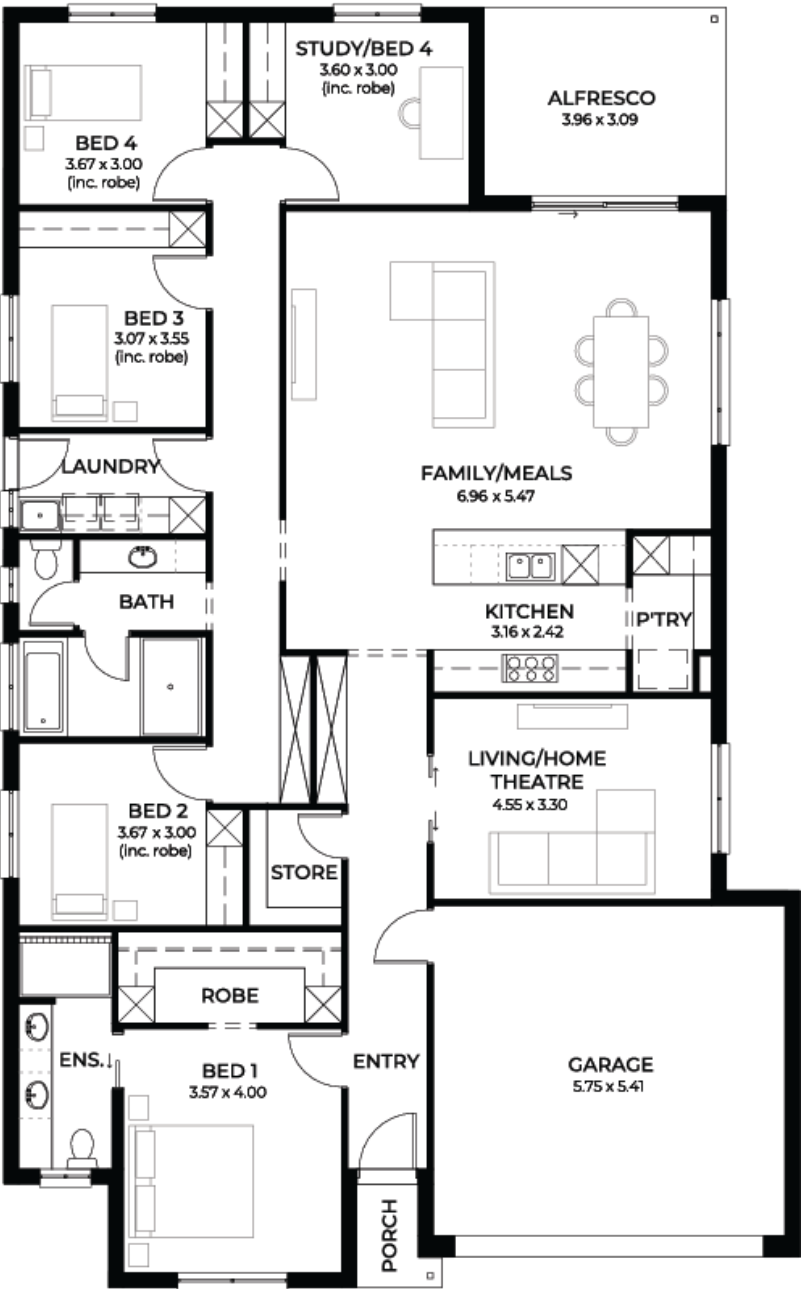
House
and Land
from
\$789,620*

LOT 114
Sage Court
Mount Barker
'Cerulean 5.0'

Lot Size 450.00m²
Design Cerulean 5.0
Block Size 450m²
House Size 249m² / 26.83sqs
Width 13.00m



5 2 2 2





**Lucky you,
all these
impressive
features are
included with
this home**

New Home Designs Launch

7 Star Energy Rating Compliant

6.6kW Solar Panel System

2.7m ceilings throughout and
upgraded 2340mm doors

Walk-in robe to master and sliding
robes to bedrooms

Ducted Reverse Cycle Air
Conditioning

Bedroom carpet & timber laminate
living

Westinghouse 900mm stainless steel
appliances to kitchen

Designer fixtures to kitchen &
bathrooms

Alfresco with slab & tile

Tiled shower ledges

Single panel lift door to garage

Full footings allowance and site costs
included

Multiple frontage design choices,
option 7 selected

Insulation, including R6.0 grade to
ceilings

Wind speed N3 safety compliant

25 Year Structural Guarantee

****Plus many more standard
inclusions****