

House and Land

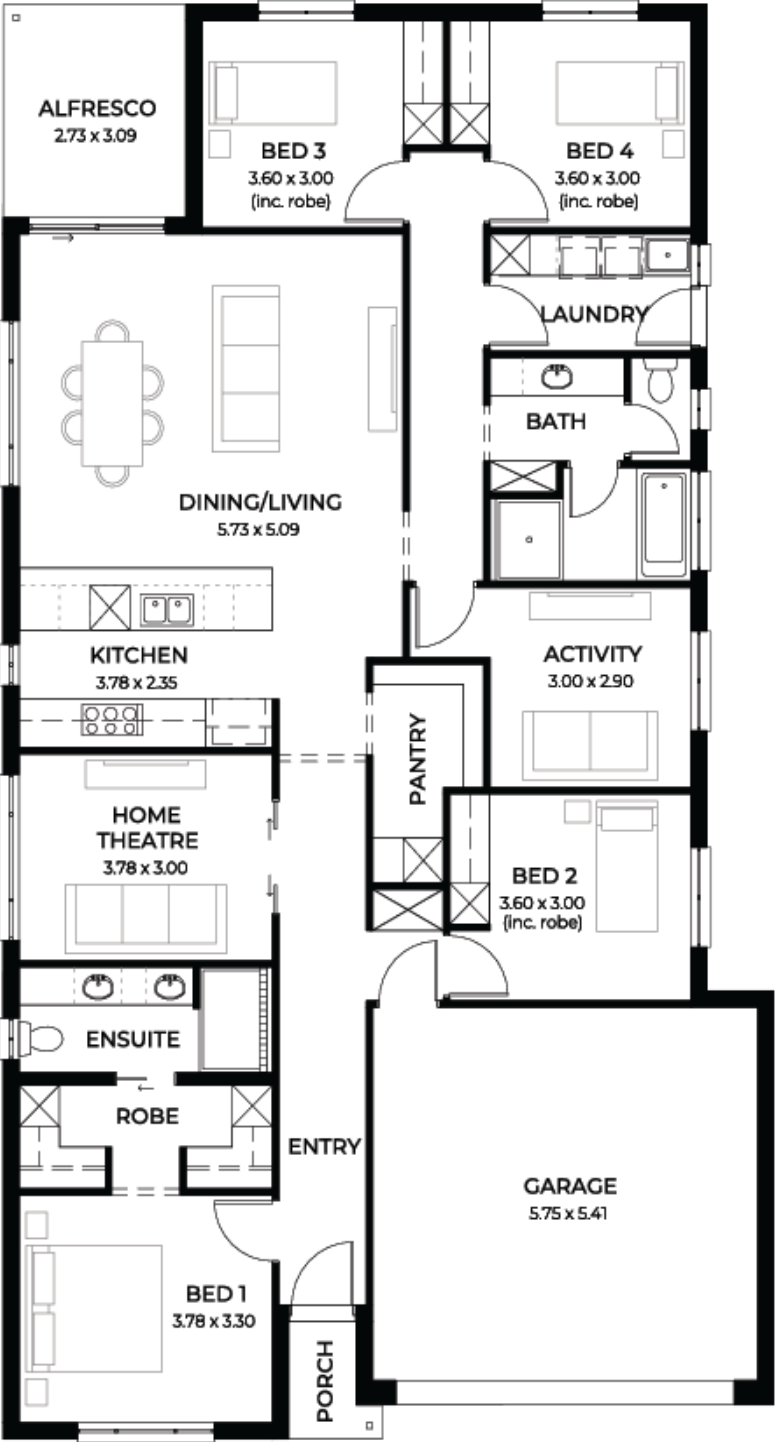
from
\$671,185*

LOT 83
Matthew Road
Angle Vale
'Burgundy 5.0'

Lot Size 439.00m²
Design Burgundy 5.0
Block Size 439m²
House Size 221m² / 23.88sq
Width 11.50m



4 3 2 2





**Lucky you,
all these
impressive
features are
included with
this home**

Call now to secure Titled land – limited allotments!!

Finance options available – call now to book an appointment

Frontage 7 (as pictured) or choice of other façades

Double garage

Ducted reverse cycle air conditioning with wifi controller + 6.6kW solar system

Microwave & dishwasher provision + plumbed water point for fridge

2700mm high ceilings & 2340mm high internal doors + carpet and timber flooring

Stainless steel cooktop, 900mm oven & Westinghouse retractable rangehood

400mm deep overhead cupboards to kitchen with finger grip + 700mm deep kitchen cupboards

Designer joinery handles to kitchen, laundry, bathroom and ensuite, finger grip to overheads

Vinyl/mirror sliding robes with drawer units & drawer units to walk-in-robe

2 heat light combination exhaust fan to bathroom and ensuite

Clipsal iconic light switches, television points, data points and double power points

Bela round internal door handles + Kip sink mixer with feature mosaic splashback tiles to kitchen

25 degree roof pitch with 450mm eaves + colorbond roof, fascias and gutters & NBN connection

Milan semi-framed shower screens + 900mm high mirror full length of vanity to ensuite & bath

45L inset trough, broom cupboard and bin to laundry

Insulation R2.5 to external walls R5.0 to ceiling and internal walls

Generous siteworks and footings allowance

3 month warranty period + 25 year structural guarantee