

# House and Land

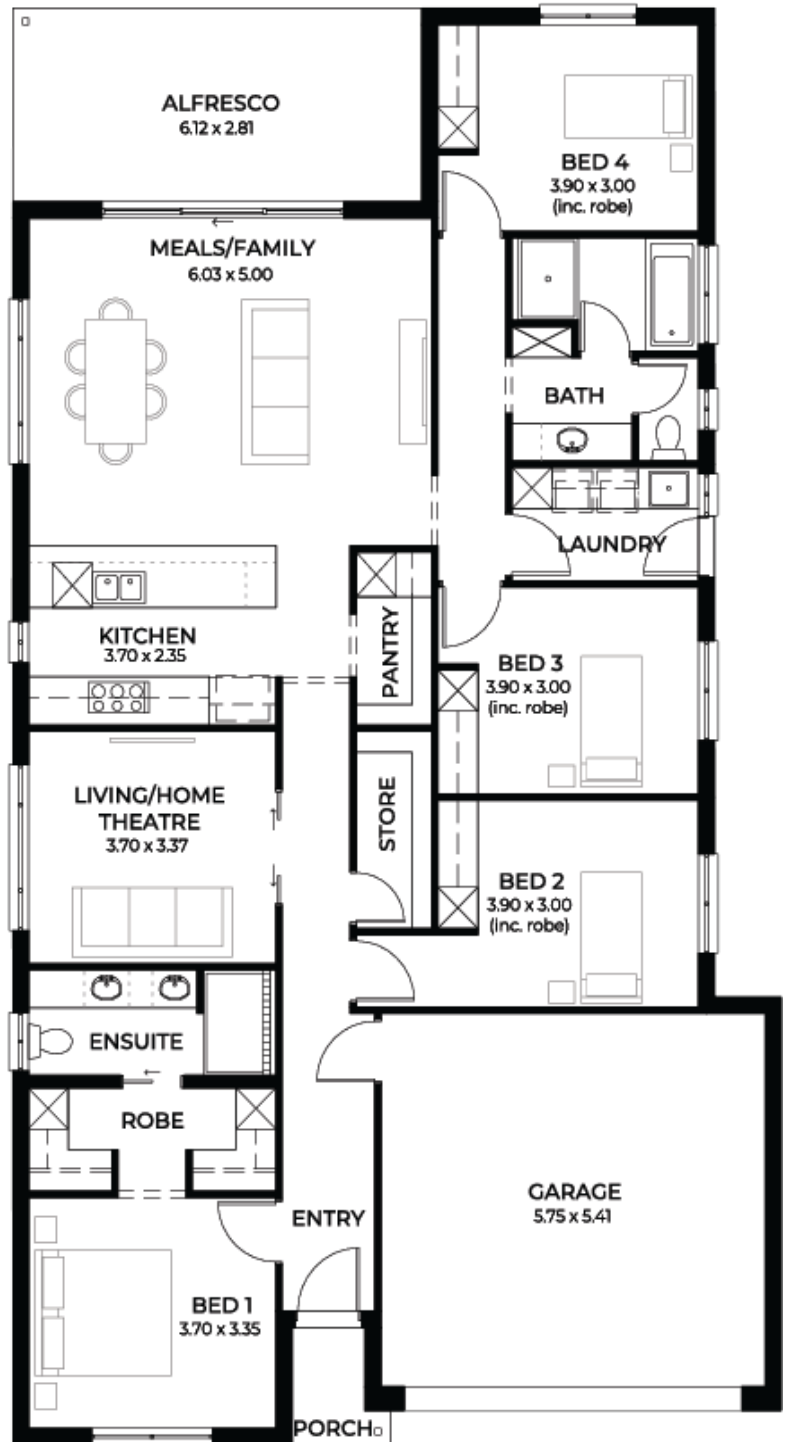
from  
**\$576,634\***

LOT 3  
Wentworth Parade  
Hindmarsh Island  
'Teal 5.0'

Lot Size 568.00m<sup>2</sup>  
Design Teal 5.0  
Block Size 568m<sup>2</sup>  
House Size 222m<sup>2</sup> / 23.94sqgs  
Width 11.50m



 4  2  2  2



**SA** HOUSING  
CENTRE

**Chaise McCardle 0405 114 478**

chaisem@sahousingcentre.com.au [sahousingcentre.com.au](http://sahousingcentre.com.au)

\* Terms and Condition's apply. For full details go to [sahousingcentre.com.au/terms-and-conditions/](http://sahousingcentre.com.au/terms-and-conditions/)



**Lucky you,  
all these  
impressive  
features are  
included with  
this home**

Titled land ready to build on now!! Be quick to receive \$30k in total build discount for our current builders promotion.

- Brand new fast tracked plans (start building your new home sooner)
- 2.7m ceilings with upgraded door heights throughout
- Alternative floor plans and facades available (priced and pictured is the Teal 5 with facade 4)
- Selections and colours included in the price
- Tiled ledges to both showers

- 900mm cooking appliances, overheads, walk in pantry and free dishwasher

- Alfresco under the main roof with slab and tiles

- Ducted heating and cooling throughout

- Timber laminate flooring with carpets to bedrooms and home theatre

- All joinery included

- 25 year structural guarantee, 3 month maintenance period and more!