

House and Land

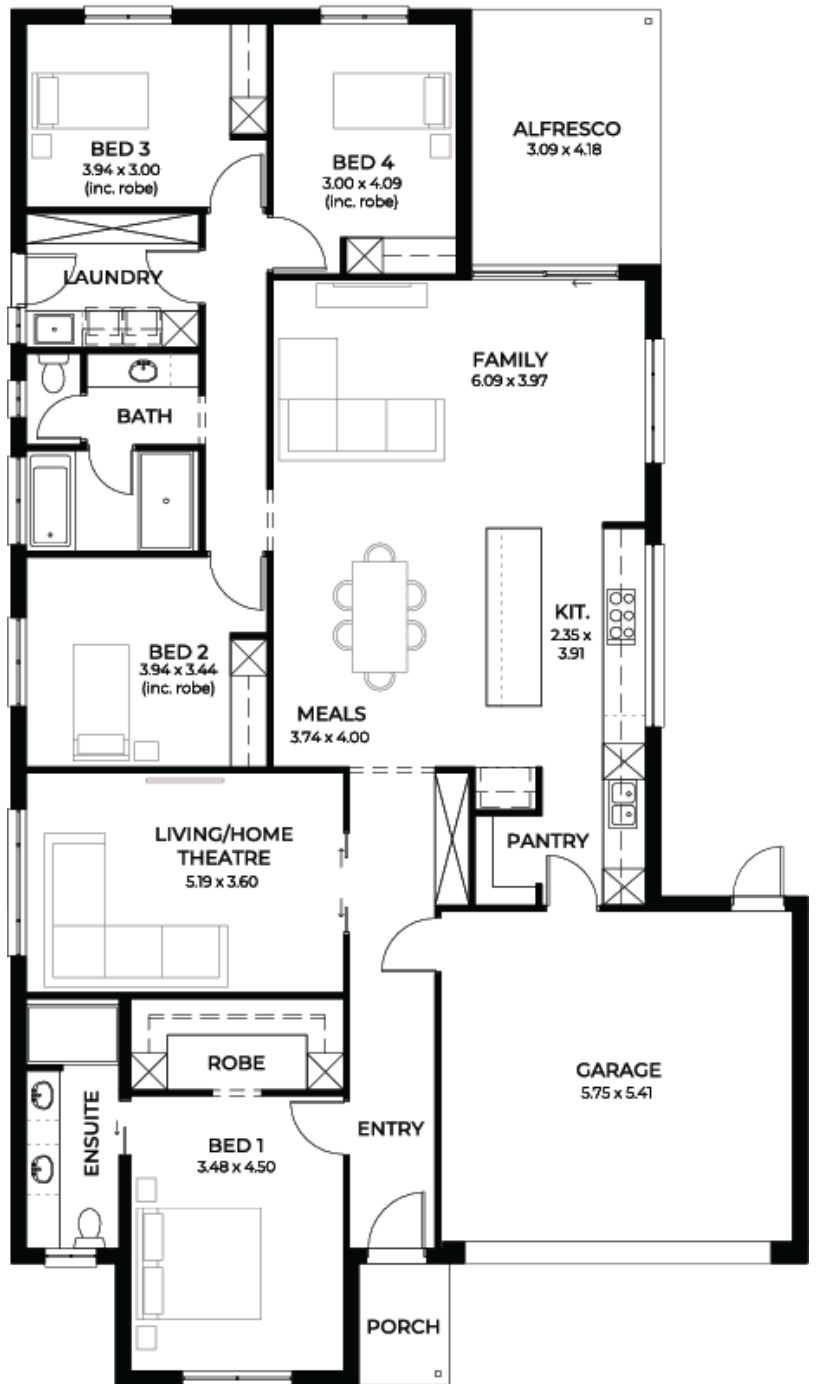
from **\$730,000***

LOT 7
New Road
Nuriootpa
'Cyan 3.5'

Lot Size 1000.00m²
Design Cyan 3.5
Block Size 1000m²
House Size 242m² / 26.11sq
Width 13.00m



 4
  2
  2
  2





**Lucky you,
all these
impressive
features are
included with
this home**

Rare block in upcoming Barossa
Nuriootpa release

Titled soon - move in before Christmas
2025!!

Block nearby estate park & walking
trail

Premium range brick & render

Customisable style & colour schemes

Solar panel system + 7 star energy
rating

Kitchen complete with overheads, pot
drawers, 900mm appliances, chrome
or black mixer tap, mosaic splashback
& dishwasher - optional stone upgrade

Butlers pantry with microwave
provision, drawers, benchtop,
shelving, plumbed fridge point

Laundry level 3 with bench, linen
closet, 45L sink + cupboard &
overheads

Mirror sliding doors to all wardrobes,
double shelf & rail, 4x drawers

Ensuite & bathrooms with shower
ledges, heat lamps, large mirror &
vanity drawers

Flooring upgrade level 3 timber +
carpets

Air conditioner fully ducted system (hot
& cold) with wifi

Upgraded 2.7m ceilings with trilock
door bolt & all doors 2.4m internal

Timber frame brick external fully
insulated for maximum sound proofing
& comfort in all rooms

Finance with your broker OR ours

Full turn-key options available for
paved driveway, perimeter &
stormwater - fencing by owner

Footings price fixed to engineer specs

All services electrical water NBN
connected

Fast track simple process to home
building

\$17k discount included for limited time
only!