

House and Land

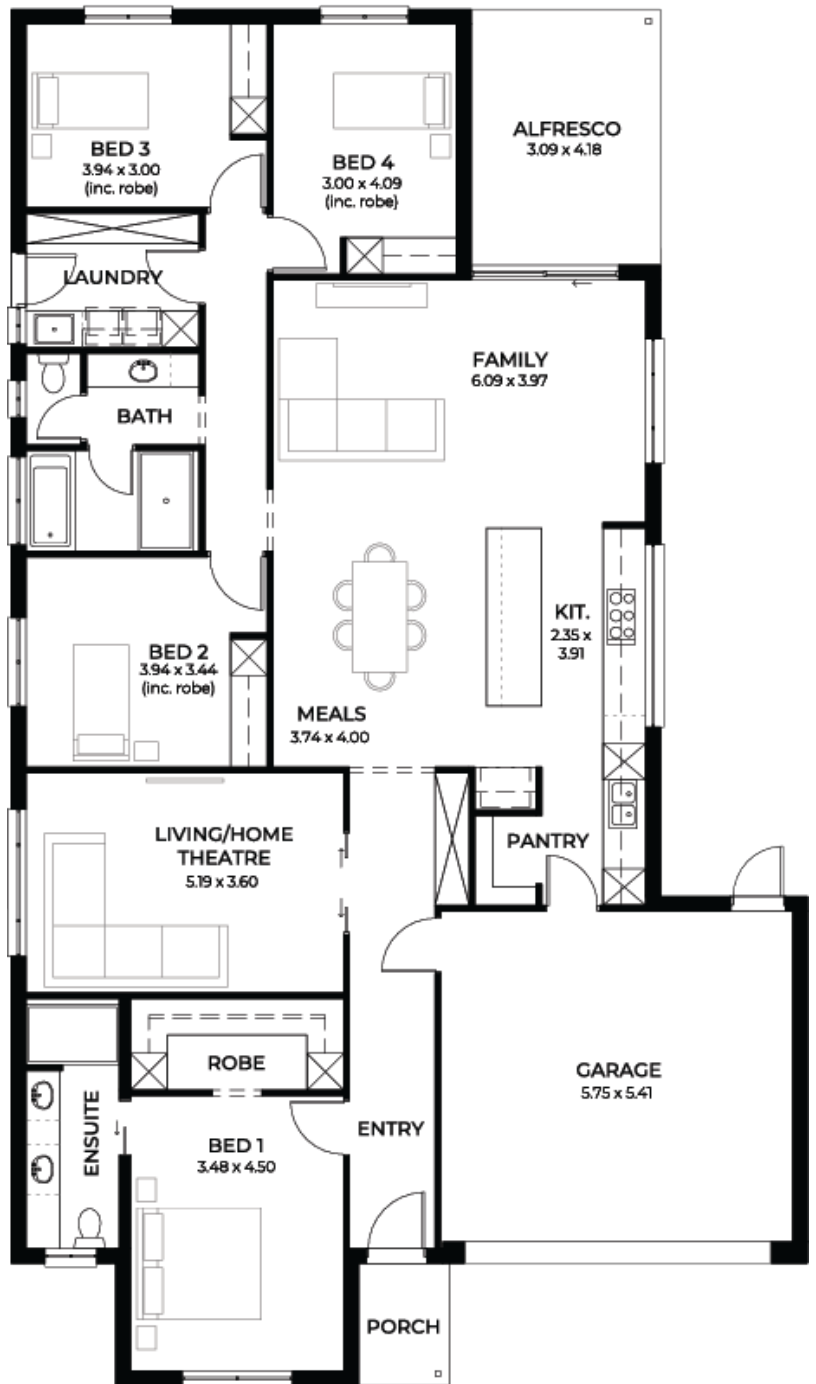
from **\$716,500***

LOT 21
Stephmarie Road
Angle Vale
'Cyan 3.5'

Lot Size 486.00m²
Design Cyan 3.5
Block Size 486m²
House Size 242m² / 26.11sq
Width 13.00m



 4
  2
  2
  2





**Lucky you,
all these
impressive
features are
included with
this home**

SPECIAL \$15K discount on ready to build land

New livable housing standards with 7 star energy efficiency

Solar power system 6.6kW

2.7m ceiling throughout / 25 degree roof pitch / 450mm eaves

2.3m high doors, external and internal

Insulation throughout including R6.0 to ceiling

900mm Westinghouse appliances to kitchen

Built-in robes with mirror finish, drawers and shelving set

Tiled ledge to showers 1.95m high

Milan semi-framed shower screens

45 litre inset trough to laundry with floor units and tiling behind

400mm deep overhead cupboards and dishwasher to kitchen

Auto single span panel to garage

Data-based footing and site works allowance

Premium facade as selected or your choice, including slab and tiles

Slab and tiles to alfresco as per plan

Flooring included, carpets to rooms and timber laminate to living, kitchen

Ducted reverse cycle air-conditioning with Wi-Fi control Android based

3 month fast track process

3 month maintenance

25 year structural guarantee

Contact Guru Singh for further information