

House and Land

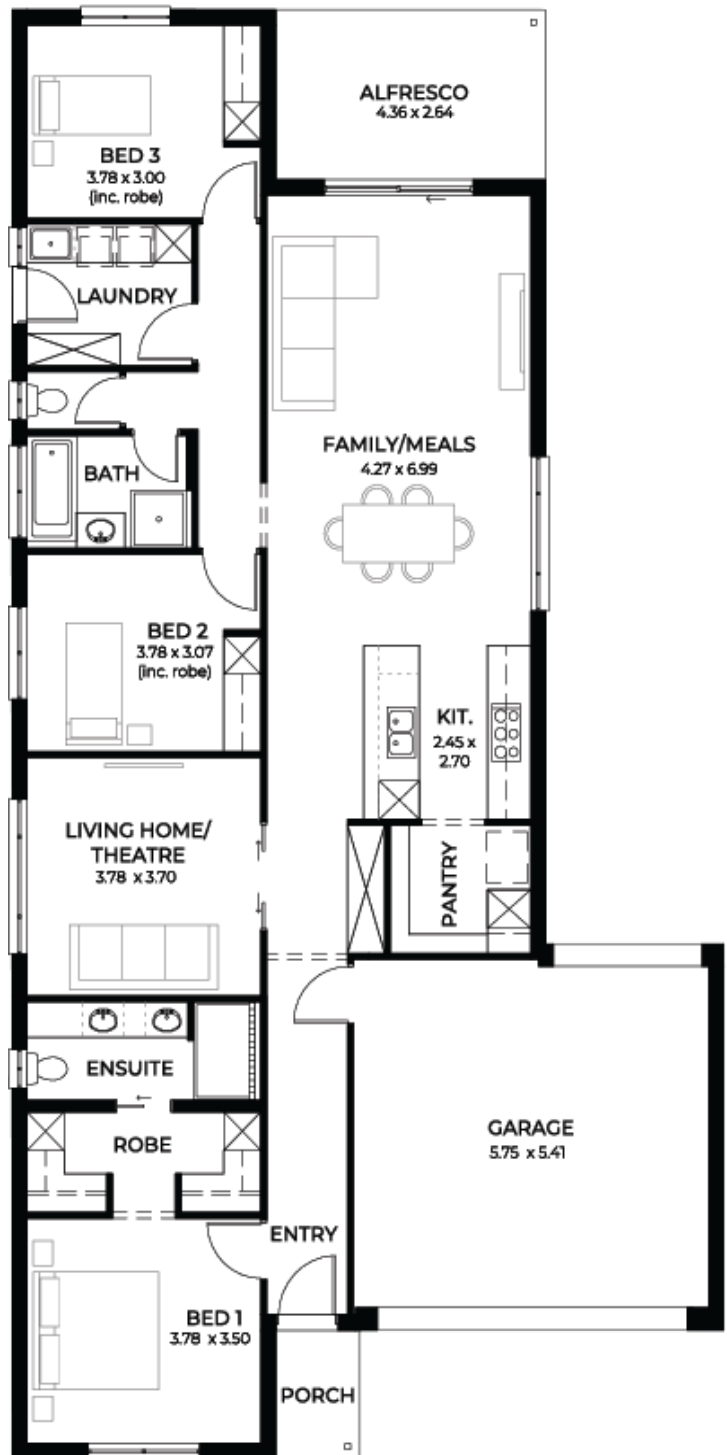
from **\$610,000***

LOT 22
New Street
Gawler Belt
'Coral 3.5'

Lot Size 375.00m²
Design Coral 3.5
Block Size 375m²
House Size 205m² / 22.09sqgs
Width 11.50m



 3
  2
  2
  2





**Lucky you,
all these
impressive
features are
included with
this home**

Rare block in upcoming Playford Alive release

Titles 2026 - 30 week build time guarantee

Block nearby estate park & walking trail

Premium range brick & render customisable style & colour schemes

Solar panel system + 7 star nergy rating

Kitchen complete with overheads, pot drawers, 900mm appliances, chrome or black mixer tap, mosaic splashback & dishwasher - optional stone upgrade

Butlers pantry with Microwave provision, drawers, benchtop, shelving, plumbed fridge point

Laundry Level 3 with bench, linen closet, 45l sink + cupboard & overheads

Mirror sliding doors to all wardrobes, double shelf & rail, 4x drawers

Ens & bathrooms with shower ledges, heat lamps, XL mirror & vanity drawers

Flooring upgrade Level 3 timber + carpets

Air con fully ducted system H+C w/ Wifi

Upgraded 2.7m ceilings with Trilock door bolt & all doors 2.4m internal

Timber frame brick external fully insulated for maximum sound proofing & comfort in all rooms

Finance with your broker OR ours

Fully turn key options available for paved driveway, perimeter & stormwater - Fencing by owner

Footings price fixed to engineer specs

All services electrical water NBN connected

Fast Track simple process to home building

\$17k discount INC for limited time only!