

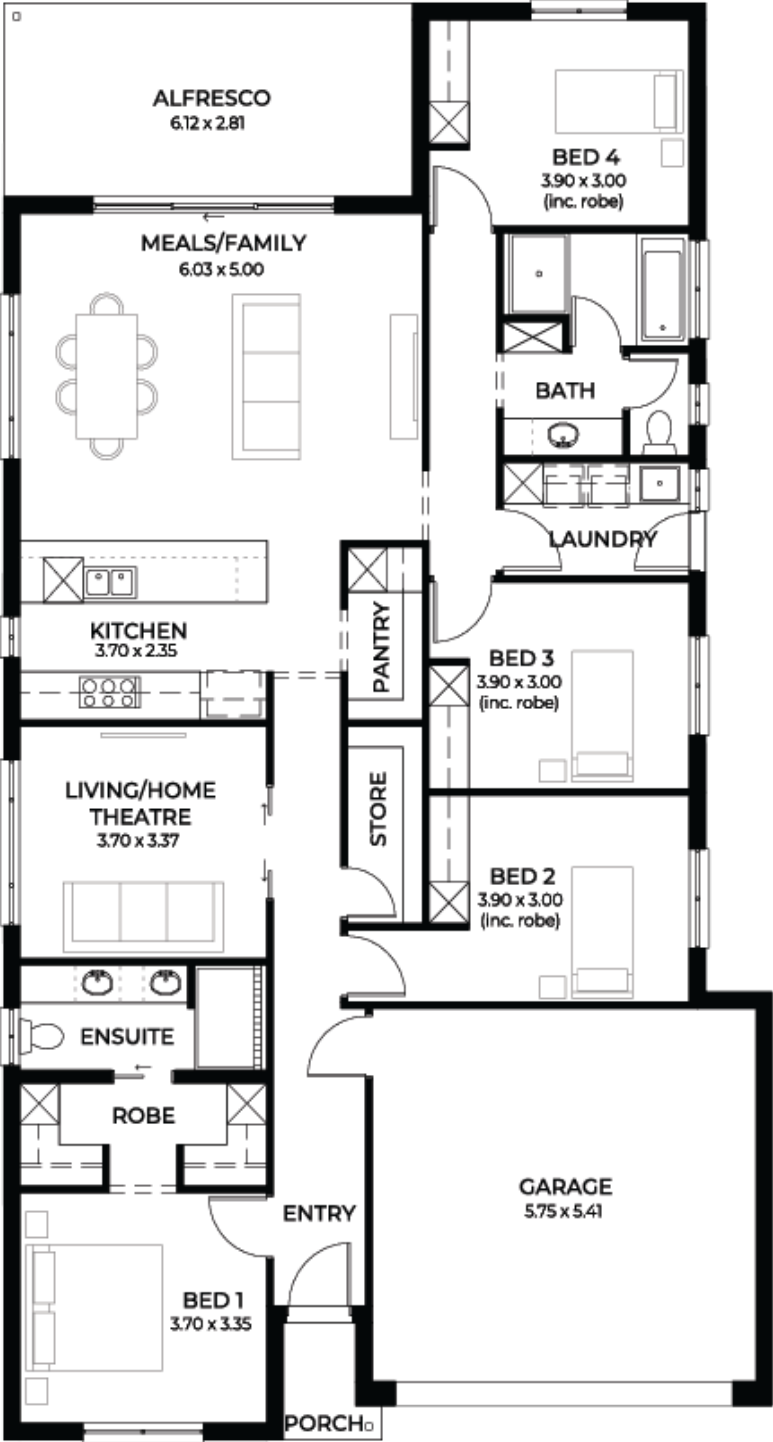
House
and Land
from
\$610,140*

LOT 1
Copper Sands
Wallaroo
'Teal 5.0'

Lot Size 530.00m²
Design Teal 5.0
Block Size 530m²
House Size 222m² / 23.94sqgs
Width 11.50m



4 2 2 2





**Lucky you,
all these
impressive
features are
included with
this home**

Build your ideal holiday or investment property, or a home to live in!

- Double garage with panel lift door and remote

- All flooring included (timber laminate to main living, carpets to bedrooms and home theatre)

- Kitchen with walk in pantry, overhead cupboards, 900mm cooking appliances and a free dishwasher

- Bathrooms with tiled ledges

- 2.7m ceilings and 2340mm door heights throughout

- Master bedroom with walk through robe, sliding mirror robes to all other bedrooms

- Ducted heating and cooling throughout

- Alfresco entertaining with slab and tiles

- Huge budget for footings and site works

- All joinery included

- Selections included in the price (upgrades available)

- A choice of facades and colours (pictured and priced with facade 9)

- 6.6Kw solar system

- 25-year structural guarantee, 3-month maintenance period and more