

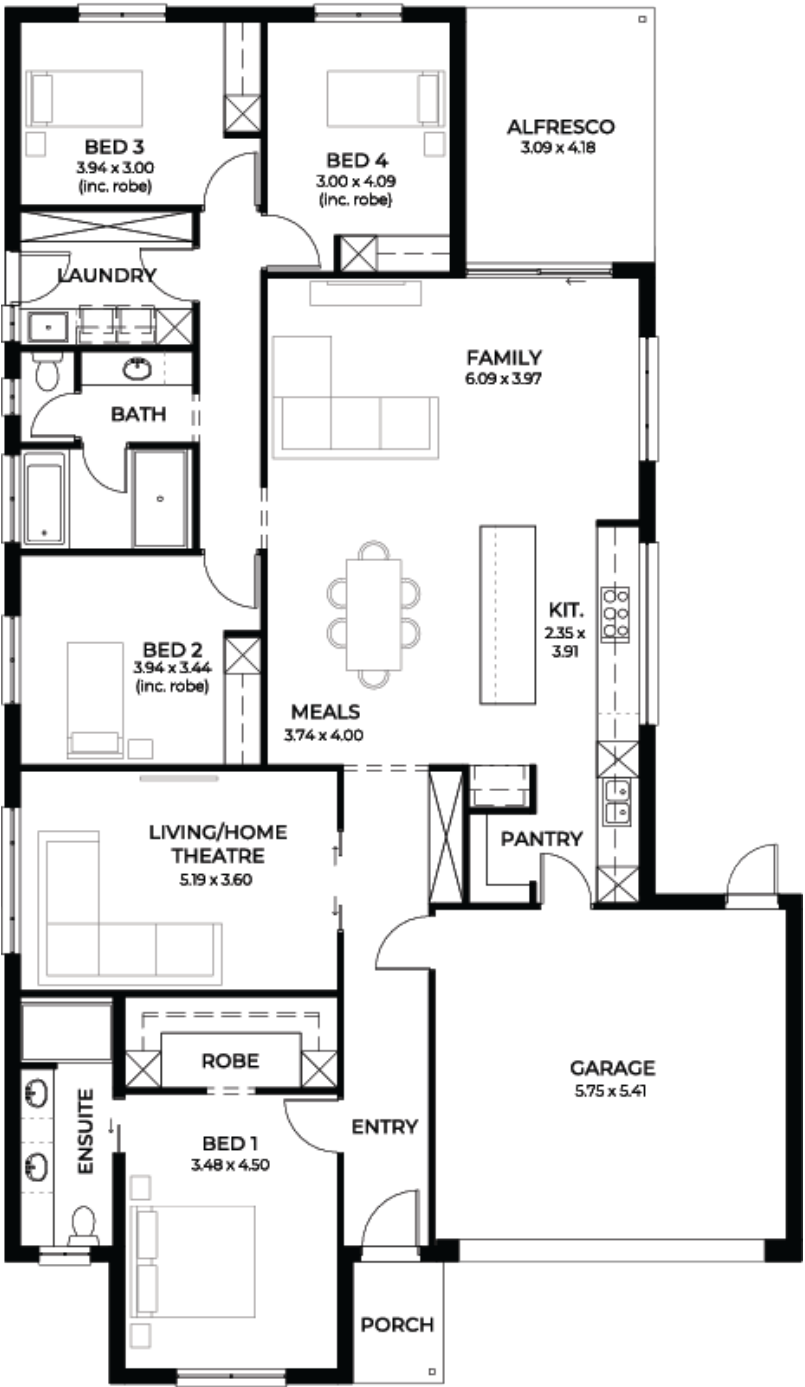
House
and Land
from
\$701,500*

LOT 26
Surrey Av
Angle Vale
'Cyan 3.5'

Lot Size 450.00m²
Design Cyan 3.5
Block Size 450m²
House Size 242m² / 26.11sqs
Width 13.00m



4 2 2 2





**Lucky you,
all these
impressive
features are
included with
this home**

Builders promotional discount applied

SPECIAL 15K discount on ready to build land

New liveable housing standards with 7-star energy efficiency

Solar power system 6.6Kw

2.7m ceiling throughout / 25-degree roof pitch / 450mm eaves

2.3m high doors (internal and external)

Insulation throughout including R6.0 to ceiling

900mm Westinghouse appliances to kitchen

Built-in robes with mirror finish, drawers, and shelving set

Tiled ledge to showers with 1.95m high

Milan semi-framed shower screens

45 litre inset trough to laundry with floor units and tiling behind

400mm deep overhead cupboards and dishwasher to kitchen

Auto single span panel to garage

Data-based footing and site works allowance

Premium facade as selected or your choice, including slab and tiles

Slab and tiles to alfresco as per plan

Flooring included (carpets to rooms / timber laminate to living, kitchen)

Ducted reverse cycle air-conditioning with WIFI control

3-month fast track process

3-month maintenance

25-year structural guarantee

Contact Guru Singh for further information

Guru Singh0452 249 999

Gurus@sahousingcentre.com.au **sahousingcentre.com.au**

* Terms and Condition's apply. For full details go to sahousingcentre.com.au/terms-and-conditions/