

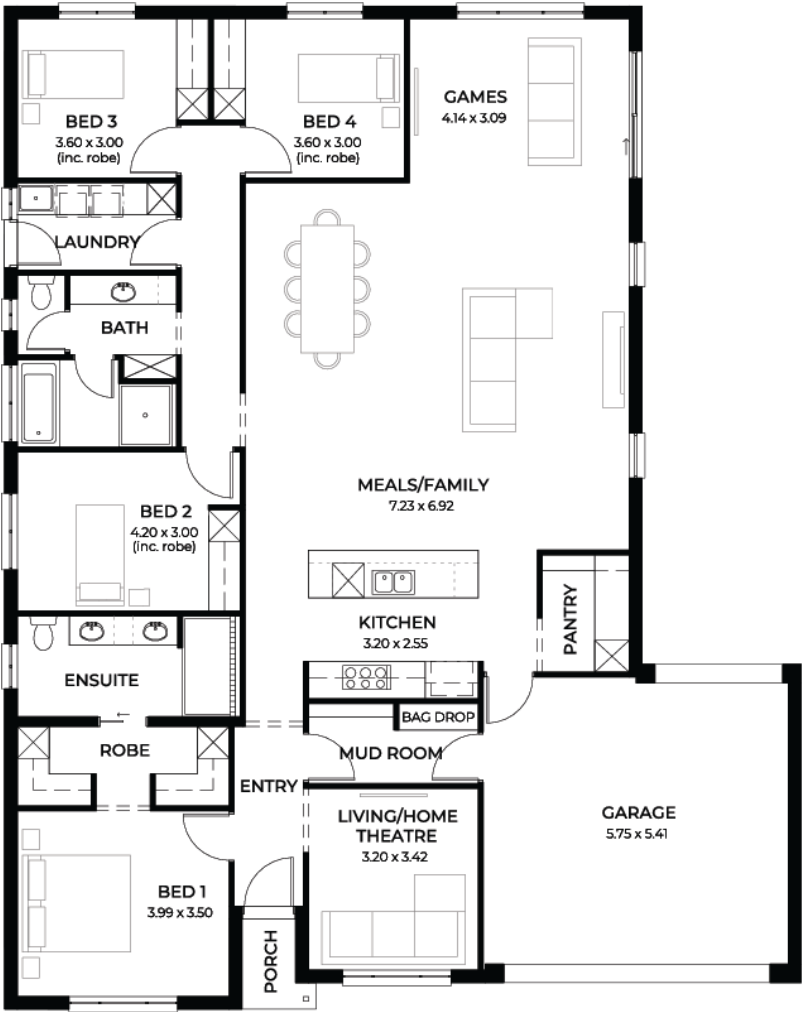
House  
and Land  
from  
\$720,000\*

LOT 10  
New Road  
Nuriootpa  
'Fuchsia 5.0'

Lot Size 1000.00m<sup>2</sup>  
Design Fuchsia 5.0  
Block Size 1000m<sup>2</sup>  
House Size 241m<sup>2</sup> / 26.02sqsq  
Width 15.00m



4 3 2 2





**Lucky you,  
all these  
impressive  
features are  
included with  
this home**

SA's Largest Builder is offering Home & Land packages with a streamlined quick and easy process

Rare Block in Upcoming Nuriootpa release - Kalimna Grove

6 Month Build Time on Titled Land available

Block Nearby Estate Park & Walking Trail

Premium Range Front Elevations of choice

Solar Panel System 6.6kW + 7 Star Energy Rating

Kitchen Complete with Overheads, Pot Drawers, 900mm Appliances & Dishwasher

Butlers Pantry with Undermount Microwave Provision, Benchtop, Shelving, Plumbed Fridge Point

Laundry Level 3 with Bench, Linen Closet, 45l Sink + Cupboard & Overheads

Mirror sliding doors to all wardrobes in bedrooms, Double Shelf & Rail, 4x drawers

Ensuite & Bathrooms with Shower Ledges, Heat Lamps, XL Mirror & Vanity Drawers

Flooring Upgrade Level 3 Timber + Carpets

Air Con Fully Ducted System H+C w/ Wifi

Upgraded 2.7m Ceilings with Trilock Door Bolt & all doors 2.4m internal

Timber Frame Brick External Fully Insulated

Finance with your Broker OR Ours

Fully Turn Key Options Available for Paved Driveway, Perimeter & Stormwater

Footings Price Included to Engineer Specs

All Services Electrical Water NBN Connected

Fast Track Simple Process to Home Building

Inquire about our current Promotion & Discounts!