

# House and Land

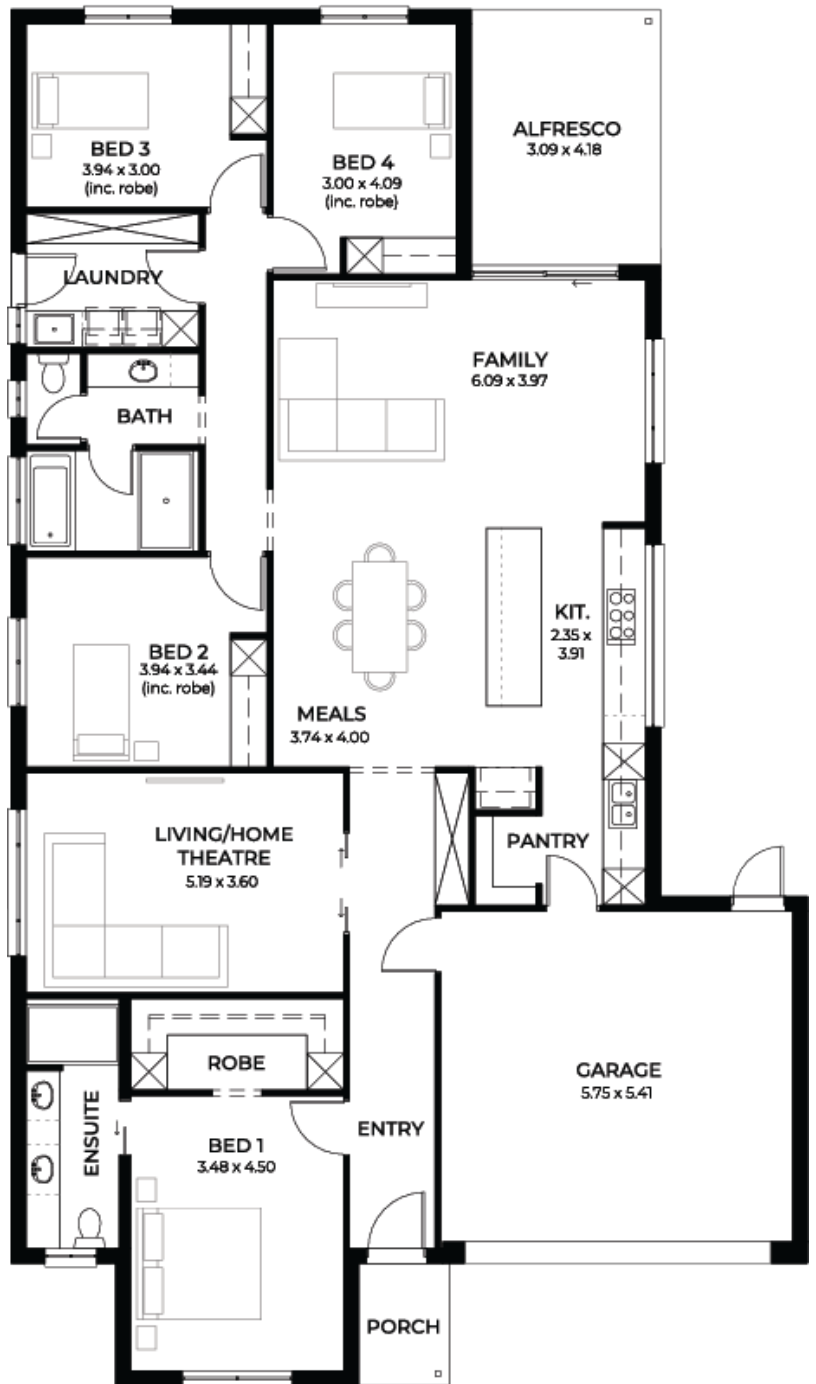
from **\$757,600\***

LOT 1405  
Shannon Place  
Virginia Grove  
'Cyan 3.5'



Lot Size 486.00m<sup>2</sup>  
Design Cyan 3.5  
Block Size 486m<sup>2</sup>  
House Size 242m<sup>2</sup> / 26.11sq  
Width 13.00m

 4  2  2  2



**SA** HOUSING CENTRE

**Guru Singh 0452 249 999**

Gurus@sahousingcentre.com.au [sahousingcentre.com.au](http://sahousingcentre.com.au)

\* Terms and Condition's apply. For full details go to [sahousingcentre.com.au/terms-and-conditions/](http://sahousingcentre.com.au/terms-and-conditions/)



**Lucky you,  
all these  
impressive  
features are  
included with  
this home**

Builders promotional discount applied

SPECIAL - Free air conditioner with an extra 5K discount

New livable housing standards with 7 star energy efficiency

Solar power system 6.6kW

2.7m ceiling throughout / 25 degree roof pitch / 450mm eaves

2.3m high doors (external and internal)

Insulation throughout including R6.0 to ceiling

900mm Westinghouse appliances to kitchen

Built-in robes with mirror finish, drawers and shelving set

Tiled ledge to showers, 1.95m high

Milan semi-framed shower screens

45 litre inset trough to laundry with floor units and tiling behind

400mm deep overhead cupboards and dishwasher to kitchen

Auto single span panel to garage

Data-based footing and site works allowance

Premium facade as selected or your choice, including slab and tiles

Slab and tiles to alfresco as per plan

Flooring included (carpets to rooms / timber laminate to living, kitchen)

Ducted reverse cycle air-conditioning with Wi-Fi control

3 month fast track process

3 month maintenance

25 year structural guarantee

Contact Guru Singh for further information