

House and Land

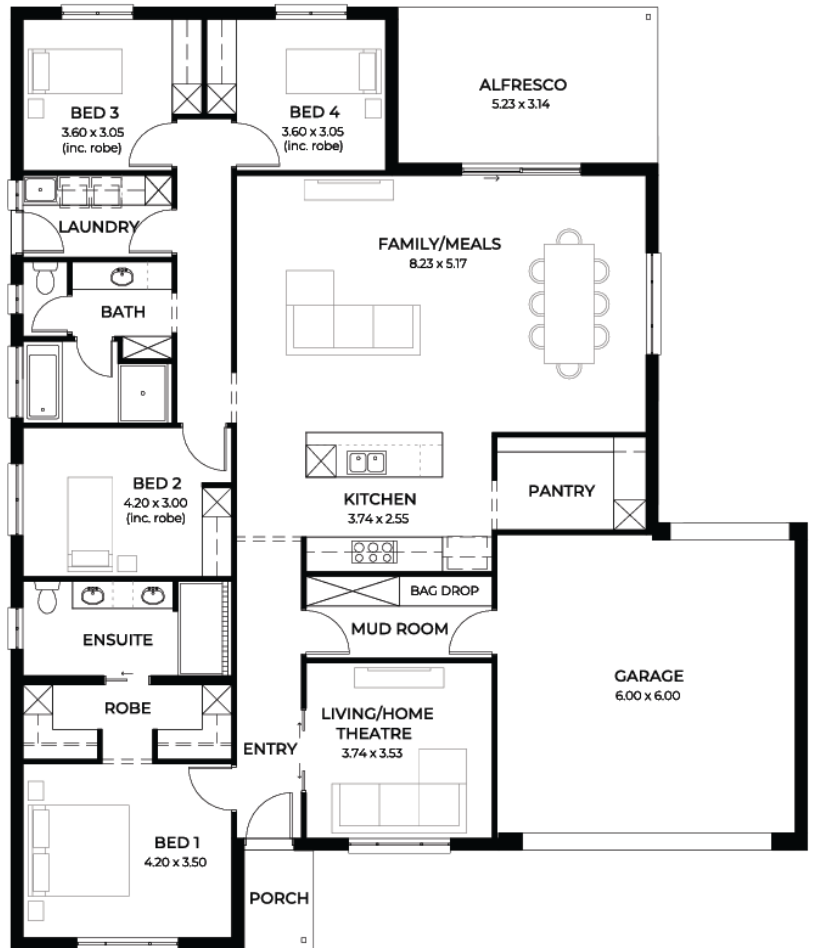
from
\$850,200*

LOT 144
Buring Road
Roseworthy
'Ebony 3.5'

Lot Size 915.00m²
Design Ebony 3.5
Block Size 915m²
House Size 252m² / 27.15sqgs
Width 16.00m



 4  2  2  2





**Lucky you,
all these
impressive
features are
included with
this home**

Builders promotional discount applied

SPECIAL 5K discount and free air conditioner

New livable housing standards with 7 star energy efficiency

Solar power system 6.6kW

2.7m ceiling throughout / 25 degree roof pitch / 450mm eaves

2.3m high doors (external and internal)

Insulation throughout including R6.0 to ceiling

900mm Westinghouse appliances to kitchen

Built-in robes with mirror finish, drawers and shelving set

Tiled ledge to showers, 1.95m high

Milan semi-framed shower screens

45 litre inset trough to laundry with floor units and tiling behind

400mm deep overhead cupboards and dishwasher to kitchen

Auto single span panel to garage

Data-based footing and site works allowance

Premium facade as selected or your choice, including slab and tiles

Slab and tiles to alfresco as per plan

Flooring included (carpets to rooms / timber laminate to living, kitchen)

Ducted reverse cycle air-conditioning with Wi-Fi control

3 month fast track process

3 month maintenance

25 year structural guarantee

Contact Guru Singh for further information