

House and Land

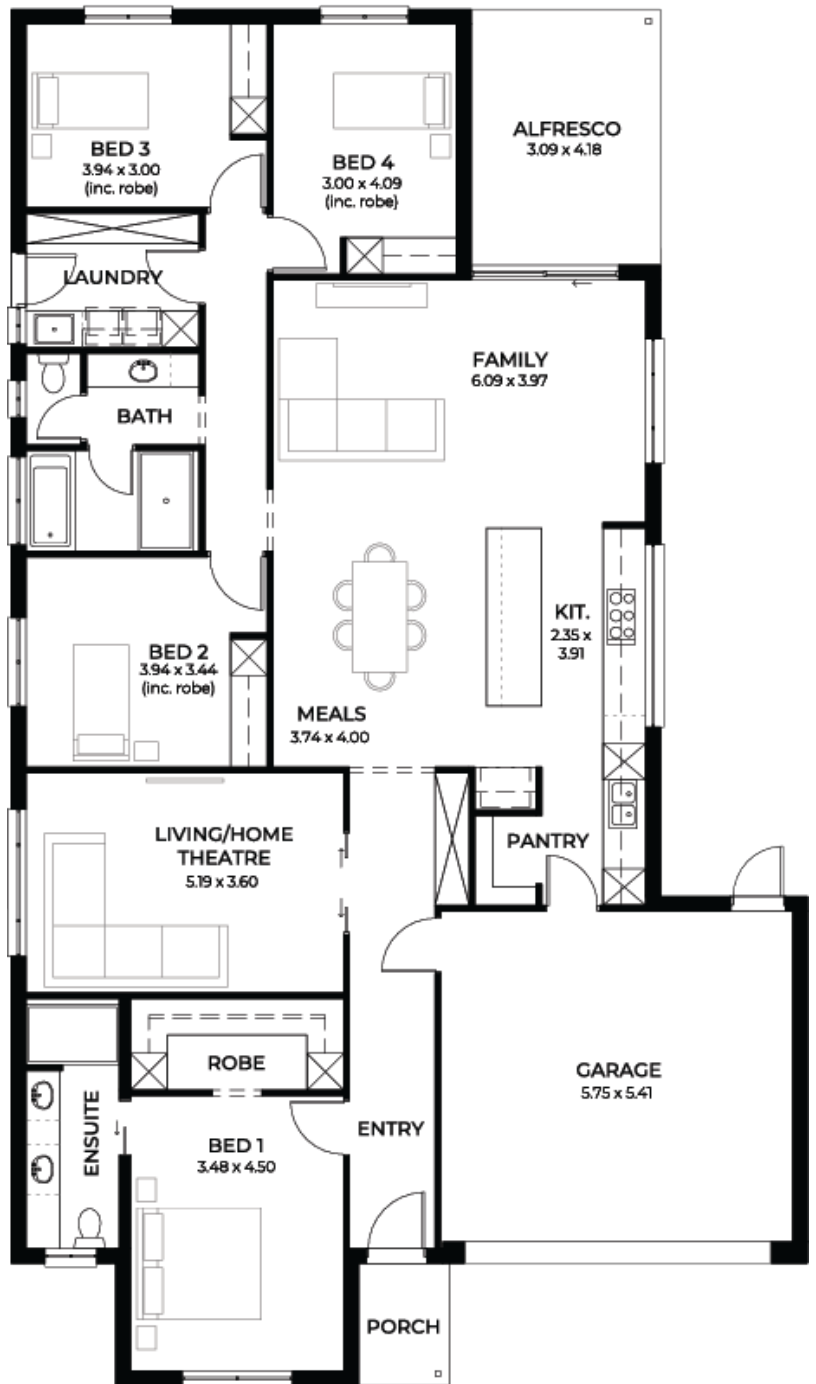
from **\$719,200***

LOT 25
Primrose Court
Davoren Park
'Cyan 3.5'



Lot Size 450.00m²
Design Cyan 3.5
Block Size 450m²
House Size 242m² / 26.11sqs
Width 13.00m

 4
  2
  2
  2





**Lucky you,
all these
impressive
features are
included with
this home**

Builders promotional discount applied

SPECIAL 5K discount and free air

New livable housing standards with
7-star energy efficiency

Solar power system 6.6kw

2.7m ceiling throughout / 25-degree
roof pitch / 450mm eaves

2.3m high doors (external and internal)

Insulation throughout including R6.0 to
ceiling

900mm Westinghouse appliances to
kitchen

Built-in robes with mirror finish,
drawers and shelving set

Tiled ledge to showers with 1.95m
high

Milan semi-framed shower screens

45 litre inset trough to laundry with
floor units and tiling behind

400mm deep overhead cupboards and
dishwasher to kitchen

Auto single span panel to garage

Data-based footing and site works
allowance

Premium facade as selected or your
choice, including slab and tiles

Slab and tiles to alfresco as per plan

Flooring included (carpets to rooms /
timber laminate to living, kitchen)

Ducted reverse cycle air-conditioning
with WIFI control

3-month fast track process

3-month maintenance

25-year structural guarantee

Contact Guru Singh for further
information