

House and Land

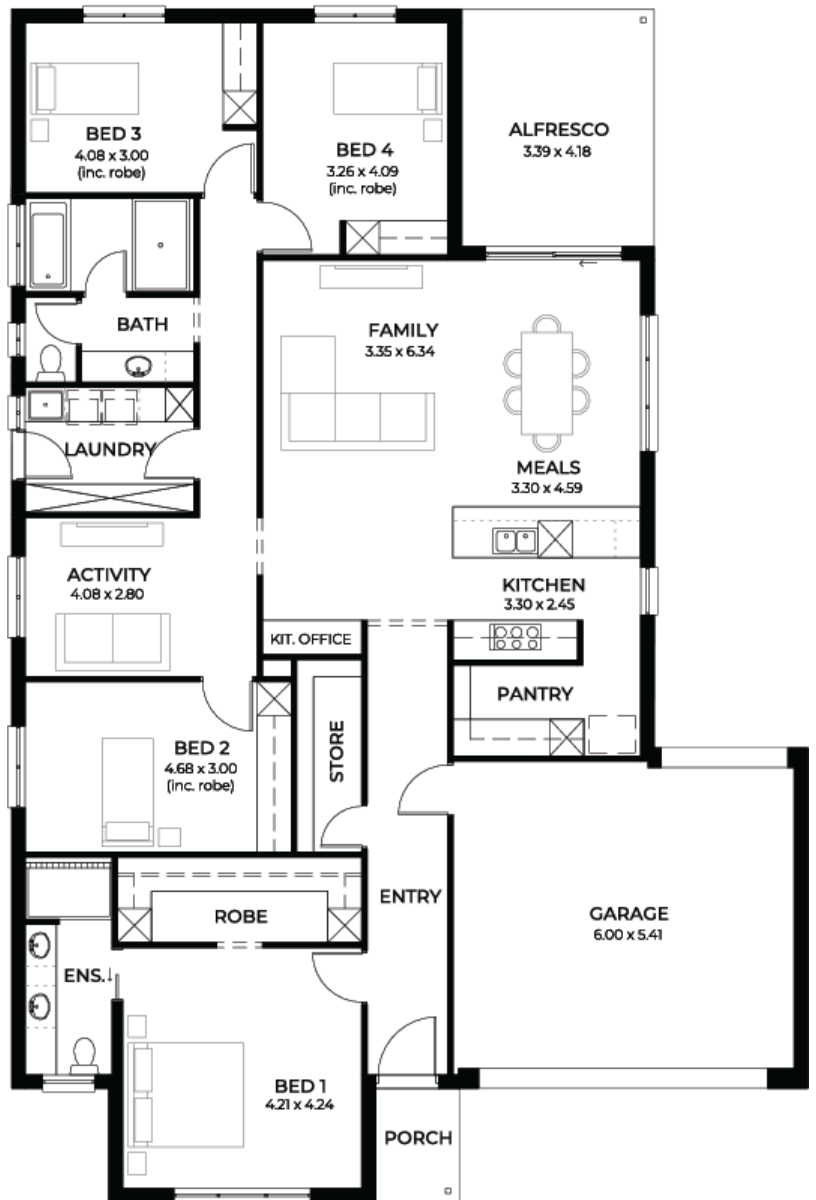
from **\$694,002***

LOT 435
Burnell Ave
Gawler Belt
'Mahogany 3.5'

Lot Size 560.00m²
Design Mahogany 3.5
Block Size 560m²
House Size 243m² / 26.18sqgs
Width 14.00m



 4
  2
  2
  2





**Lucky you,
all these
impressive
features are
included with
this home**

Builder's promotional discount applied

New Liveable Housing Standards with 7 star energy efficiency

6.6 KW solar power system

2.7m ceiling throughout /25 degree roof pitch /450mm eaves

2.3m high doors (external and internal)

Insulation throughout including R 6.0 to ceiling

900mm Westinghouse appliances to kitchen

Built in robes with mirror finish, drawers and shelving set

Tiled ledge to showers with 1.95m high milan semi-framed shower screens

45 litre inset trough to laundry with floor units and tiling behind

400mm deep overhead cupboards and dishwasher to kitchen

Auto single span panel to garage

Data based footing and site works allowance

Premium facade as selected or your choice, including slab and tiles

Slab and tiles to alfresco as per plan

Flooring included (carpets to rooms/timber laminate to living, kitchen)

Ducted reverse cycle air-conditioning with WIFI control

3-month fast track process

3-month maintenance

25-year structural guarantee