

House and Land

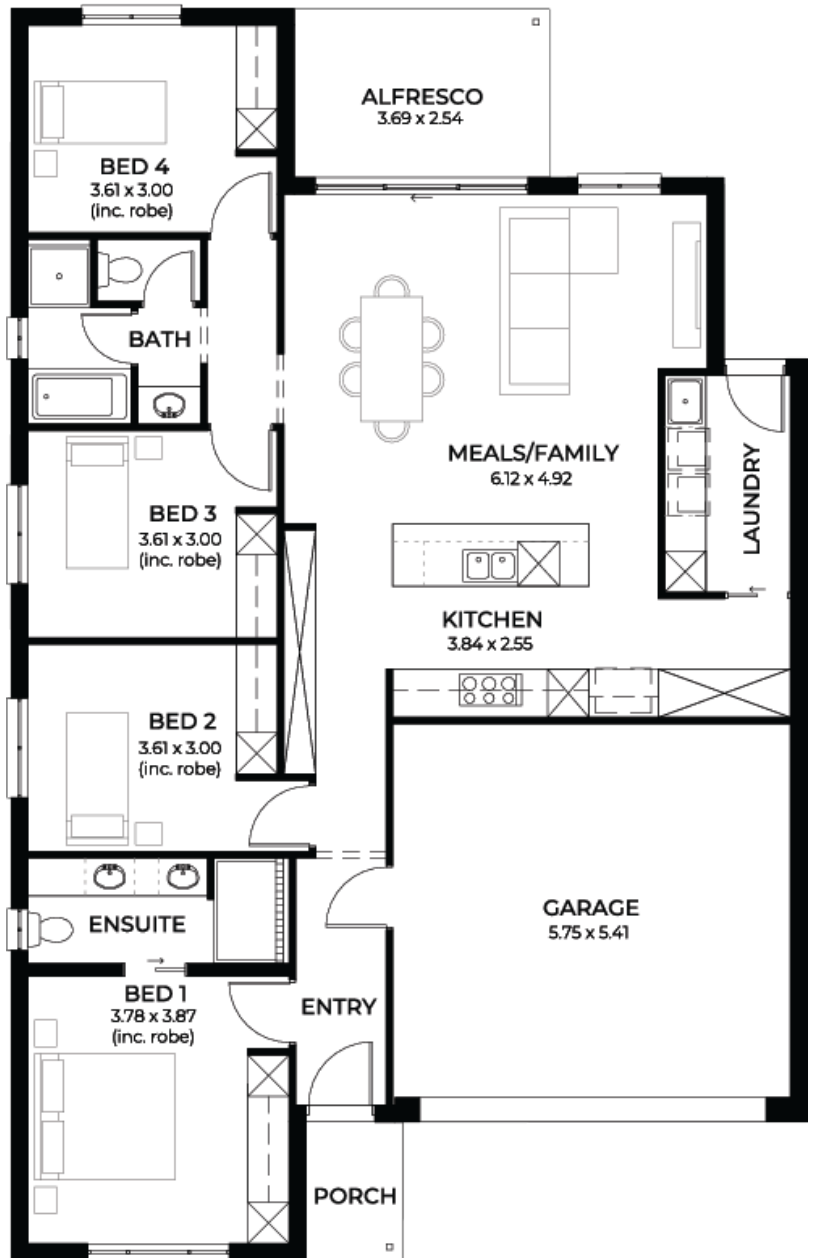
from **\$585,000***

LOT 7
Samuel Ct
Lyndoch
'Cobalt 3.5'



Lot Size 500.00m²
Design Cobalt 3.5
Block Size 500m²
House Size 183m² / 19.80sqm
Width 11.50m

 4  1  2  2





**Lucky you,
all these
impressive
features are
included with
this home**

SA's largest builder is offering home & land packages with a streamlined quick and easy process

Rare Block in Gilberts Hill Estate - Last One Available!

6-month build time on Titled land available

Block nearby estate park & walking trail

Premium range front elevations of choice

Solar panel system 6.6kW + 7-star energy rating

Kitchen complete with overheads, pot drawers, 900mm appliances & dishwasher

Butler's pantry with undermount microwave provision, benchtop, shelving, plumbed fridge point

Laundry level 3 with bench, linen closet, 45l Sink + cupboard & overheads

Mirror sliding doors to all wardrobes in bedrooms, double shelf & rail, 4x drawers

Ensuite & bathrooms with shower ledges, heat lamps, large mirror & vanity drawers

Flooring upgrade level 3 timber + carpets

Air con fully ducted system (hot & cold with wifi)

Upgraded 2.7m ceilings with trilock door bolt & all doors 2.4m internal

Timber frame brick external fully insulated

Finance with your broker or ours

Full turn-key options available for paved driveway, perimeter & storm water

Footings price included to engineer specifications

All services - electrical, water & NBN connected

Fast track simple process to home building

Enquire about our current promotion & discounts!