

House and Land

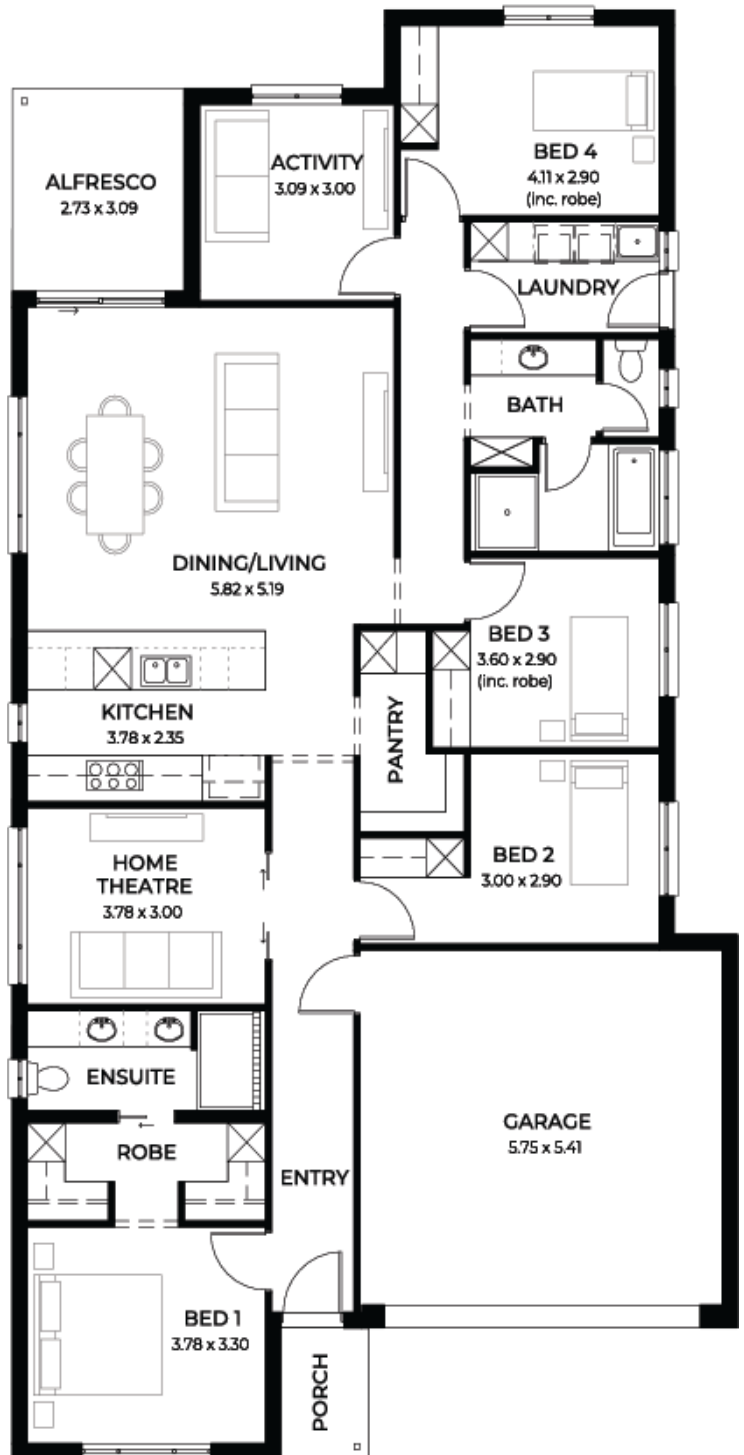
from **\$568,033***

LOT 169
Mentone Road
Hayborough
'Burgundy 3.5'

Lot Size 667.00m²
Design Burgundy 3.5
Block Size 667m²
House Size 221m² / 23.81sqs
Width 11.50m



 4
  3
  2
  2





**Lucky you,
all these
impressive
features are
included with
this home**

Builder promotional discount applied

New Liveable Housing Standards with
7 star energy efficiency

6.6 kW solar power system

2.7m ceiling throughout / 25 degree
roof pitch / 450mm eaves

2.3m high doors, including external
and internal

Insulation throughout including R 6.0
to ceiling

900mm Westinghouse appliances to
kitchen

Built in robes with mirror finish,
drawers and shelving set

Tiled ledge to showers with 1.95m
high Milan Semi-Framed Shower
Screens

45 litre inset trough to laundry with
floor units and tiling behind

400mm deep overhead cupboards and
dishwasher to kitchen

Auto single span panel to garage

Data based footing and site works
allowance

Premium facade as selected or your
choice, including slab and tiles

Slab and tiles to alfresco as per plan

Flooring including carpets to rooms
and timber laminate to living, kitchen

Ducted reverse cycle air-conditioning
with Wi-Fi control

3 Month fast track process

3 month maintenance

25 year structural guarantee