

House and Land

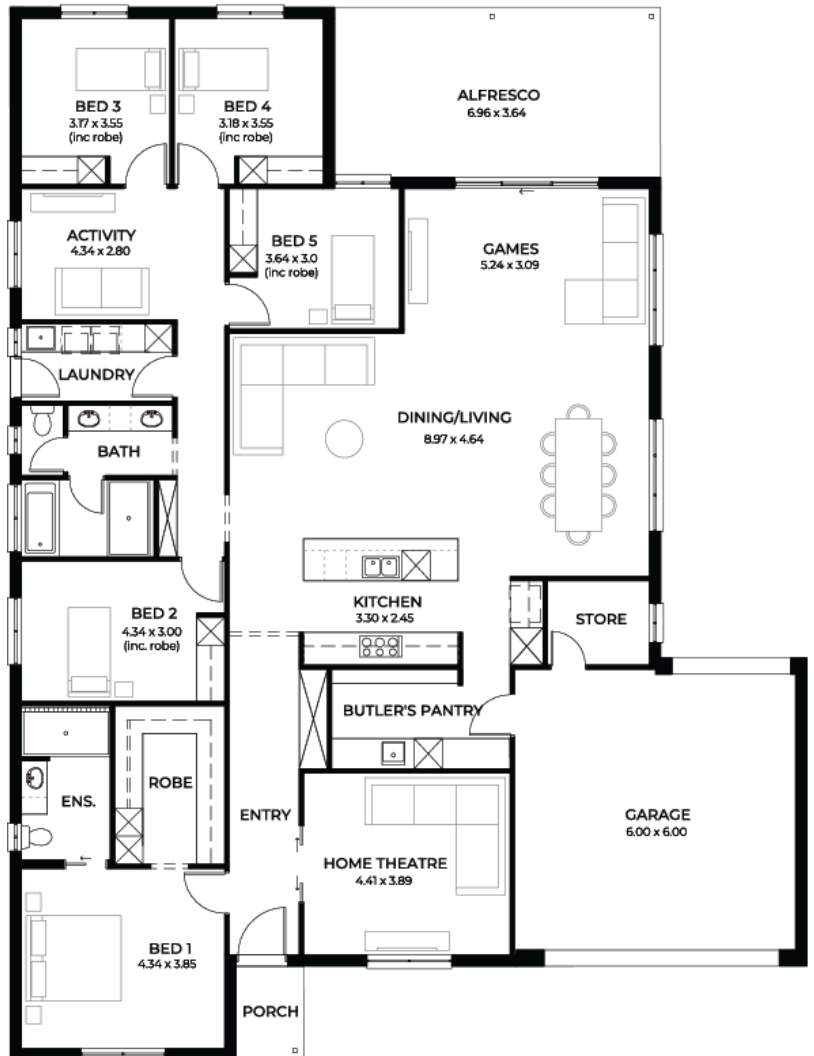
from **\$787,600***

LOT 102
New Road
Nuriootpa
'Magenta 3.5'

Lot Size 1112.00m²
Design Magenta 3.5
Block Size 1112m²
House Size 317m² / 34.19sqgs
Width 17.00m



 5
  3
  2
  2





**Lucky you,
all these
impressive
features are
included with
this home**

Free Ducted reverse cycle
air-conditioning with Wi-Fi control

New Liveable Housing Standards with
7 star energy efficiency

6.6 kW solar power system

Storm water

3000L rain water tank

4250L common effluent septic system

2.7m ceiling throughout / 25 degree
roof pitch / 450mm eaves

2.3m high doors, including external
and internal

Insulation throughout including R 6.0
to ceiling

900mm Westinghouse appliances to
kitchen

Built in robes with mirror finish,
drawers and shelving set

Tiled ledge to showers with 1.95m
high Milan Semi-Framed Shower
Screens

45 litre inset trough to laundry with
floor units and tiling behind

400mm deep overhead cupboards and
dishwasher to kitchen

Auto single span panel to garage

Data based footing and site works
allowance

Premium facade as selected or your
choice, including slab and tiles

Slab and tiles to alfresco as per plan

Flooring including carpets to rooms
and timber laminate to living, kitchen

3 Month fast track process

3 month maintenance

25 Year Structural Guarantee