

# House and Land

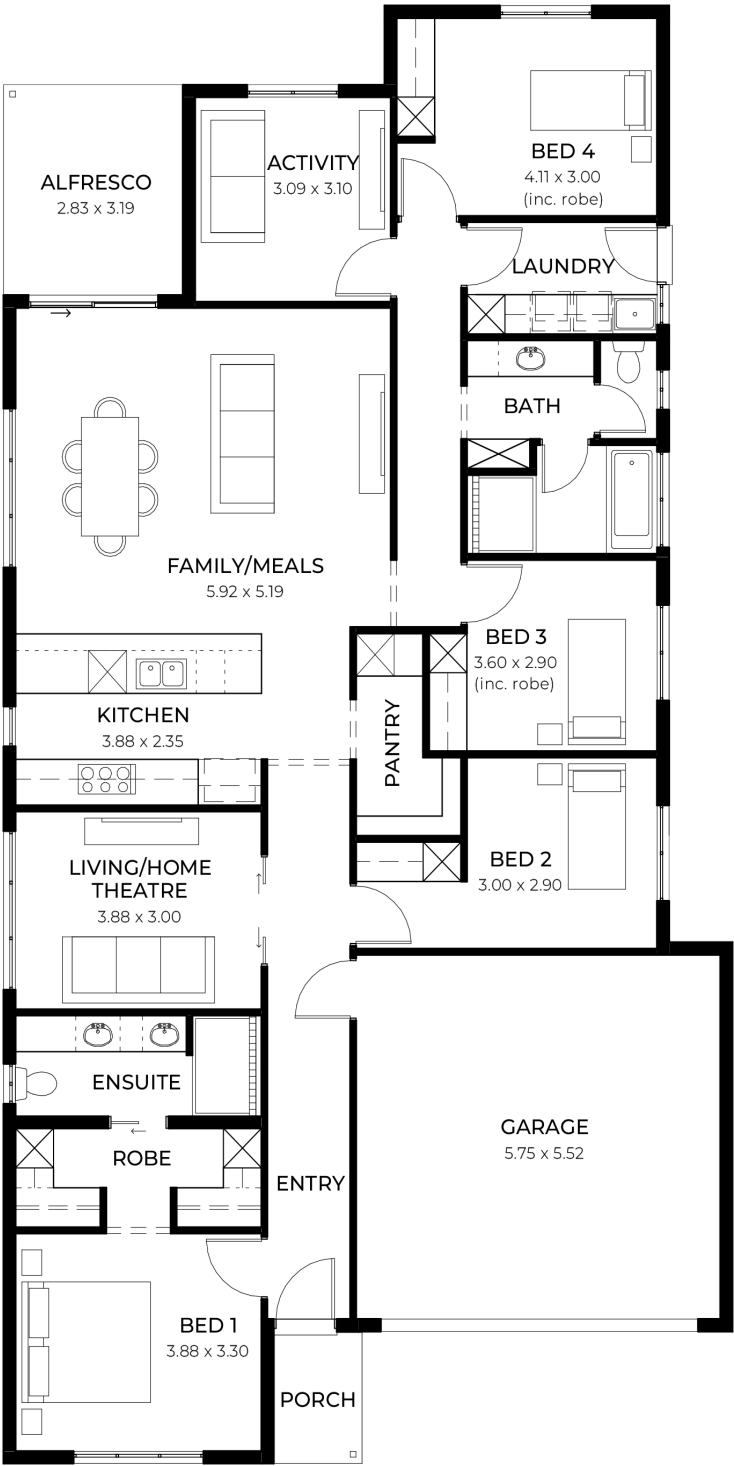
from  
\$736,000\*

LOT 1138  
Pittosporum Avenue  
Andrews Farm  
'Burgundy 3.5'

Lot Size 375.00m<sup>2</sup>  
Design Burgundy 3.5  
Block Size 375m<sup>2</sup>  
House Size 221m<sup>2</sup> / 23.81sq  
Width 11.50m



4 3 2 2





**Lucky you,  
all these  
impressive  
features are  
included with  
this home**

Ready to build in Oct 2025

New liveable housing standards with 7 star energy efficiency including 6.6 kw solar system

Strom water, paving for driveway and pathway around the house

2.7m ceiling throughout / 25 degree roof pitch / 450mm eaves

2.3m high doors (external and Internal)

Insulation throughout including R6.0 to Ceiling

900mm Westinghouse appliances to kitchen

Westinghouse dishwasher

Built-in robes with mirror finish, drawers and shelving set

Tiled ledge to showers with 1.95m high Milan Semi-Framed shower screens

45 litre inset trough to laundry with floor units and tiling behind

400mm deep overhead cupboards and dishwasher to kitchen

Auto single span panel to garage

Data based footing and site works allowance

Premium facade as selected or your choice, including slab and tiles

Slab and tiles to alfresco as per plan

Flooring included (Carpets to rooms / Timber laminate to living, kitchen)

Ducted reverse cycle air-conditioning with WIFI control

Fast pre-construction process

3 Month maintenance

25 Year structural guarantee