

House and Land

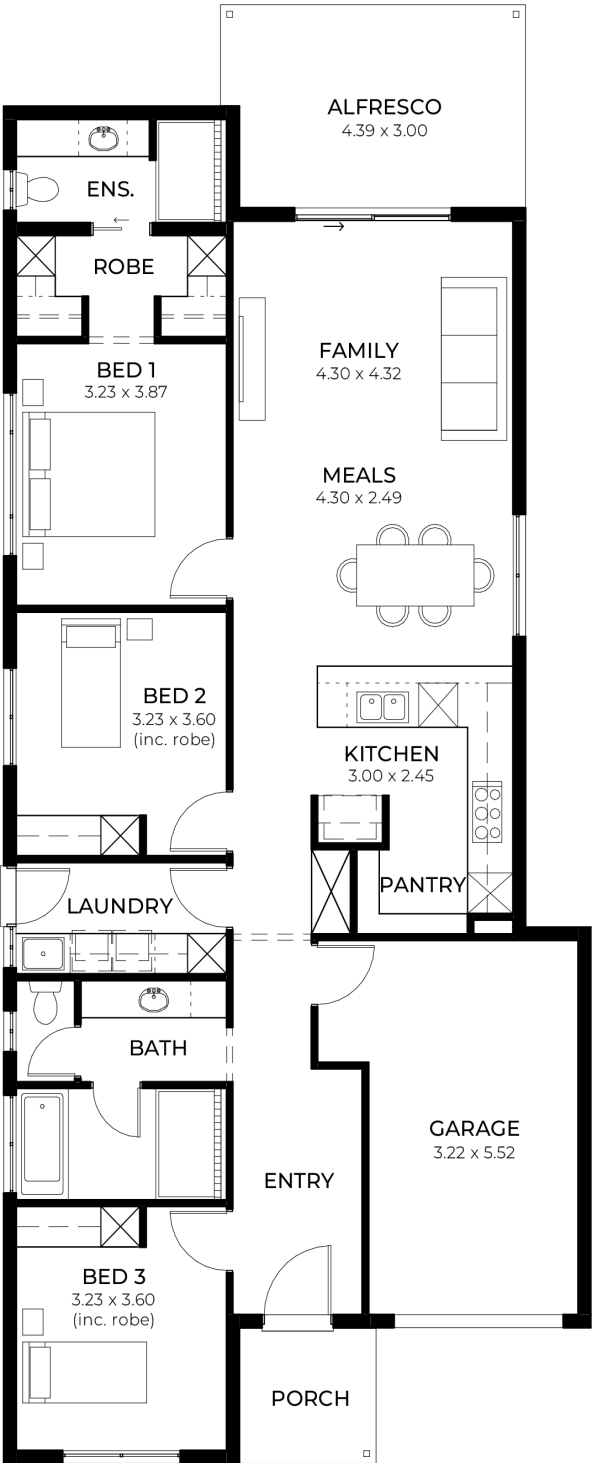
from
\$661,700*

LOT 1131
Pittosporum Avenue
Andrews Farm
'Pewter 3.5'

Lot Size 300.00m²
Design Pewter 3.5
Block Size 300m²
House Size 168m² / 18.15sq
Width 9.00m



3 1 2 1





**Lucky you,
all these
impressive
features are
included with
this home**

Ready to build in Nov 2025

New Liveable Housing Standards with
7 star energy efficiency including 6.6
kw solar system

Strom water, paving for driveway and
pathway around the house

2.7m ceiling throughout / 25 degree
roof pitch / 450mm eaves

2.3m high doors (external and
Internal)

Insulation throughout including R6.0 to
Ceiling

900mm Westinghouse appliances to
kitchen

Westinghouse dishwasher

Built-in robes with mirror finish,
drawers and shelving set

Tiled ledge to showers with 1.95m
high Milan Semi-framed shower
screens

45 litre inset trough to laundry with
floor units and tiling behind

400mm deep overhead cupboards and
dishwasher to kitchen

Auto single span panel to garage

Data based footing and site works
allowance

Premium facade as selected or your
choice, including slab and tiles

Slab and tiles to alfresco as per plan

Flooring included (Carpets to rooms /
Timber laminate to living, kitchen)

Ducted reverse cycle air-conditioning
with WIFI control

Fast pre-construction process

3 month maintenance

25 Year structural guarantee