

# House and Land

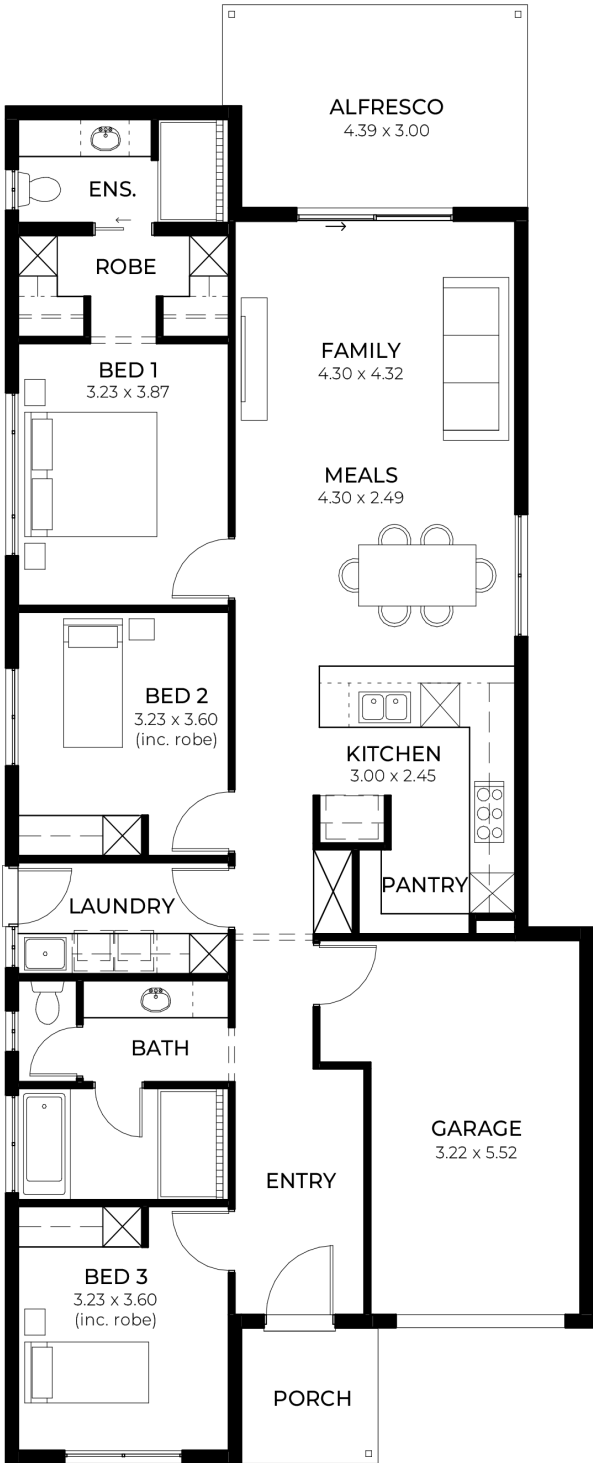
from  
\$637,800\*

LOT 1343  
Joseph Street  
Virginia  
'Pewter 3.5'

Lot Size 281.00m<sup>2</sup>  
Design Pewter 3.5  
Block Size 281m<sup>2</sup>  
House Size 168m<sup>2</sup> / 18.15sqgs  
Width 9.00m



3 1 2 1





**Lucky you,  
all these  
impressive  
features are  
included with  
this home**

Located in Rural township of Virginia  
in the Lanser Masterplan Community

This clever villa home is an  
all-inclusive packed with features for  
the large family is great value and well  
thought out. Offering you a 12 month  
fixed price.

**INCLUSIONS:**

\$10K Promotional discount on build  
price for a limited time only

Fixed Price Contract (12 months)

Driveway, paving and stormwater

Designer front facade

2.7m high ceiling

Automatic remote controlled panel lift  
colorbond garage door

Tiles to verandah / porch / alfresco

Aluminium powder coated awning  
windows

to main living areas and sliding  
windows to the remainder, including  
keylocks

Flyscreens to all windows

2340mm high Hume XN5 translucent  
glazed front door.

Carpet to bedrooms, home theatres  
and rear hallways

Timberimber laminate to front entry,  
family, kitchen and meals

Ducted reverse cycle air conditioning  
with wifi controller

Safety lighting throughout

900mm Westinghouse appliances

20mm solid surface benchtop to  
kitchen

Pot drawers, Kitchen bin with pull out  
drawer, Under bench microwave  
provision

with pot drawer, Soft close runners  
and hinges, Hi Flow water filter  
included.

Recessed kickers and drawer units to  
vanities

Floor to ceiling tiling

Basis back to wall dual flush toilet  
suites with soft close

45 litre inset trough, broom cupboard  
and bin and 300mm deep overheads  
with handing

rail to laundry.

3 month warranty period and 25 year  
structural guarantee