

House and Land

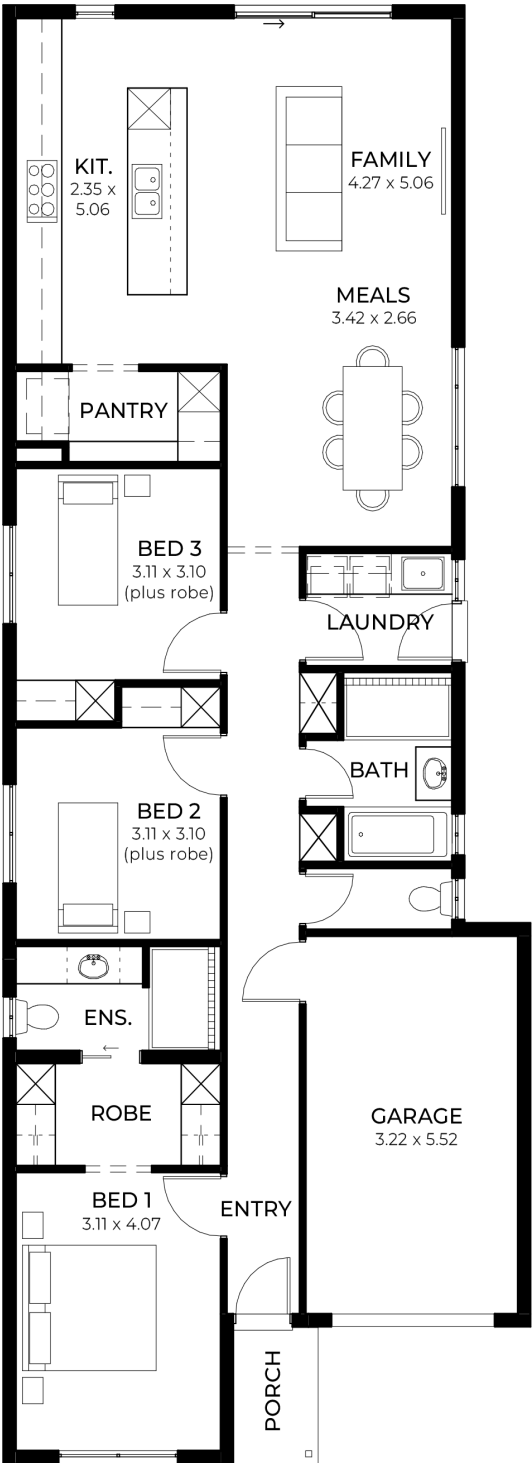
from
\$623,600*

LOT 401
Sandpiper Drive
Encounter Bay
'Ivory 3.5'

Lot Size 321.00m²
Design Ivory 3.5
Block Size 321m²
House Size 150m² / 16.22sqsq
Width 8.00m



3 1 2 1





**Lucky you,
all these
impressive
features are
included with
this home**

Fixed Price & Everything Included

**LAND READY FOR CONSTRUCTION
IN JULY**

Ducted reverse-cycle A/C with Wi-Fi
control

Timber laminate floors to living, carpet
to bedrooms

6.6kW solar system

Driveways, pathways and stormwater

Solid surface benchtops to kitchen &
pantry

900mm Westinghouse oven, cooktop
& rangehood

Dishwasher, microwave provision &
fridge plumbing

Hebel external walls with Colorbond
roof

2700mm high ceilings throughout

Shower ledges & semi-framed shower
screens

Soft-close cabinetry in kitchen,
laundry, bathroom & ensuite

Built-in robes with drawers, mirror
sliders & walk-in robe fitout

Garage with remote panel-lift door &
internal access

Rendered front facade & three-colour
external paint scheme

NBN conduit, TV/data points & Clipsal
Iconic electrical fittings