

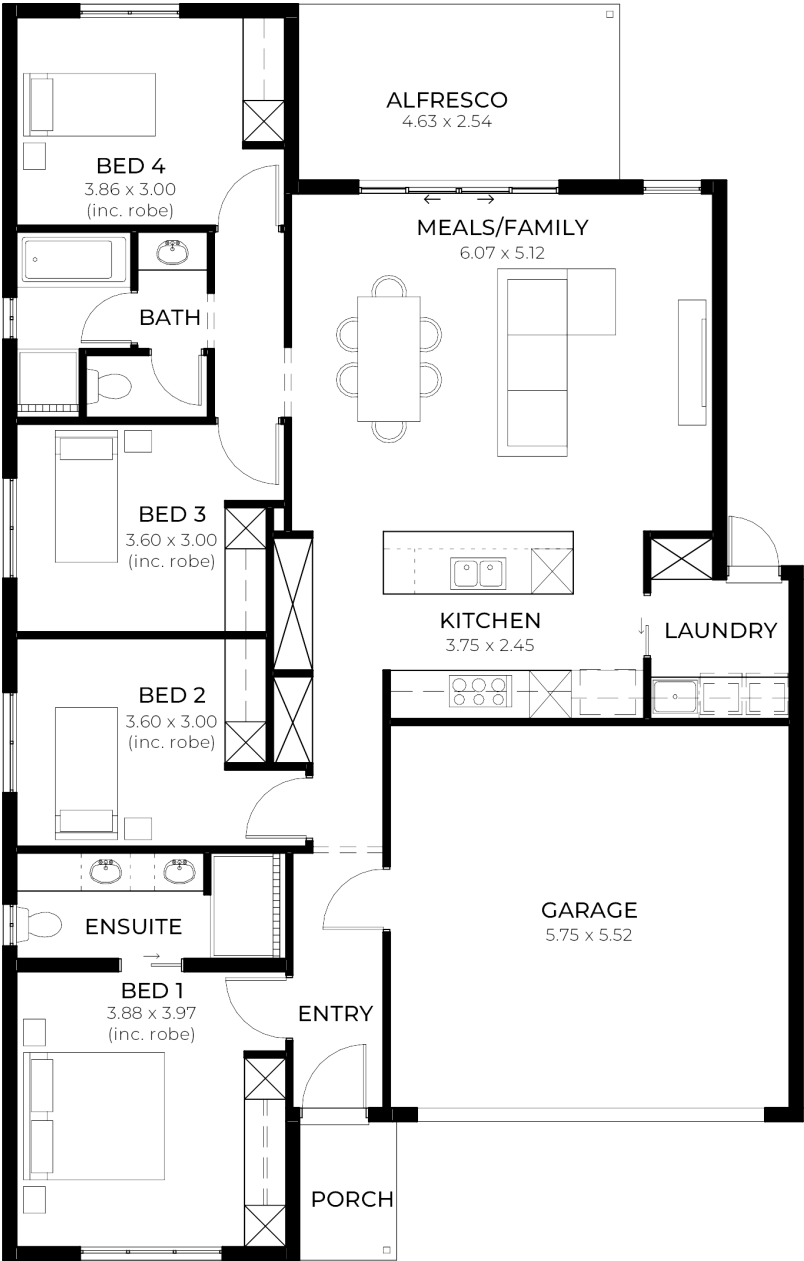
House  
and Land  
from  
\$635,000\*

LOT 1535  
Hillier Street  
Riverlea Park  
'Cobalt 3.5'

Lot Size 313.00m<sup>2</sup>  
Design Cobalt 3.5  
Block Size 313m<sup>2</sup>  
House Size 183m<sup>2</sup> / 19.80sq  
Width 11.50m



4 1 2 2





**Lucky you,  
all these  
impressive  
features are  
included with  
this home**

**BEST PLAN FOR A 12.5 x 25  
BLOCK!!!**

**Fixed Price Inclusions Package! Get  
started with Just \$1K!**

**Experience luxury, comfort, and  
efficiency with our premium inclusions,  
all part of your new home - at a fixed  
price.**

**Energy & Climate Efficiency 6.6kW  
Solar Power System**

**Eco-friendly and energy-efficient as  
standard ducted reverse cycle air  
conditioning**

**Complete home climate control with  
Wi-Fi connectivity stylish interior  
finishes lifestyle carpet**

**Plush carpeting to all bedrooms,  
study, and theatre timber laminate  
flooring**

**Sleek and durable finishes to entry,  
rear hallway, kitchen, meals, and  
family areas high ceilings (2700mm)**

**Enhancing space and luxury  
throughout the home Comfort &  
Insulation Comprehensive Insulation  
Package**

**R6.0 to ceilings, R2.5 to external  
walls, R2.0 to internal walls and  
garage for year-round comfort**

**Gourmet Kitchen Premium 900mm  
Westinghouse Appliances - Including  
oven, cooktop, rangehood and  
dishwasher 20mm Solid Surface  
Benchtops**

**Sleek and durable surfaces in kitchen  
and pantry**

**Designer Bathrooms Luxury Inclusions  
- Featuring square-edge benchtops,  
semi-framed shower screens, and  
Luna tapware and accessories.**

**Built-in Storage Solutions Ample  
Storage Throughout - Including walk-in  
robes, mirrored sliding robes, linen  
cupboards, pantry, and dedicated  
laundry storage**

**Outdoor Living Enhancements  
Entertainers Alfresco - Includes slab,  
tiling, gas point, and stormwater  
system for seamless outdoor  
enjoyment**

**Compliance Included Encumbrance  
Requirements - All applicable  
encumbrance criteria included for  
hassle-free approvals**