

House and Land

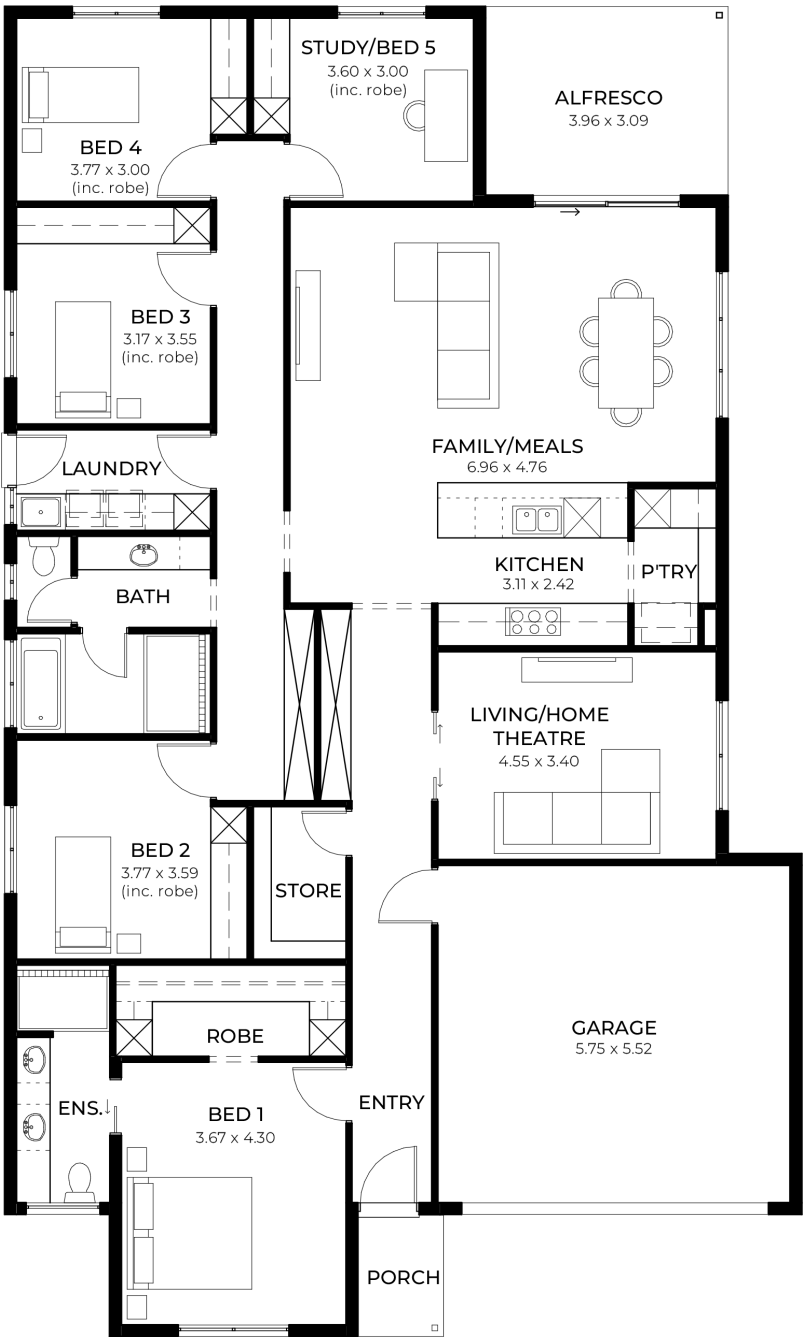
from
\$840,390*

LOT 306
Amelie Avenue
Virginia
'Cerulean 3.5'

Lot Size 450.00m²
Design Cerulean 3.5
Block Size 450m²
House Size 251m² / 27.03sq
Width 13.00m



5 2 2 2





**Lucky you,
all these
impressive
features are
included with
this home**

Genuine **FIXED PRICE** for 12 Months from contract signing

Transparent, comprehensive, and unlike any quote you will see elsewhere.

No surprises, no guesswork, just a streamlined, stress-free building experience.

Exceptional house and land package, thoughtfully designed to enhance your living experience.

Choice of premium facades

Option to upgrade to Aspire Inclusions

Hebel AAC dwelling with enhanced energy efficiency

Premium roofing with Colorbond materials and 6.6kW solar

Comprehensive insulation for superior climate control

Gourmet kitchen with top-tier appliances, solid surface benchtops and soft-close cabinetry

Luxury bathroom and laundry with elegant fittings and storage solutions

Thoughtful interior finishes, high ceilings and 2340mm tall doors

Advanced electrical features including ring doorbell and wifi AC

Turnkey inclusions with perimeter and driveway paving, stormwater and termite protection

Footings and site works included

Price valid for 14 days