

House and Land

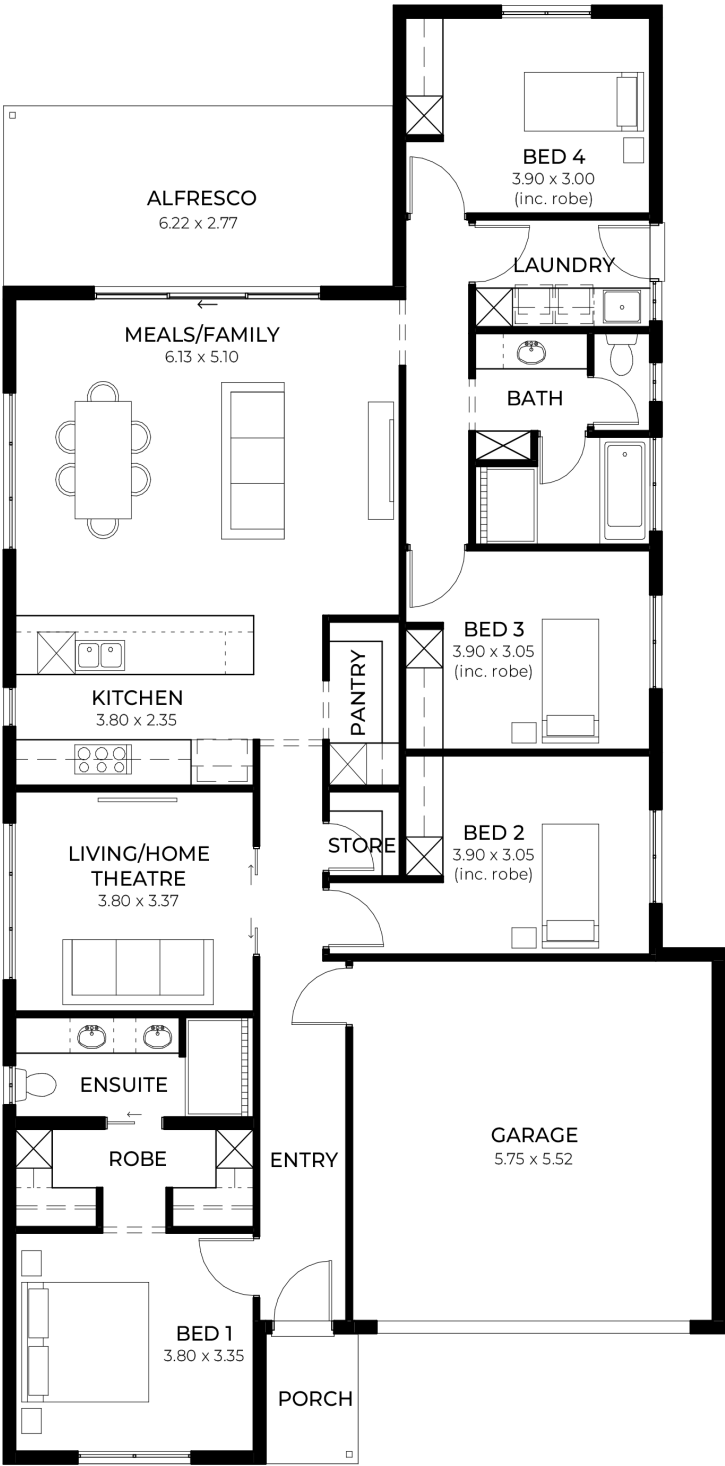
from \$753,340*

LOT 1426
Leombruno Way
Mount Barker
'Teal 3.5'

Lot Size 400.00m²
Design Teal 3.5
Block Size 400m²
House Size 221m² / 23.84sqgs
Width 11.50m



4 2 2 2





**Lucky you,
all these
impressive
features are
included with
this home**

New Liveable Housing Standards with 7 star energy efficiency including 6.6 kW solar system

2.7m ceiling throughout /25 degree roof pitch /450mm eaves

2.3m high doors, including external and internal

Insulation throughout including R 6.0 to ceiling

900mm Westinghouse appliances to kitchen, with a Westinghouse dishwasher

Solid surface benchtop to kitchen and pantry

Built-in robes with mirror finish, drawers and shelving set

Tiled ledge to showers with 1.95m high Milan Semi-Framed Shower Screens

45 litre inset trough to laundry with floorunits and tiling behind

400mm deep overhead cupboards to kitchen and laundry

Auto single span panel to garage

12 months fixed price including footings and site works

Premium facade as selected or your choice, including slab and tiles

Slab and tiles to alfresco as per plan

Flooring included, with carpets to rooms and timber laminate to living and kitchen

Ducted reverse cycle air-conditioning with Wi-Fi control

Fast pre construction process

3 Month Maintenance

25 Year Structural Guarantee