

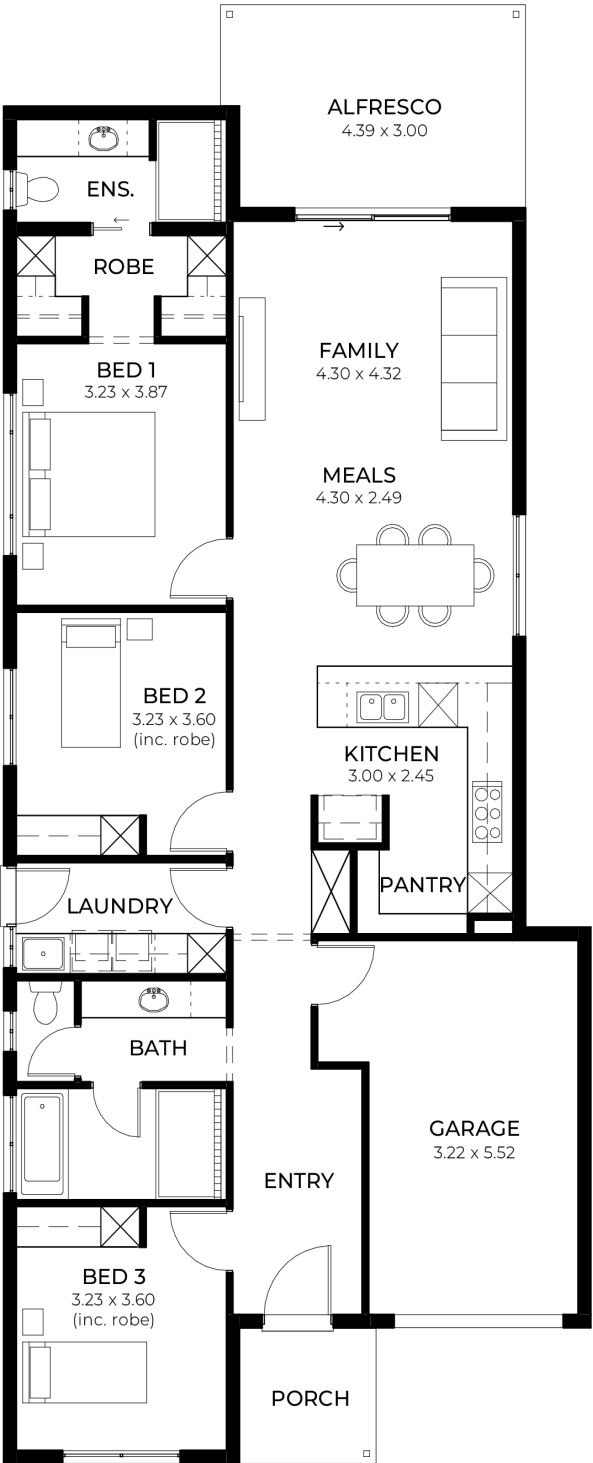
House
and Land
from
\$676,640*

LOT 3053
Mirino Loop
Angle Vale
'Pewter 3.5'

Lot Size 320.00m²
Design Pewter 3.5
Block Size 320m²
House Size 168m² / 18.12sqgs
Width 9.00m



3 1 2 1





**Lucky you,
all these
impressive
features are
included with
this home**

Genuine **FIXED PRICE** for 12 Months from contract signing

Transparent, comprehensive, and unlike anything you will see elsewhere

No surprises, no guesswork, just a streamlined, stress-free building experience

Exceptional house and land package, thoughtfully designed to enhance your living experience

Choice of premium facades

Option to upgrade to Aspire Inclusions

Hebel AAC dwelling with enhanced energy efficiency

Premium roofing with Colorbond materials and 6.6kW Solar

Comprehensive insulation for superior climate control

Gourmet kitchen with top-tier appliances, solid surface benchtops and soft-close cabinetry

Luxury bathroom and laundry with elegant fittings and storage solutions

Thoughtful interior finishes, high ceilings and 2340mm tall

Advanced electrical features including ring doorbell and Wi-Fi controlled air conditioning

Turnkey inclusions with perimeter and driveway paving, stormwater and termite protection

Footings and site works included Price valid for 14 days