

# House and Land

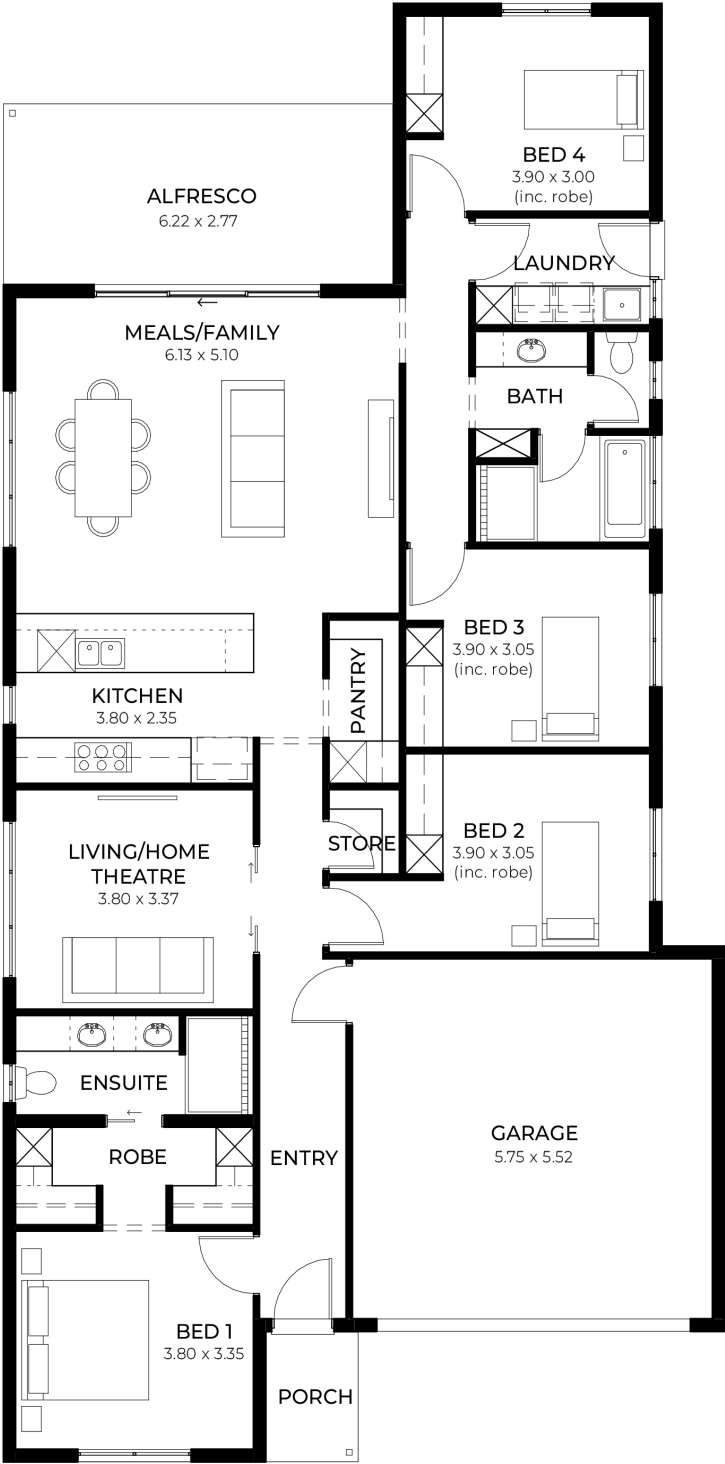
from  
\$763,440\*

LOT 3052  
Mirino Loop  
Angle Vale  
'Teal 3.5'

Lot Size 400.00m<sup>2</sup>  
Design Teal 3.5  
Block Size 400m<sup>2</sup>  
House Size 221m<sup>2</sup> / 23.82sqgs  
Width 11.50m



4 2 2 2





**Lucky you,  
all these  
impressive  
features are  
included with  
this home**

Genuine **FIXED PRICE** for 12 Months from contract signing

Transparent, comprehensive, and unlike anything you will see elsewhere

No surprises, no guesswork, just a streamlined, stress-free building experience

Exceptional house and land package, thoughtfully designed to enhance your living experience

Choice of premium facades

Option to upgrade to Aspire Inclusions

Hebel AAC dwelling with enhanced energy efficiency

Premium roofing with Colorbond materials and 6.6kW Solar

Comprehensive insulation for superior climate control

Gourmet kitchen with top-tier appliances, solid surface benchtops and soft-close cabinetry

Luxury bathroom and laundry with elegant fittings and storage solutions

Thoughtful interior finishes, high ceilings and 2340mm tall

Advanced electrical features including ring doorbell and Wi-Fi controlled air conditioning

Turnkey inclusions with perimeter and driveway paving, stormwater and termite protection

Footings and site works included Price valid for 14 days