

House and Land

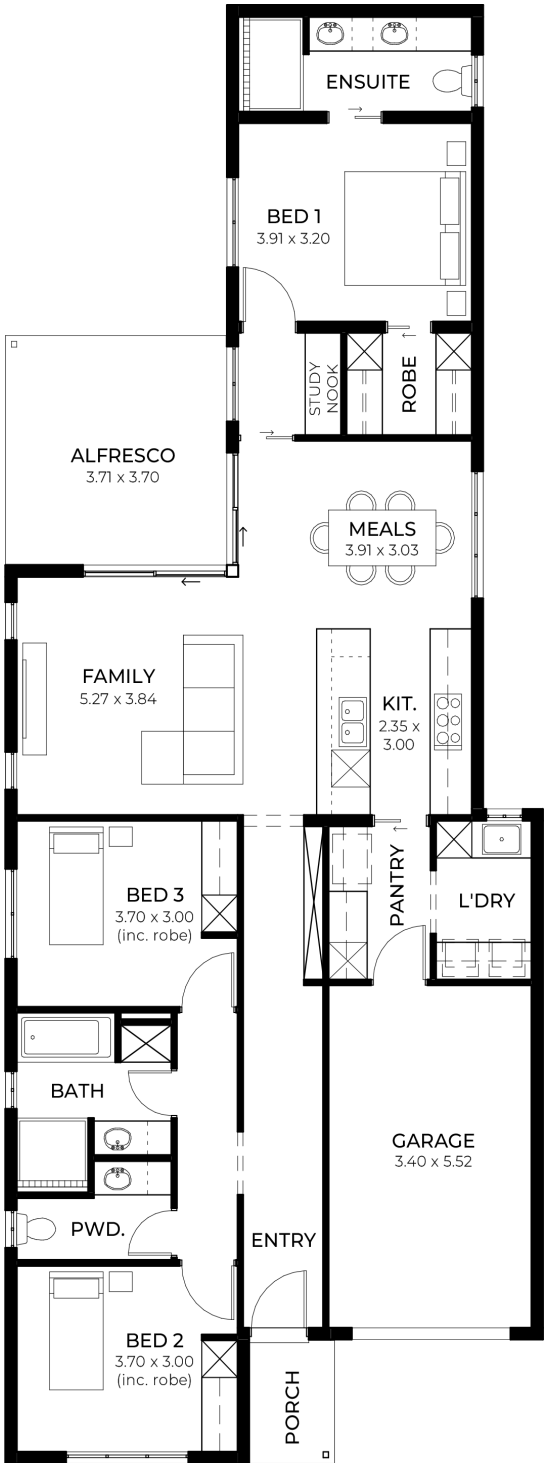
from
\$591,340*

LOT 7690
Darlington Drive
Munno Para
'Sage 3.5'

Lot Size 300.00m²
Design Sage 3.5
Block Size 300m²
House Size 171m² / 18.50sq
Width 9.00m



3 1 2 1





**Lucky you,
all these
impressive
features are
included with
this home**

Fixed Price Inclusions Package!

**PRE APPROVAL REQUIRED TO
SECURE THIS PACKAGE**

Experience luxury, comfort, and efficiency with our premium inclusions, all part of your new home-at a fixed price

Energy & Climate Efficiency

6.6kW Solar Power System - Eco-friendly and energy-efficient as standard

Ducted Reverse Cycle Air Conditioning - Complete home climate control with Wi-Fi connectivity

Stylish Interior Finishes

Lifestyle Carpet - Plush carpeting to all bedrooms, study, and theatre.

Timber Laminate Flooring - Sleek and durable finishes to entry, rear hallway, kitchen, meals, and family areas

High Ceilings (2700mm) - Enhancing space and luxury throughout the home.

Comfort & Insulation

Comprehensive Insulation Package - R6.0 to ceilings, R2.5 to external walls, R2.0 to internal walls and garage for year-round comfort

Gourmet Kitchen

Premium 900mm Westinghouse Appliances - Including oven, cooktop, rangehood, and dishwasher

20mm Solid Surface Benchtops - Sleek and durable surfaces in kitchen and pantry

Designer Bathrooms

Luxury Inclusions - Featuring square-edge benchtops, semi-framed shower screens, and Luna tapware and accessories

Built-in Storage Solutions

Ample Storage Throughout - Including walk-in robes, mirrored sliding robes, linen cupboards, pantry, and dedicated laundry storage

Outdoor Living Enhancements

Entertainerâ€™s Alfresco - Includes slab, tiling, gas point, and stormwater system for seamless outdoor enjoyment

Compliance Included

Encumbrance Requirements - All applicable encumbrance criteria included for hassle-free approvals

Rohit Khanna0413 748 350

rohitk@sahousingcentre.com.au **sahousingcentre.com.au**

* Terms and Condition's apply. For full details go to sahousingcentre.com.au/terms-and-conditions/