

# House and Land

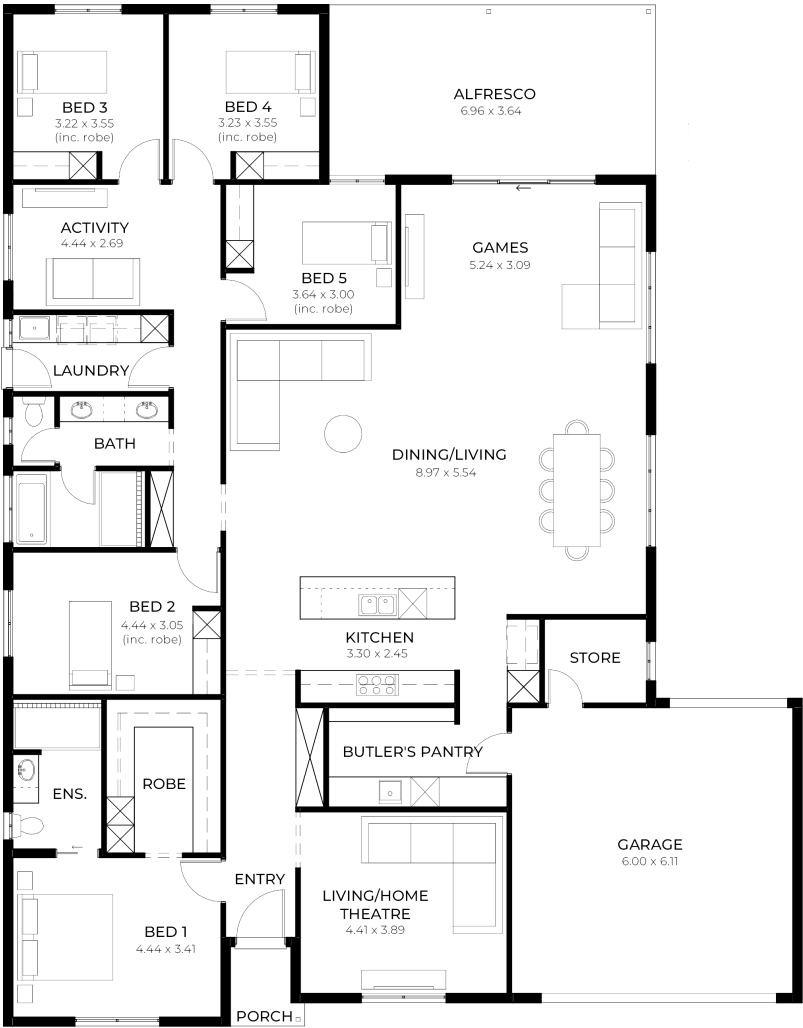
from  
\$847,340\*

LOT 34  
Montague Court  
Gawler South  
'Magenta 5.0'

Lot Size 600.00m<sup>2</sup>  
Design Magenta 5.0  
Block Size 600m<sup>2</sup>  
House Size 319m<sup>2</sup> / 34.35sq  
Width 17.00m



5 3 2 2





**Lucky you,  
all these  
impressive  
features are  
included with  
this home**

New Liveable Housing Standards with 7 star energy efficiency including 6.6 kw solar system

2.7m ceiling throughout / 25 degree roof pitch / 450mm eaves

2.3m high doors (external and Internal)

Insulation throughout including R 6.0 to Ceiling

900mm Westinghouse Appliances to kitchen

Westinghouse Dishwasher

Solid surface benchtop to kitchen and pantry

Built in robes with mirror finish, drawers and shelving set

Tiled ledge to showers with 1.95m high Milan Semi-Framed Shower Screens

45 litre inset trough to laundry with floor units and tiling behind

400mm deep Overhead cupboards to Kitchen and Laundry

Auto single span panel to garage

12 months fixed price including footings and site works

Premium Facade as selected or your choice, including slab and tiles

Slab and Tiles to Alfresco as per plan

Flooring included (Carpets to rooms / Timber laminate to living, kitchen)

Ducted reverse cycle air-conditioning with WIFI control

Fast pre-construction process

3 Month Maintenance

25 Year Structural Guarantee