

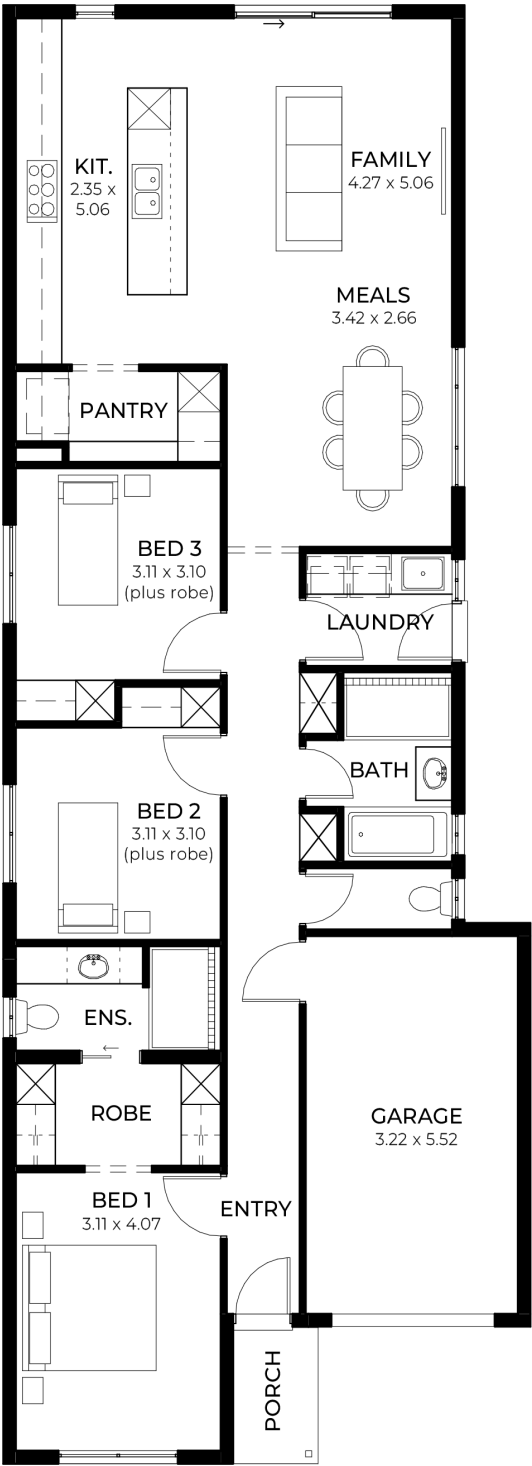
House
and Land
from
\$609,940*

LOT 136
New Road
Mount Barker
'Ivory 3.5'

Lot Size 270.00m²
Design Ivory 3.5
Block Size 270m²
House Size 150m² / 16.21sq
Width 8.00m



3 1 2 1





**Lucky you,
all these
impressive
features are
included with
this home**

Lifestyle

Fixed Price Inclusions Package!

Experience luxury, comfort, and efficiency with our premium inclusions, all part of your new home, at a fixed price

Energy & Climate Efficiency

6.6kW Solar Power System - Eco-friendly and energy-efficient as standard

Ducted Reverse Cycle Air Conditioning - Complete home climate control with Wi-Fi connectivity

Stylish Interior Finishes

Lifestyle Carpet - Plush carpeting to all bedrooms, study, and theatre

Timber Laminate Flooring - Sleek and durable finishes to entry, rear hallway, kitchen, meals, and family areas

High Ceilings (2700mm) - Enhancing space and luxury throughout the home

Comfort & Insulation

Comprehensive Insulation Package - R6.0 to ceilings, R2.5 to external walls, R2.0 to internal walls and garage for year-round comfort

Gourmet Kitchen

Premium 900mm Westinghouse Appliances - Including oven, cooktop, rangehood, and dishwasher

20mm Solid Surface Benchtops - Sleek and durable surfaces in kitchen and pantry

Designer Bathrooms

Luxury Inclusions