

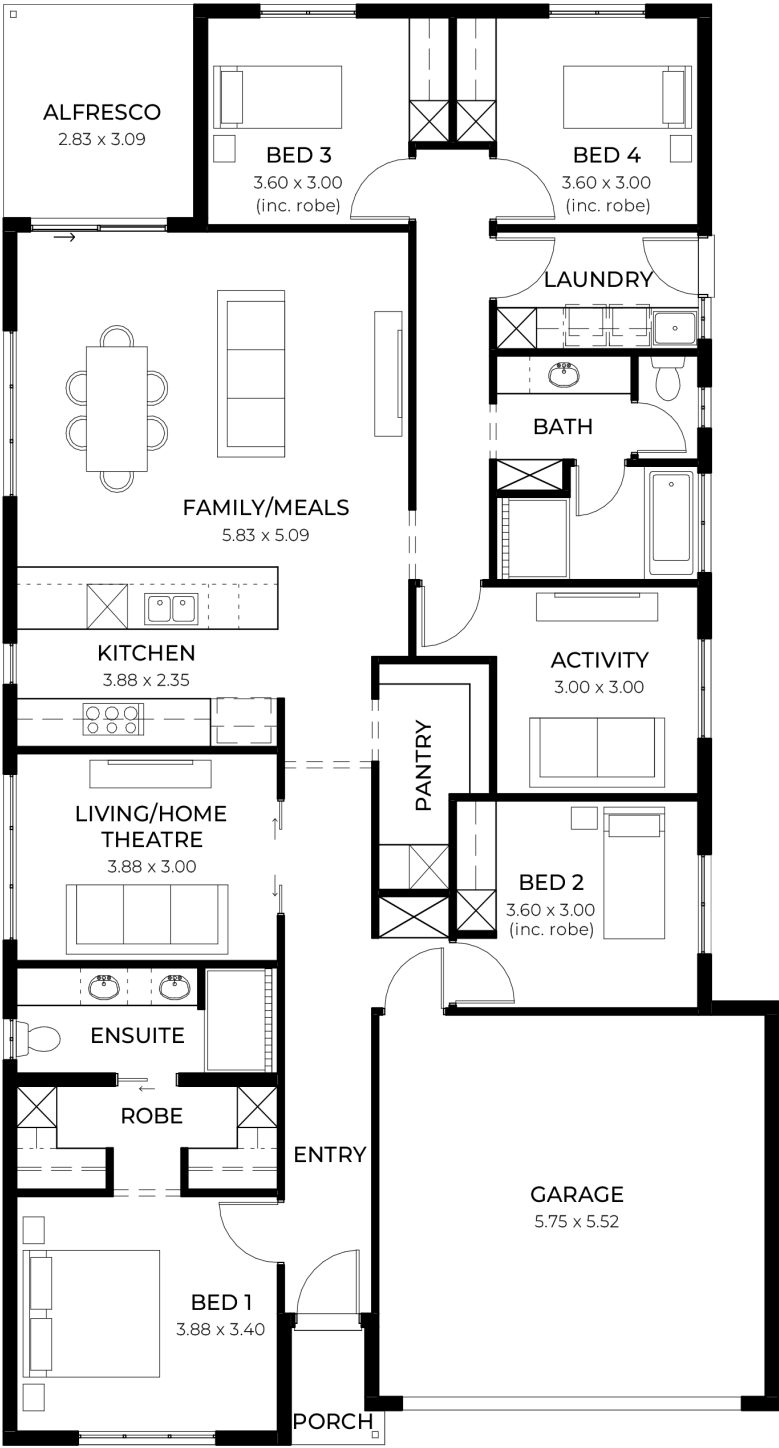
House
and Land
from
\$731,305*

LOT 31
Montague Circuit
Gawler South
'Burgundy 5.0'

Lot Size 463.00m²
Design Burgundy 5.0
Block Size 463m²
House Size 221m² / 23.87sq
Width 11.50m



4 3 2 2





**Lucky you,
all these
impressive
features are
included with
this home**

Fixed Price Package with 30 week
build time guarantee

Footing price and encumbrance
requirements included

2700mm high ceilings throughout

6.6kW solar system for energy savings

Ducted reverse-cycle air conditioning
with Wi-Fi control

Colorbond roof with 25 degree pitch

Kitchen with 900mm appliances, solid
benchtops, and soft-close drawers

Timber-look flooring to living areas
and carpet to bedrooms and theatre

R6.0 ceiling insulation, plus insulation
to walls, garage, and alfresco

Panel lift garage door with remote,
rear roller door, and lighting

Tiled verandah, alfresco, and porch

Bathrooms with semi-frameless
showers, tiled niches, and premium
fittings

Solid surface benchtops in kitchen and
pantry

2340mm internal doors and cavity
sliding doors

Awning windows with flyscreens, to
key areas

Built-in robes with mirrors; walk-in
robe with shelving and drawers

Laundry with overhead cupboards,
pull-out bin, and broom storage

Vanities with soft-close drawers and
recessed kickers

Clipsal Iconic light switches, TV/data
points, and power outlets throughout

Outdoor features including gas BBQ
point, garden taps, termite barrier

3-month maintenance period +25-year
structural warranty

Driveway, perimeter path and
Stormwater included

We can help you with finance,
including monthly repayments and
pre-approval.