

House and Land

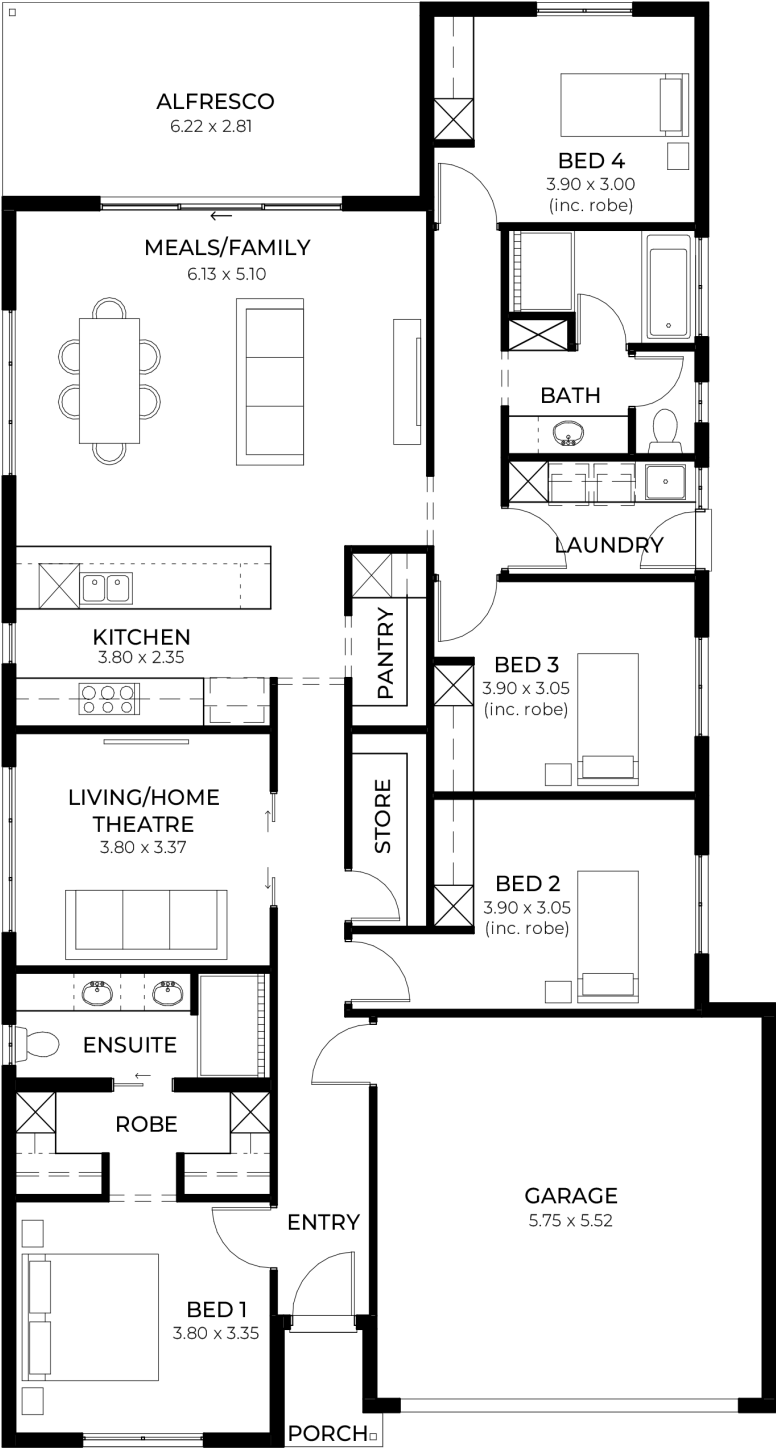
from \$791,300*

LOT 517
Matthew Road
Angle Vale
'Teal 5.0'

Lot Size 413.00m²
Design Teal 5.0
Block Size 413m²
House Size 222m² / 23.93sq
Width 11.50m



4 2 2 2





**Lucky you,
all these
impressive
features are
included with
this home**

Secure your future home now - no surprises, just smooth sailing.

Land titling late 2025 - plan ahead with confidence

30-week build time guarantee - fast, reliable turnaround

18-month fixed price - lock in today's price for peace of mind

Premium Inclusions

Ducted reverse-cycle air conditioning with Wi-Fi control

6.6kW solar system - reduce your energy bills from day one

2700mm high ceilings throughout - create a spacious, airy feel

Driveway, perimeter path & stormwater system included

7 Star Energy Complaint

900mm stainless steel appliances + solid surface benchtops

Soft-close joinery throughout

Butler's pantry with solid surface benchtops

Semi-frameless shower screens, tiled ledges & premium tapware

Recessed kickers to vanities for sleek finish

Timber-look floors to living areas; plush carpet to bedrooms & theatre

2340mm high internal doors + cavity sliders

Built-in robes with mirrored doors; WIR with shelving and drawers

Awning windows to living areas

Clipsal Iconic switches and ample Double Power points, TV & data points

Overhead cupboards, pull-out bin, broom storage in laundry

Panel lift garage door with remote + rear roller door

Garage and alfresco insulation included

Tiled verandah, alfresco & porch (where applicable to plan)

Gas BBQ point, garden taps & termite barrier

3-month maintenance period

25-year structural warranty